



Oldfield Gardens, Ashted

Oldfield Gardens

Ashtead

Council Tax band: G

Tenure: Freehold

EPC Energy Efficiency Rating: D

EPC Environmental Impact Rating: D

- Four Bedroom Detached House
- Extended Accommodation
- Ashtead Lanes Location
- Master Bedroom with Dressing Room & Ensuite
- Four Reception Rooms
- Kitchen/Breakfast Room
- Double Garage
- No Onward Chain





Situated in a quiet cul-de-sac in the Lanes area of Ashted, this well-presented four-bedroom detached home offers generous and versatile living space, ideal for modern family life.

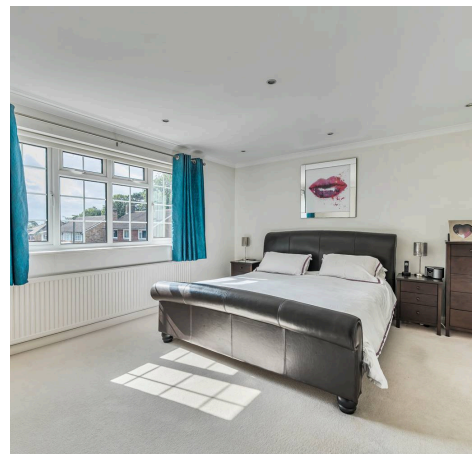
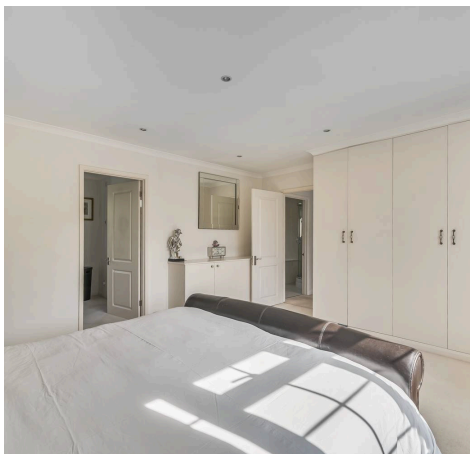
Offered to the market with no onward chain, this attractive property combines space, comfort, and location, making it an exceptional opportunity for families seeking a forever home.

The bright and welcoming entrance hall opens into a spacious lounge with double doors leading through to a dining room, and a family room – perfect for relaxed family evenings.

The well-equipped kitchen features a range of fitted units and opens into a separate breakfast area and a useful utility room. A quiet study room provides an ideal work-from-home space, and a downstairs cloakroom adds further practicality.

Upstairs boasts four double bedrooms, including an exceptional master suite complete with a dressing room and a stylish ensuite shower room. The family bathroom offers both a bathtub and a separate shower, catering to all needs.

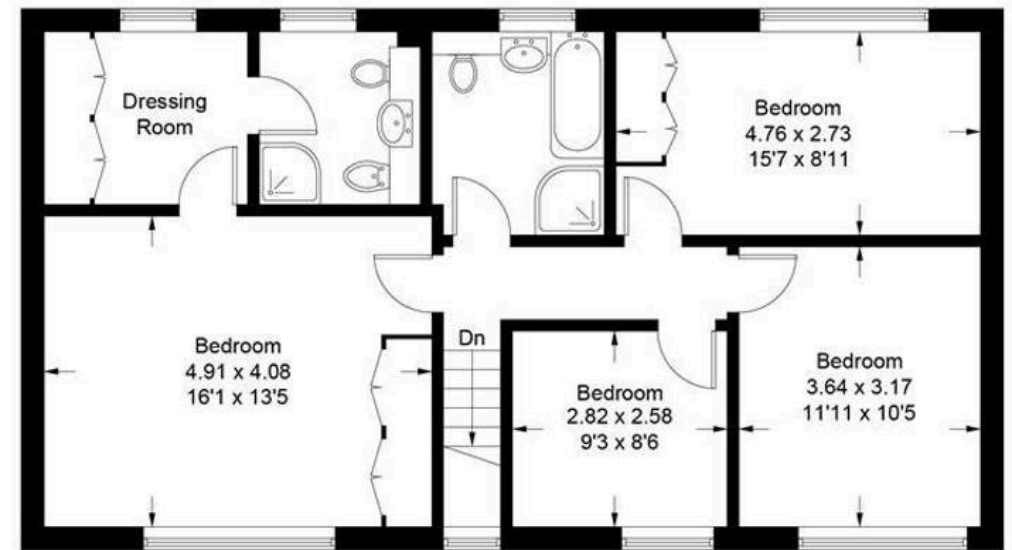
Outside, the rear garden offers a tranquil retreat with an attractive patio, a level lawn, well-stocked flower beds, and private hedged boundaries. To the front, a driveway provides ample off-street parking and leads to a double integral garage.



Approximate Gross Internal Area = 194.1 sq m / 2089 sq ft
Garage = 26.6 sq m / 286 sq ft
Total = 220.7 sq m / 2375 sq ft



Ground Floor



First Floor

This plan is for layout guidance only. Not drawn to scale unless stated. Windows and door openings are approximate. Whilst every care is taken in the preparation of this plan, please check all dimensions, shapes and compass bearings before making decisions reliant upon them. (ID1014940)

www.bagshawandhardy.com © 2023

