



## Fentiman Road, SW8

£495,000

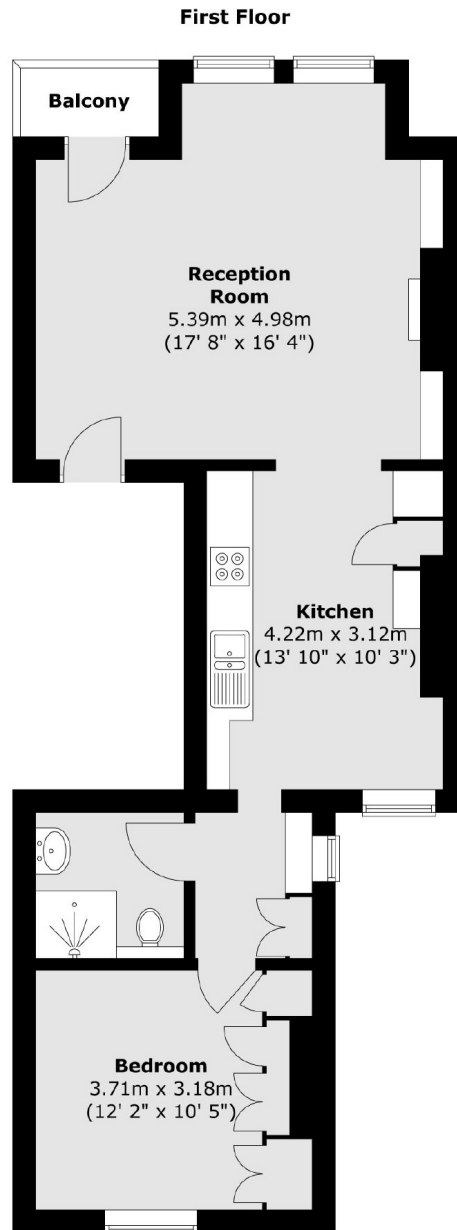
A gorgeous one bedroom first floor conversion of 621sq.ft which has been beautifully finished throughout. Full of character and charm, the property benefits from a spacious reception room with beautiful sash windows that draw in lots of natural light. Furthermore there is a balcony, a separate kitchen with space for dining, access to communal gardens and a share of the freehold.

Fentiman Road is beautiful tree lined street, within a low traffic conservation zone, perfectly positioned within walking distance of fantastic schools local amenities including the Fentiman and Canton Arms pubs, shops and cafes. There are unbeatable transport links including Nine Elms, Stockwell and Vauxhall Stations just a short walk away.

### Features

- One Bedroom
- Share of Freehold
- Excellent Condition
- First Floor
- Communal Garden
- Wonderful Location

# Fentiman Road, London, SW8



Total area (approx.) : 57.7 sq. m (621 sq. ft)  
Total balcony area (approx.) : 1.7 sq. m (18 sq. ft)