



## The Grange, SE1

### £750,000

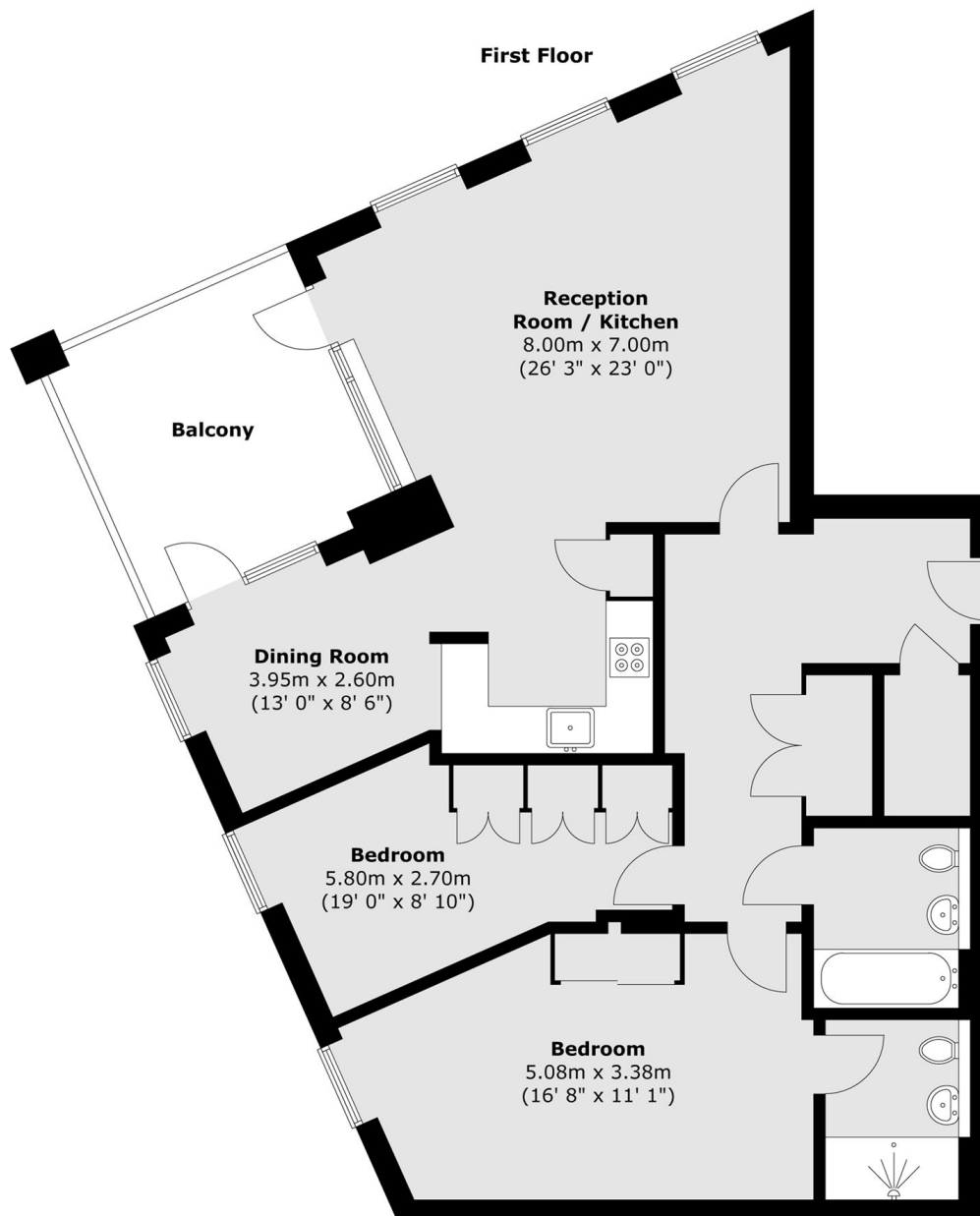
Arranged over 1,100sqft, this two double bedroom flat is in good condition and boasts two modern bathrooms, a huge open plan kitchen living space, private balcony, ample storage, secure parking space, communal gardens & concierge.

Corio House is moments from the vibrant Maltby Street Market and Bermondsey Street and is surrounded by artisan shops, cafés and delis. Bermondsey station is only 0.6 miles away and London Bridge is 0.8 miles away.

### Features

- Two Double Bedrooms
- Two Bathrooms
- Immaculate Condition
- Secure Parking with EV Charger
- Concierge Facilities
- Communal Gardens

# The Grange, London, SE1



Total area (approx.) : 103.3 sq. m (1112 sq. ft)  
Total balcony area (approx.) : 10.2 sq. m (110 sq. ft)