



Local to you - contactable when you need us

 **KMJProperty**
Your local independent Estate Agent

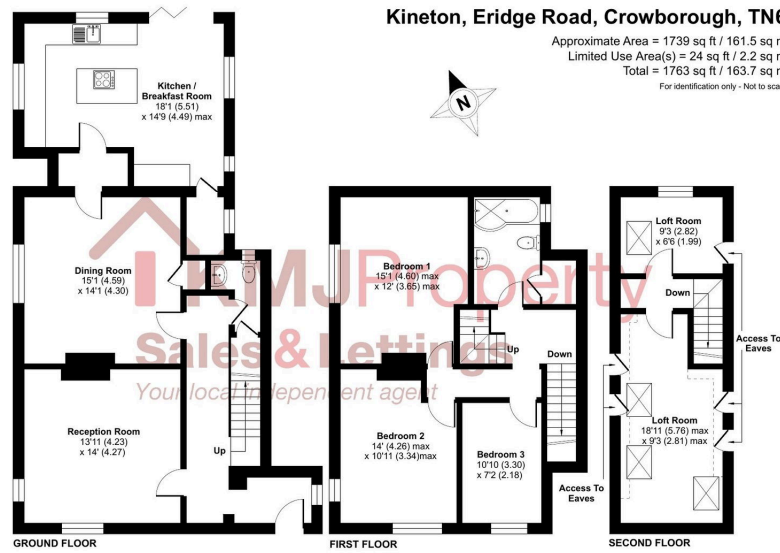
Eridge Road, Crowborough
Offers In Region Of £575,000

3 1 2



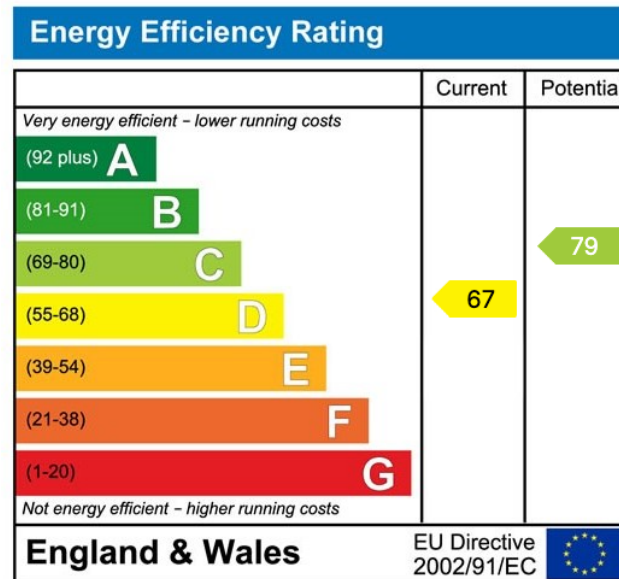
Kineton, Eridge Road, Crowborough, TN6

Approximate Area = 1739 sq ft / 161.5 sq m
 Limited Use Area(s) = 24 sq ft / 2.2 sq m
 Total = 1763 sq ft / 163.7 sq m
For identification only - Not to scale



Floor plan produced in accordance with RICS Property Measurement 2nd Edition, incorporating International Property Measurement Standards (IPMS2 Residential). © richacorn 2026. Produced for K&U Property. REF: 1421630

- Driveway
- Accommodation over 3 Floors
- Excellent storage throughout
- End of Terrace
- Beautifully presented
- Impressive outside space
- Spacious
- 4 bedrooms
- EPC- D
- Council Tax Band- D



BRITISH PROPERTY AWARDS
 2023
 ★ ★ ★ ★ ★
GOLD WINNER
 ESTATE AGENT IN CROWBOROUGH

☎ 01892 515188
 ☎ 01342 824824
 ☎ 01342 833333



FEDERATION OF INDEPENDENT AGENTS

- 📍 Tunbridge Wells
- 📍 Crowborough
- 📍 Forest Row

BRITISH PROPERTY AWARDS
 2022
 ★ ★ ★ ★ ★
GOLD WINNER
 ESTATE AGENT IN TUNBRIDGE WELLS