



KNATCHBULL ROAD, SE5

£475,000

Share of Freehold
First floor
Communal garden
Beautifully presented
Two double bedrooms
Lots of natural light

@marshandparsons
marshandparsons.co.uk

MARSH &
PARSONS



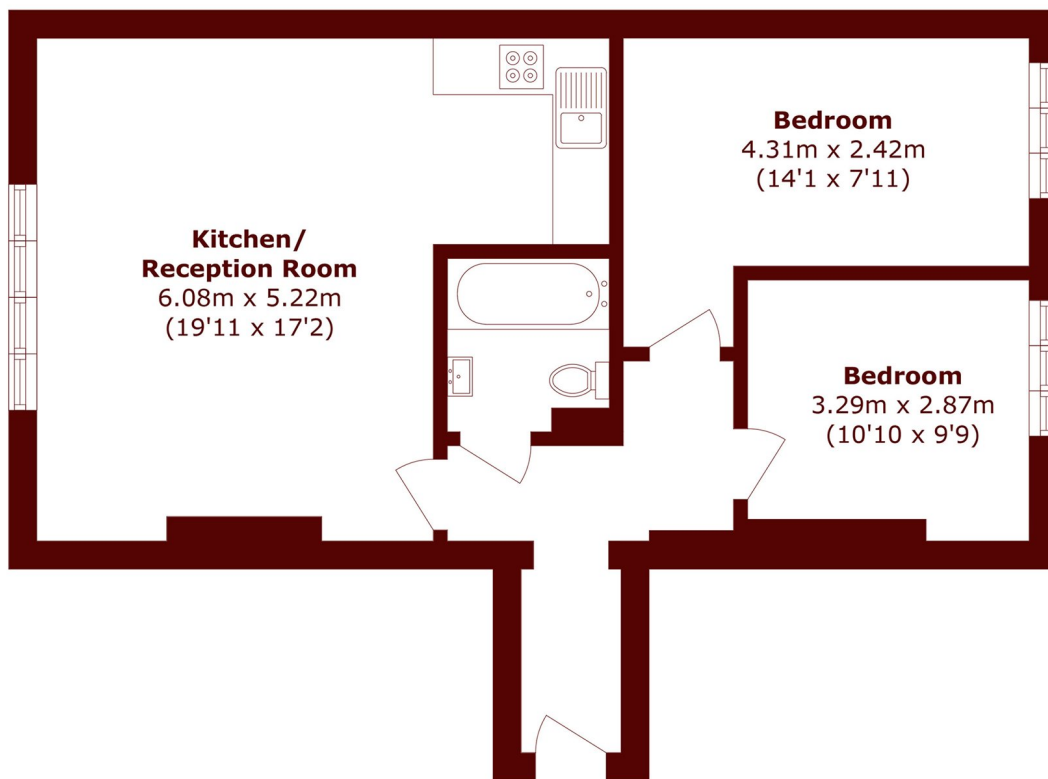
ABOUT THE PROPERTY

A stylish two bedroom, first floor apartment, offered with share of freehold and moments from Myatts Field Park. The property features a bright open-plan kitchen and reception room, two generous double bedrooms, and a modern bathroom. Beautifully presented throughout, it benefits from excellent natural light and a fresh, contemporary feel. Residents also enjoy access to a communal garden, adding valuable outdoor space.

Located near Loughborough Junction Station, with easy access to Denmark Hill, Oval, and Brixton, offering a vibrant mix of transport links, cafés, bars, and restaurants. Close to Myatts Field Park, this is an ideal first-time purchase in a popular residential pocket of South London.



STEP INSIDE KNATCHBULL ROAD



Total area (approx.): 58.6 sq. m (630.7 sq. ft)

Kennington
020 7587 1533

Energy Rating: D We aim to make our particulars both accurate and reliable. However, they are not guaranteed; nor do they form part of an offer or contract. If you require clarification on any points then please contact us, especially if you're traveling some distance to view. Please note that appliances and heating systems have not been tested and therefore no warranties can be given as to their good working order

**MARSH &
PARSONS**