



**Guide Price**  
**£375,000**

**Freehold**

3x  2x  1x 

**Mallet Avenue,  
Maidstone, Kent, ME15**

**OVER 60?**

Secure this property  
for up to **59% less!**

*Wards*  
Helping you move forwards



## Main features

- Offered chain free
- Open-plan downstairs living
- Tandem driveway with garage to the side of the property
- Across the road from a children's play area
- In close proximity to local shops, schools and amenities

## Accommodation

### GROUND FLOOR

Entrance Hall: 11'1 x 3'8 (3.38m x 1.12m)  
 Kitchen: 10'3 x 10'0 (3.13m x 3.05m)  
 Lounge/Diner: (L-shaped) 15'11 x 14'1 (4.85m x 4.30m) plus 9'8 x 3'5 (2.95m x 1.04m)  
 Cloakroom: 6'0 x 3'0 (1.83m x 0.92m)

### FIRST FLOOR

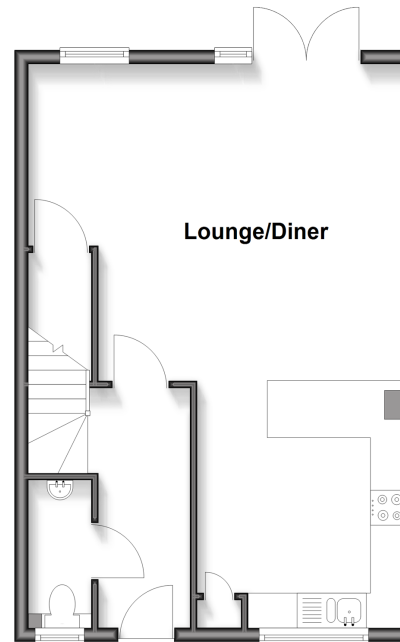
Landing: 11'4 x 3'7 (3.46m x 1.09m)  
 Bedroom 1: 10'3 x 9'10 (3.13m x 3.00m)  
 En-suite Shower Room: 7'6 x 4'4 (2.29m x 1.32m)  
 Bedroom 2: 11'9 x 8'9 (3.58m x 2.67m)  
 Bedroom 3: 8'4 x 8'4 (2.54m x 2.54m)  
 Bathroom: 6'10 x 5'7 (2.08m x 1.70m)

### OUTSIDE

Front and Rear Gardens  
 Garage  
 Tandem Driveway

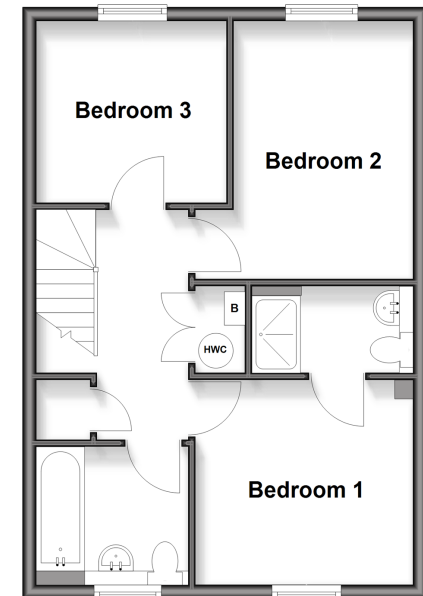
### Ground Floor

Approx. 44.0 sq. metres (473.8 sq. feet)



### First Floor

Approx. 44.0 sq. metres (473.8 sq. feet)



Call Bearsted - 01622 730955 ■ [wardsofkent.co.uk](http://wardsofkent.co.uk)

■ Legal advice should be taken to verify fixtures/fittings, planning, alterations and/or lease details  
 ■ Through a Homewise Home For Life Plan people aged 60+ can secure this property for up to 59% less, by purchasing a Lifetime Lease

■ Appliances & services are untested, dimensions are approximate and floor plans are not to scale



12329423/20260314/SG/LNR