



Hevelius Close | | Greenwich | SE10 0HR

£2,700 Per Month

## Key features

- 3 Bedroom Terraced House to Rent SE10
- Maze Hill Rail Station - 10 Minutes walk
- Greenwich Station - 20 mins walk

## Description

### 3-BEDROOM TERRACED HOUSE TO RENT – LONDON

We are proud to present this delightful 3-bedroom, 1-bathroom terraced house, ideally located in a popular and well-connected area of London. The property offers comfortable, flexible living with available parking and private garden access, making it ideal for families or professional sharers.

The property is within walking distance of a train station, hospital, supermarket, and a variety of local shops, making it ideal for families and professionals alike.

#### PROPERTY FEATURES

- 3 bedrooms
- 1 bathroom
- Terraced house
- Garden access
- Available parking
- Furnished or unfurnished (tenant's choice)

#### LOCATION HIGHLIGHTS

- Maze Hill Rail Station – approx. 10 minutes walk
- Greenwich Station – approx. 20 minutes walk
- The Blackheath Hospital – approx. 25 minutes walk
- Nearest local shop – approx. 5 minutes walk
- Nearest supermarket – approx. 10 minutes walk
- Quiet residential setting with great transport links

#### BILLS

- Excluded

EPC Rating: C  
Council Tax Band: C

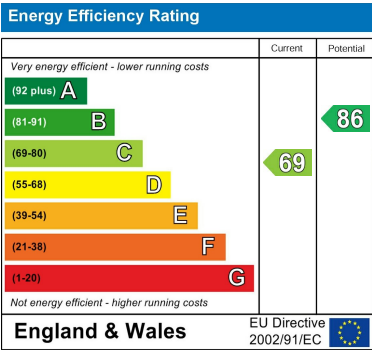
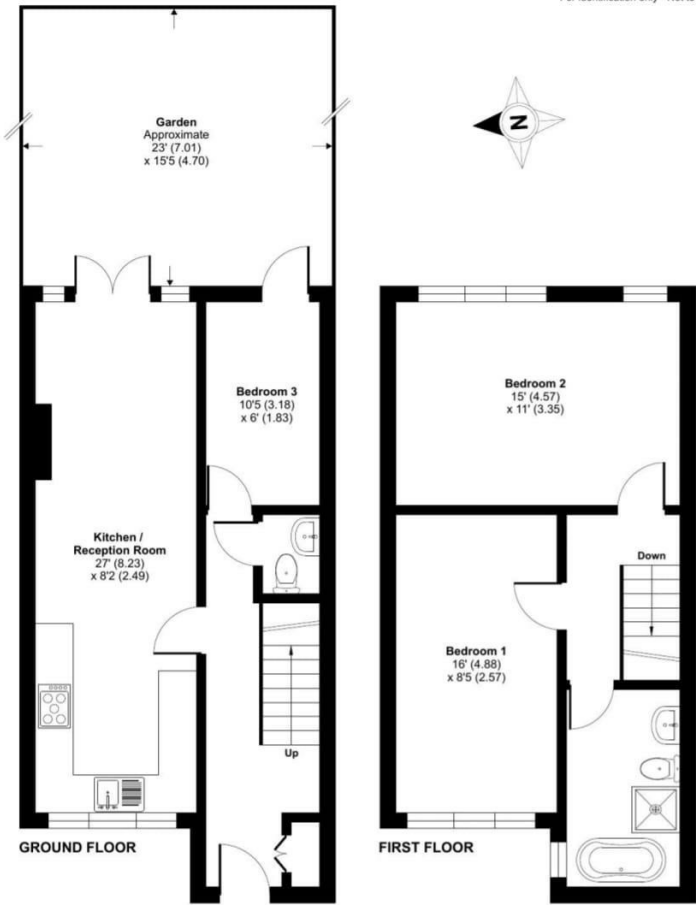
## Directions





Hevelius Close, London, SE10

Approximate Area = 857 sq ft / 79.6 sq m  
For identification only - Not to scale



Council Tax Band C    EPC Rating C



68 South Hill Avenue  
Harrow  
HA2 0NH  
02081501988  
info@leafyestates.co.uk  
leafyestates.co.uk