



PETERMANS
LOCAL PROPERTY EXPERTS



Parsons Crescent Edgware £895,000 Freehold

- 5 Bedroom, 3 Bathroom, Semi-Detached Family Home
- Two Separate Reception Rooms With Interconnecting Doors
- Kitchen Breakfast Room
- Large Utility Room
- Garage
- D/S WC
- En-Suite Shower Room To Master Bedroom
- Approx. 50Ft Rear Garden
- Outbuilding (currently used as a gym)
- Off Street Parking & Electric Car Charger
- 1,730 Sq Ft

8 THE PROMENADE, EDGWAREBURY LANE, EDGWARE, MIDDLESEX HA8 7JZ
t: 020 8958 5040 e: edgware@petermans.co.uk w: www.petermans.co.uk



Petermans for themselves and for the vendors or lessors of this property for whom they act, give notice that i) these particulars are a general outline only, for the guidance or prospective purchasers or tenants, and do not constitute the whole or any part of an offer or contract. ii) Petermans cannot guarantee the accuracy of any description, dimensions, references to condition, necessary permissions for use and occupation, and other details contained herein, and prospective purchasers or tenants must not rely on them as statements of fact, and must satisfy themselves as to their accuracy. iii) no employee of Petermans has any authority to make or give any or representation or warranty or enter into any contract whatever in relation to the property. iv) rents, prices, premiums and service charge quoted in these particulars may be subject to VAT in addition, and v) Petermans will not be liable, in negligence or otherwise, for any loss arising from the use of these particulars.



We are delighted to present this 5 bedroom 3 bathroom, semi-detached, family home, ideally located on a very quiet road within the ever-popular Broadfields Estate. Conveniently situated close to highly regarded schools, local shops, parks, and places of worship.



The property comprises, two separate reception rooms with interconnecting doors, kitchen breakfast room, large utility room, integral garage and d/s WC. On the first floor there are three double bedrooms, single bedroom, bathroom and a separate shower room. On the 2nd floor the main bedrooms benefits from an en-suite shower room and fitted wardrobes. The rear garden measures approx. 50ft and there is an outbuilding, currently used as a gym. There is also off street parking to front for several cars and an electric car charger.

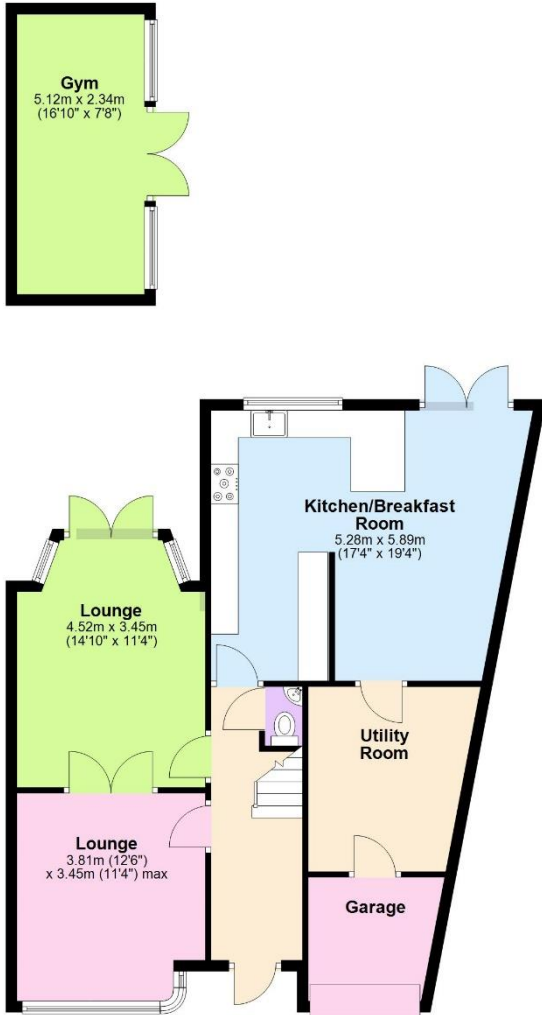






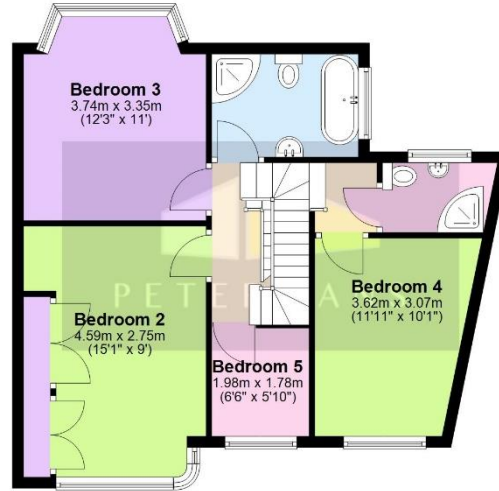
Ground Floor

Main area: approx. 79.5 sq. metres (856.0 sq. feet)
Plus outbuildings, approx. 12.0 sq. metres (128.9 sq. feet)



First Floor

Approx. 56.9 sq. metres (612.1 sq. feet)



Second Floor

Approx. 24.4 sq. metres (262.6 sq. feet)



Main area: Approx. 160.8 sq. metres (1730.7 sq. feet)
Plus outbuildings, approx. 12.0 sq. metres (128.8 sq. feet)

VIEWING STRICTLY BY APPOINTMENT ONLY.

PETERMANS TEL: 020 8958 5040 Please Note That The Gas And Electric Appliances Have Not Been Tested To Ensure That They Are In Working Order. All Measurements Are Taken With A Laser Tape Measure And Therefore Subject To Some Variation. We Recommend Any Potential Purchaser Checks These For Themselves To Confirm Their Accuracy

Price: £895,000
Tenure: Freehold
Beds: 5
Baths: 3
Reception Rooms: 3
Total Sq Ft: 1,730
Council Tax Band: Band F in Barnet
EPC Rating: D

Distance to;
Edgware Station: 1 Mile
Stanmore Station: 1.5 Miles
Mill Hill Station: 2 Miles

