



6 Broadoak Cottage, Broad Oak, Shrewsbury, SY4 3AF
£950 Per Month



6 Broadoak Cottage, Broad Oak, Shrewsbury, SY4 3AF

£950 Per Month

VIRTUAL TOUR AVAILABLE: Charming recently renovated three bedroom country cottage benefitting from a wonderful outlook and sizeable paddock to the rear. Located just outside Shrewsbury with convenient access to road networks and nearby amenities. This cottage occupies a sizeable plot which provides ample parking.

Available: 03/09/2026

Description

Comprising: Entrance vestibule, living/dining room with storage cupboard, kitchen with electric cooker and space for full height fridge/freezer and a washing machine, storage cupboard, spacious shower room. Stairs to first floor landing, two double bedrooms, further single bedroom. Paddock and orchard to rear, extensive driveway, front garden, impressive curtilage. Double glazing. Newly renovated with energy efficiency improvements and new oil fired boiler. EPC D



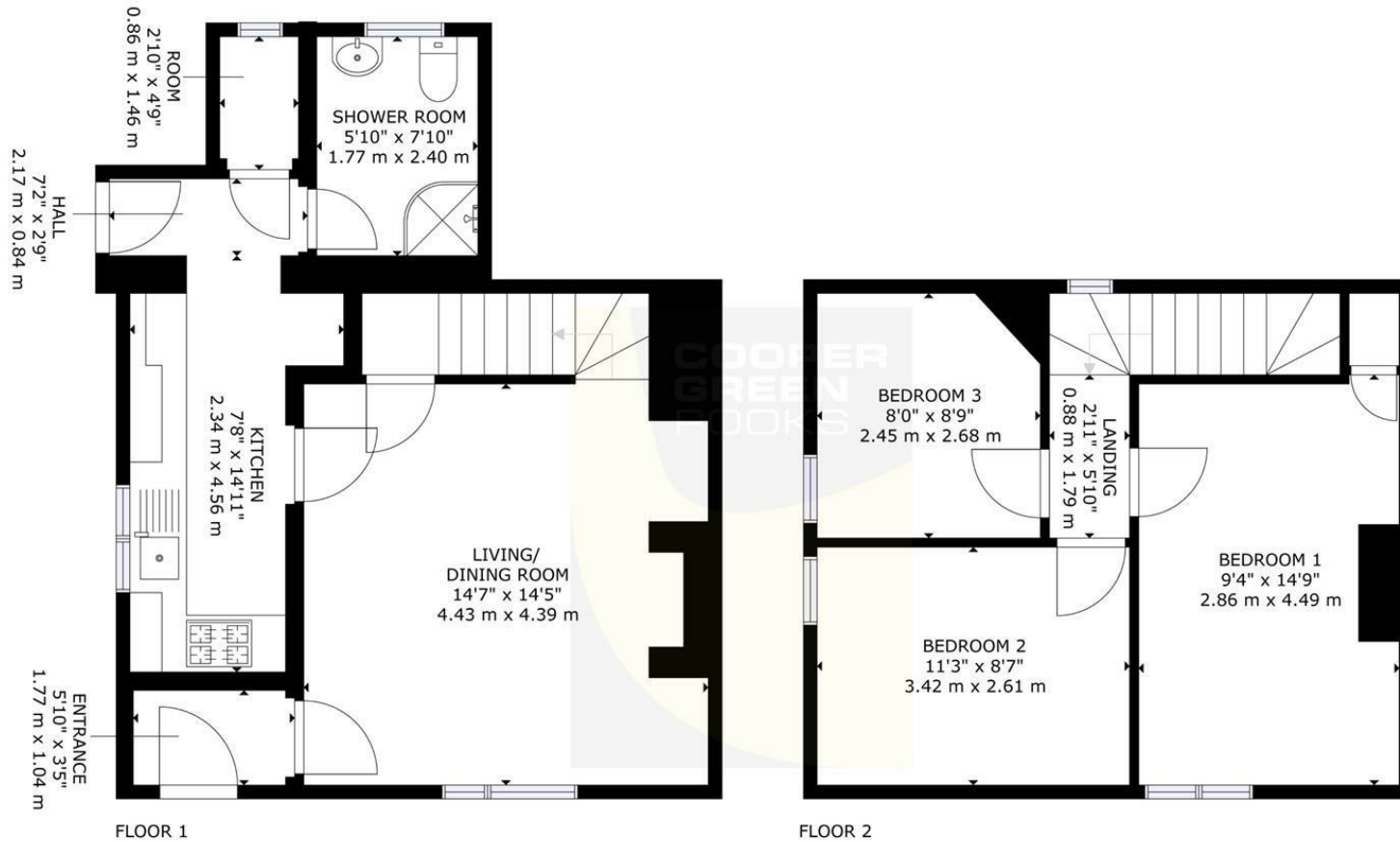
Unfurnished

Council Tax Band: C

Available: 5th September 2026

EPC: D

Floor Plans



GROSS INTERNAL AREA
FLOOR 1: 468 sq.ft, 44 m², FLOOR 2: 370 sq.ft, 34 m²
TOTAL: 838 sq.ft, 78 m²
SIZES AND DIMENSIONS ARE APPROXIMATE, ACTUAL MAY VARY.

These particulars, whilst believed to be accurate are set out as a general outline only for guidance and do not constitute any part of an offer or contract. Intending purchasers should not rely on them as statements of representation of fact, but must satisfy themselves by inspection or otherwise as to their accuracy. No person in this firm's employment has the authority to make or give any representation or warranty in respect of the property.