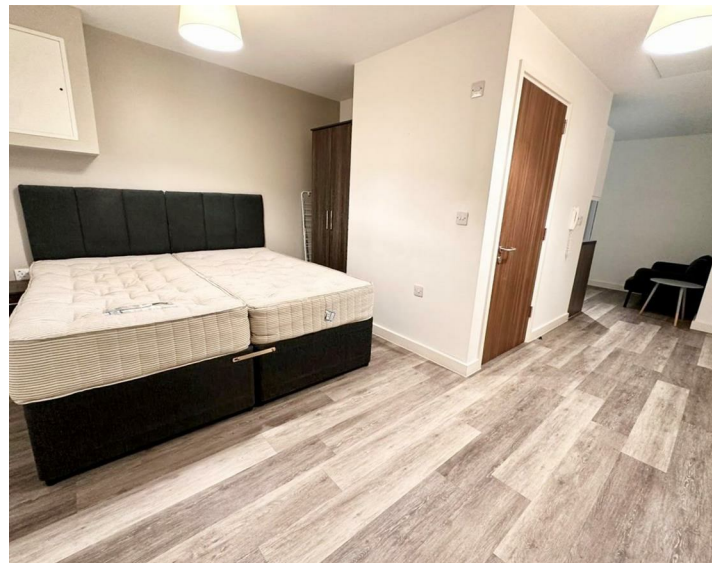


Apt 26 4 Leigh Street, Liverpool, L1 1NT  
£695 PCM

www.  
cityresidential  
.co.uk



## About the Property

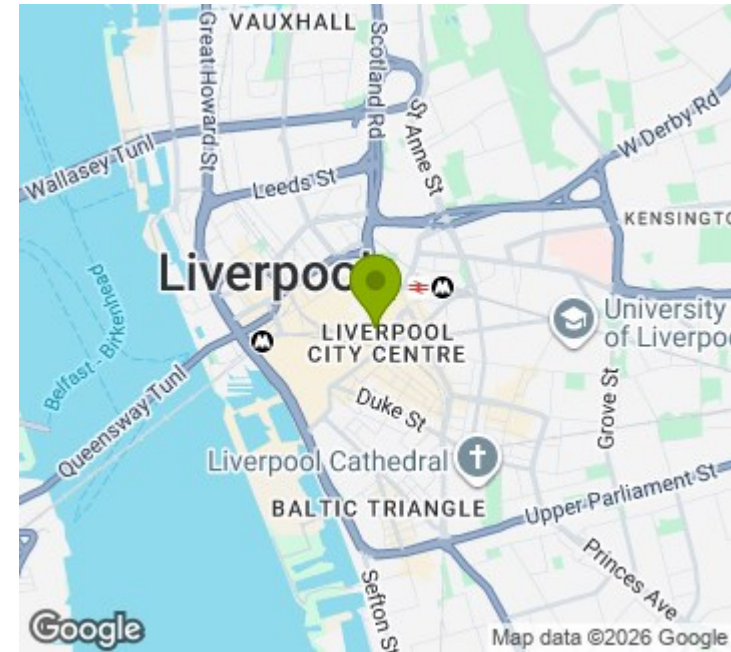
Available to Let is this well-presented studio apartment in the heart of Liverpool City Centre.

Situated on Parker Street, it is ideally located for all the amenities the city centre has to offer and is just a short walk from both Liverpool Central and Liverpool Lime Street Stations.

This development is serviced by a lift to all floors and there is no parking at this development.

EPC Rating - C. Council Tax Band - A. A deposit amount of £801 is payable upon moving in. Call us now to arrange a viewing.

- EPC Rating - C
- Council Tax Band - A
- Deposit - £801
- Immediate Move In
- No Parking
- Fully Furnished Studio Apartment
- Head lease restriction: no pets



## Energy Efficiency Rating

	Current	Potential
Very energy efficient - lower running costs		
(92 plus) <b>A</b>		
(81-91) <b>B</b>		
(69-80) <b>C</b>	<b>74</b>	<b>74</b>
(55-68) <b>D</b>		
(39-54) <b>E</b>		
(21-38) <b>F</b>		
(1-20) <b>G</b>		
Not energy efficient - higher running costs		
<b>England &amp; Wales</b>	EU Directive 2002/91/EC	



City Residential  
 81/87 Victoria Street, The Old Haymarket, Liverpool L1 6DG  
 T: 0151 231 6100 F: 0151 231 6105  
 E: sales@cityresidential.co.uk



WWW.  
**cityresidential**  
 .co.uk