



**Princes Street, Ipswich, IP1 1QU**

**welcome to**

## **Princes Street, Ipswich**

This stylish Penthouse apartment benefits from two double bedrooms, an open plan kitchen/diner/lounge, a large, wraparound terrace, with elevated views across Ipswich and one allocated parking space. NO ONWARD CHAIN!

### **Entrance Hall**

Long, sweeping entrance hall with carpet flooring, entry phone system and spotlights.

### **Kitchen/Diner/Lounge**

Large, open plan room with double glazed windows to the rear, bi-fold doors leading out to the terrace, offering stunning views across the Ipswich skyline, grey wood effect flooring throughout, one radiator, spotlights, eye and base level handle less units in high gloss grey with quartz worktop surfaces, an inset one and a half bowl sink plus drainer and chrome mixer tap, an integrated fridge/freezer, dishwasher, washing machine and oven with electric hob and extractor hood.

### **Terrace**

Wraparound terrace with a partially glass/wood balustrade, an outside light, decked flooring, elevated views across the Ipswich skyline. This terrace is partially West facing.

### **Master Bedroom**

Double glazed window to the side, carpet flooring, one radiator and a large walk-in wardrobe with exposed fitted wardrobes.

### **Bedroom Two**

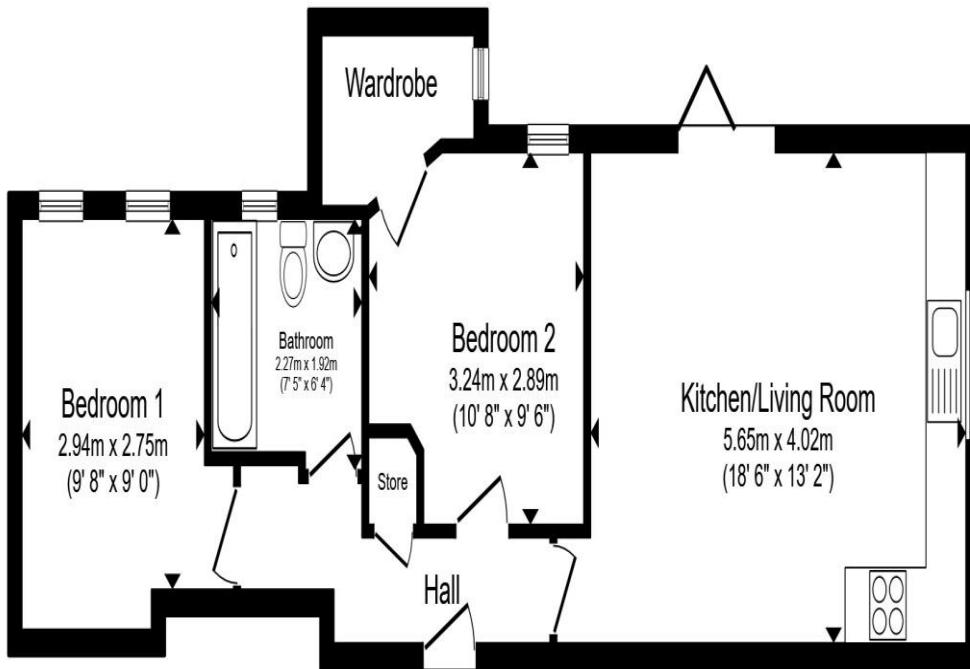
Two double glazed windows to the side, carpet flooring and one radiator.

### **Bathroom**

Double glazed window to the side, enclosed WC, vanity sink, a bath with overhead shower, waterfall showerhead and glass screen, grey wood effect flooring, chrome heated towel rail, extractor fan, spotlights, partially tiled walls and a light up, de-mist mirror.

### **Parking**

One allocated parking space in a secure, underground car park. This car park is located beneath the property, with a remote control, electric roller door.



Total floor area 53.7 m<sup>2</sup> (578 sq.ft.) approx

This floor plan is for illustrative purposes only. It is not drawn to scale. Any measurements, floor areas (including any total floor area), openings and orientation are approximate. No details are guaranteed, they cannot be relied upon for any purpose and they do not form part of any agreement. No liability is taken for any error, omission or misstatement. A party must rely upon its own inspection(s). Powered by [www.propertybox.io](http://www.propertybox.io)



**welcome to**  
**Princes Street,**  
**Ipswich**

- No onward chain
- Penthouse apartment
- Two double bedrooms
- Open plan kitchen/diner/lounge
- Master bedroom with large walk-in wardrobe

Tenure: Leasehold EPC Rating: Awaited  
Council Tax Band: B Service Charge: 1660.00  
Ground Rent: Ask Agent

This is a Leasehold property. We are awaiting further details about the Term of the lease. For further information please contact the branch. Please note additional fees could be incurred for items such as Leasehold packs.

**£220,000**



**view this property online** [williamhbrown.co.uk/Property/IPS121383](http://williamhbrown.co.uk/Property/IPS121383)



Property Ref:  
IPS121383 - 0002

1. MONEY LAUNDERING REGULATIONS Intending purchasers will be asked to produce identification documentation at a later stage and we would ask for your co-operation in order that there is no delay in agreeing the sale. 2. These particulars do not constitute part or all of an offer or contract. 3. The measurements indicated are supplied for guidance only and as such must be considered incorrect. Potential buyers are advised to recheck measurements before committing to any expense. 4. We have not tested any apparatus, equipment, fixtures or services and it is in the buyers interest to check the working condition of any appliances. 5. Where an EPC, or a Home Report (Scotland only) is held for this property, it is available for inspection at the branch by appointment. If you require a printed version of a Home Report, you will need to pay a reasonable production charge reflecting printing and other costs. 6. We are not able to offer an opinion either written or verbal on the content of these reports and this must be obtained from your legal representative. 7. Whilst we take care in preparing these reports, a buyer should ensure that his/her legal representative confirms as soon as possible all matters relating to title including the extent and boundaries of the property and other important matters before exchange of contracts.

William H Brown is a trading name of Sequence (UK) Limited which is registered in England and Wales under company number 4268443, Registered Office is Cumbria House, 16-20 Hockliffe Street, Leighton Buzzard, Bedfordshire, LU7 1GN. VAT Registration Number is 500 2481 05.



**william h brown**



**01473 226101**



[ipswich@williamhbrown.co.uk](mailto:ipswich@williamhbrown.co.uk)



16-18 Wolsey House, Princes Street, IPSWICH,  
Suffolk, IP1 1QT



**[williamhbrown.co.uk](http://williamhbrown.co.uk)**