

NOTTING HILL W11

LONSDALE ROAD



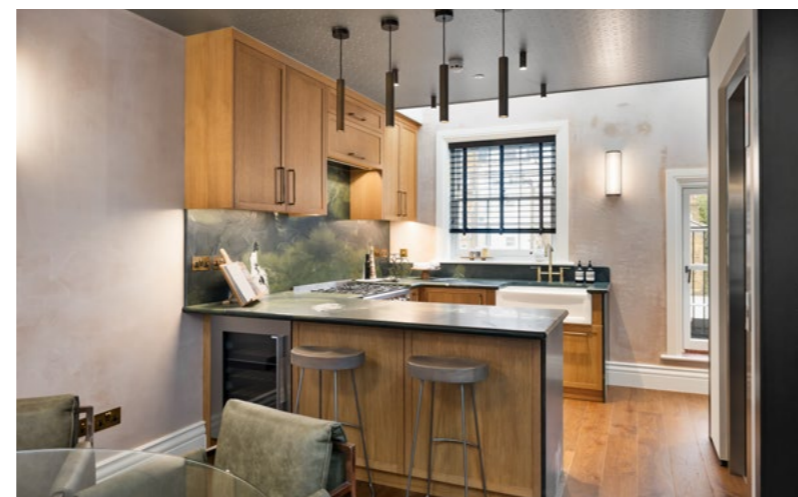
A newly re-built townhouse nestled on sought-after Lonsdale Road in the heart of Notting Hill.



This beautifully arranged five-storey townhouse offers approximately 2,453 sq ft of refined living space, thoughtfully complemented by multiple outdoor areas including two patios, a landscaped garden, and a superb roof terrace.



The home's elegant layout is enhanced by a private lift serving every floor, creating exceptional flow between the versatile lower levels—featuring a family/media room, utility space, and four well-proportioned bedrooms—and the impressive ground-floor reception room, which opens directly onto the garden. Generous ceiling heights and excellent natural light further elevate the sense of space throughout.



The upper floors provide a tranquil retreat, including an inviting study/sitting room and a spacious kitchen/dining room designed for both everyday living and entertaining.

A top-floor roof terrace crowns the property, with built-in heaters, lighting, and an outdoor kitchen, offering an idyllic open-air setting with far-reaching views.

Blending period charm with modern convenience, this outstanding Notting Hill residence is perfectly suited to contemporary family life, providing flexibility, privacy, and beautifully balanced accommodation in one of West London's most desirable neighbourhoods.

- Reception room
- Study / sitting room
- Kitchen / dining room
- Family / media room
- Principal bedroom suite with bathroom
- Bedroom suite with shower room
- Three further bedrooms
- Two further shower rooms and separate WC
- Garden
- Roof terrace
- Patio
- Lift







Guide Price
£5,400,000

Local Authority
Kensington & Chelsea

Council Tax
Band H

EPC
Rating C







Approximate Gross Internal Area
2,453 sq ft / 227.97 sq m
excluding outdoor storages

Approximate Outdoor Storages Area
47 sq ft / 4.44 sq m

Total Approximate Gross Internal Area
2,501 sq ft / 232.41 sq m

CH: Ceiling height
Floorplan for guidance only, not to scale or for valuations purposes. It must not be relied upon as a statement of fact. All measurements and areas are approximate and have been prepared in accordance with the current edition of the RICS Code of Measuring Practice.
© Alex Winship Photography

Viewing: Strictly by appointment with Savills. Important notice: Savills, their clients and any joint agents give notice that: 1: They are not authorised to make or give any representations or warranties in relation to the property either here or elsewhere, either on their own behalf or on behalf of their client or otherwise. They assume no responsibility for any statement that may be made in these particulars. These particulars do not form part of any offer or contract and must not be relied upon as statements or representations of fact. 2: Any areas, measurements or distances are approximate. The text, photographs and plans are for guidance only and are not necessarily comprehensive. It should not be assumed that the property has all necessary planning, building regulation or other consents and Savills have not tested any services, equipment or facilities. Purchasers must satisfy themselves by inspection or otherwise. 19/05/26 SAVILLS-251217C-08-JF



Elizabeth Holder
+44 77 9566 7747
+44 20 3430 6618
elizabeth.holder@knightfrank.com

Knight Frank Notting Hill
298 Westbourne Grove
London W11 2PS
knightfrank.co.uk



Archie Orr Ewing
+44 79 6490 4130
+44 20 3430 6618
aorrewing@savills.com

Savills Notting Hill
168 Westbourne Grove
London W11 2RW
savills.co.uk

