



Borough Road, TW7

£275,000

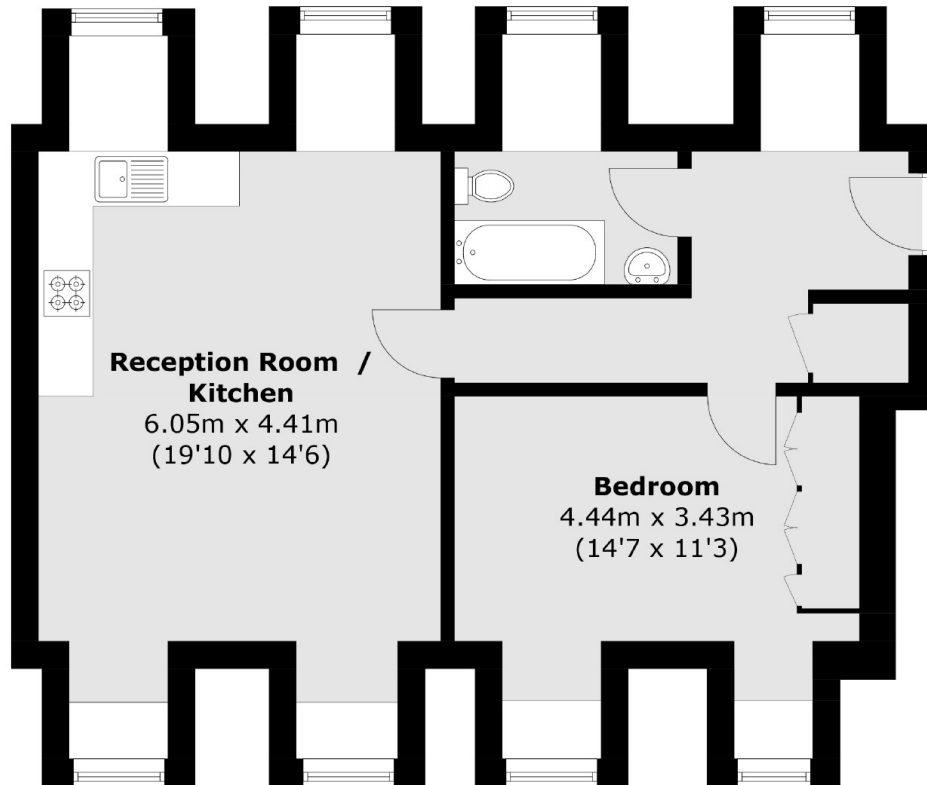
****OIEO**** A characterful one bedroom apartment situated on the third floor within a beautiful and desirable development. With over 600 sq ft of living space the property offers ample storage, generous sized rooms and high ceilings. Further benefits include allocated parking, secure entry system, lift service and offered with no onward chain.

Lancaster House is situated on Borough Road in the centre of Isleworth and provides easy access to Isleworth BR Mainline Station & Osterley Tube Station (Piccadilly Line), whilst the local shops & amenities are all within easy reach.

Features

- Lift Serviced
- No Onward Chain
- Gated Development
- Parking Included
- Period Property
- Communal Gardens

Borough Road, Isleworth, TW7



Total area (approx.): 60.8 sq. m (654.4 sq. ft)

Dexters

Isleworth
568 London Road
Isleworth
TW7 4EP
Sales
020 8560 1177

Energy Rating: C. We aim to make our particulars both accurate and reliable. However they are not guaranteed; nor do they form part of an offer or contract. If you require clarification on any points then please contact us, especially if you're traveling some distance to view. Please note that appliances and heating systems have not been tested and therefore no warranties can be given as to their good working order.

 **RICS** | Regulated
Estate Agent
and Letting Agent

dexters.co.uk