



NIKKI DAVIES

exp

@ nikki.davies@exp.uk.com

[nikkidavies.exp.uk.com](https://www.nikkidavies.exp.uk.com)

📞 0161 706 0047 / 07770 976 137

Treetops Close, Marple, Stockport, SK6

£475,000

🛏️ 4 🚿 3 🚗 3



Treetops Close comprises a handful of detached homes and townhouses, positioned off one of Marple's most sought-after residential roads. The location combines peace and privacy with excellent convenience, placing schools, countryside walks, local amenities and transport links all within easy reach.

Arranged over three floors, this versatile townhouse offers flexible accommodation ideally suited to modern family life.

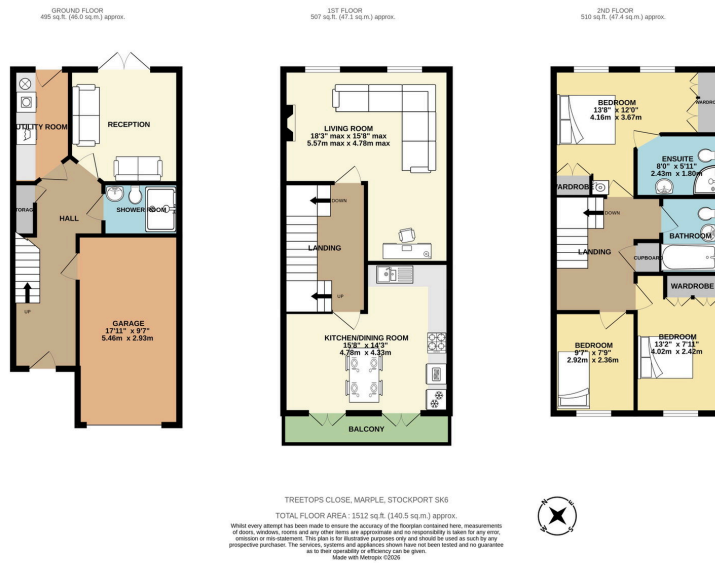
Ground Floor - a welcoming entrance hall with generous understairs storage, an integral garage, utility room and shower room/WC. A versatile fourth bedroom or snug enjoys direct access to the garden via French doors, suitable as a guest bedroom, home office, playroom or second sitting room.

First Floor - a spacious open-plan kitchen and dining room stretches across the front elevation, fitted with a range of integrated appliances and opening onto a balcony via two sets of French doors. To the rear, the generous L-shaped lounge overlooks mature woodland, providing a peaceful backdrop and ample space for both relaxing and home working.

Second Floor - the principal bedroom benefits from fitted wardrobes, an en-suite shower room and attractive woodland views. Two further well-proportioned bedrooms and a family bathroom complete the accommodation.

Externally, the wraparound gardens have been thoughtfully landscaped to create a series of distinct outdoor spaces, with paved seating areas, raised beds, mature planting and established borders. A large garden shed provides useful additional storage, whilst the westerly-facing side garden enjoys afternoon and evening sunshine. To the front, there is driveway parking leading to the integral garage, with further visitor parking available within the close. The combination of generous accommodation, flexible living space, private gardens and a highly regarded location makes this a superb family home.





- NO VENDOR CHAIN
- Exclusive cul-de-sac setting at the end of a sought-after road
- Principal bedroom with fitted wardrobes and en-suite
- Spacious L-shaped lounge with woodland outlook
- Utility room and ground floor shower room
- Private wraparound gardens with mature planting
- Four-bedroom townhouse arranged over three floors
- Superb open-plan kitchen/dining room with south west facing balcony
- Ground floor bedroom/snug with direct garden access
- Integral garage with power and lighting plus parking
- Excellent location within easy reach of schools, amenities and countryside walks

