



Blackmore Avenue, UB1 £450,000

A well presented two bedroom freehold house located within walking distance of Hanwell Elizabeth line station.

Also comprises; entrance hall, bay windowed reception room, kitchen and bathroom. Outside is a neat private rear garden.

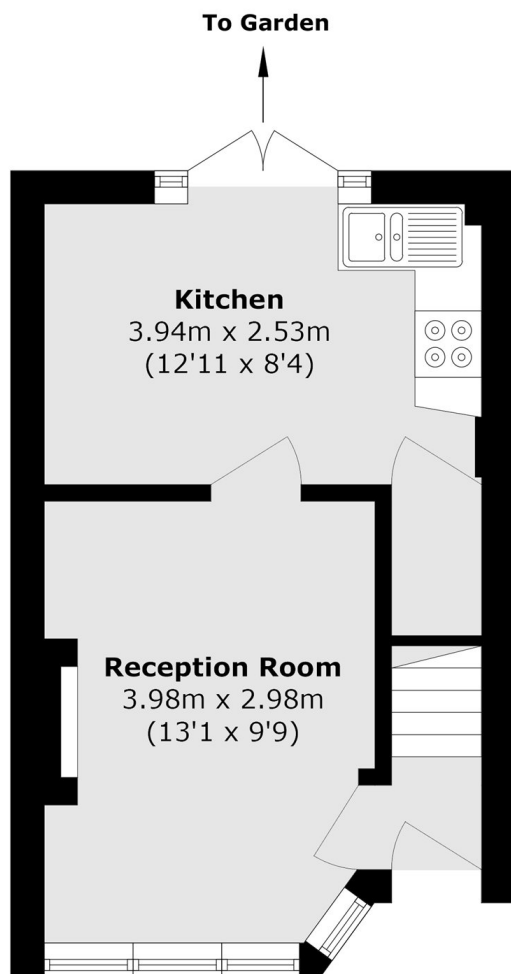
Located in this Cul de Sac adjacent to Brent Valley Park and a choice of amenities on Hanwell Broadway.

Offered with no onward chain, viewing is recommended.

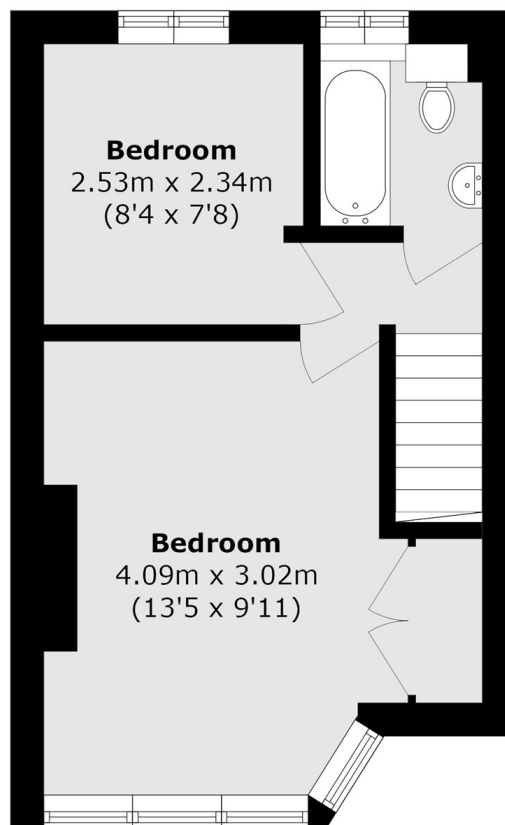
Features

- Freehold House
- Two Bedrooms
- Kitchen/Dining Room
- Cul de Sac
- Close to Elizabeth Line
- No Onward Chain

Blackmore Avenue,
Southall, UB1



Ground Floor



First Floor

Total area (approx.): 50.9 sq. m (547.8 sq. ft)