



**HUNTERS**<sup>®</sup>  
HERE TO GET *you* THERE





# Imperial Apartments, South Western House, Southampton, SO14

Guide Price £293,000



South Western House is a Grade II listed building which is situated near Southampton's historic water front, adjacent to the Old Terminus Railway Station. The building was constructed circa 1865 and was built as a hotel serving passengers travelling on the Great Ocean Liners including the Titanic.

Located on the second floor, this modern apartment comprises two double bedrooms, generously sized reception room, fitted kitchen and family bathroom. The property also benefits from a south westerly aspect, white goods, secure allocated parking, superb high character ceilings and 4 Juliet balconies.

This is a great rental investment opportunity with the property currently marketed at £1,450pcm.

## MATERIAL INFORMATION

Unexpired Years: 100 approx.

Annual Service Charges: £5,336 approx.

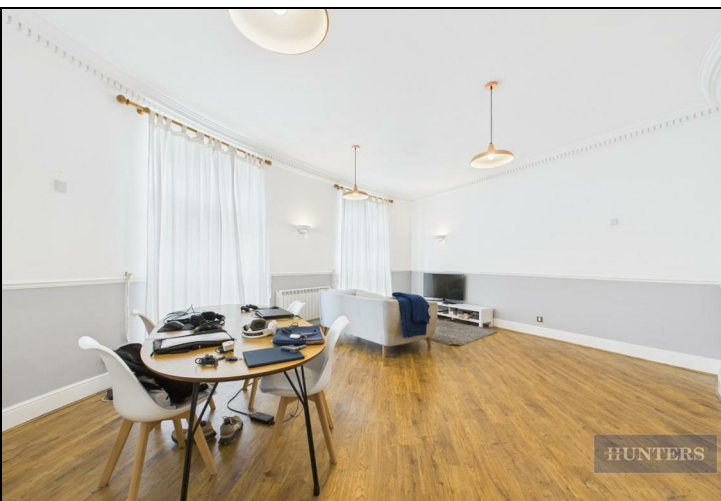
Ground Rent: Peppercorn (to be confirmed)

Council Tax Banding: E

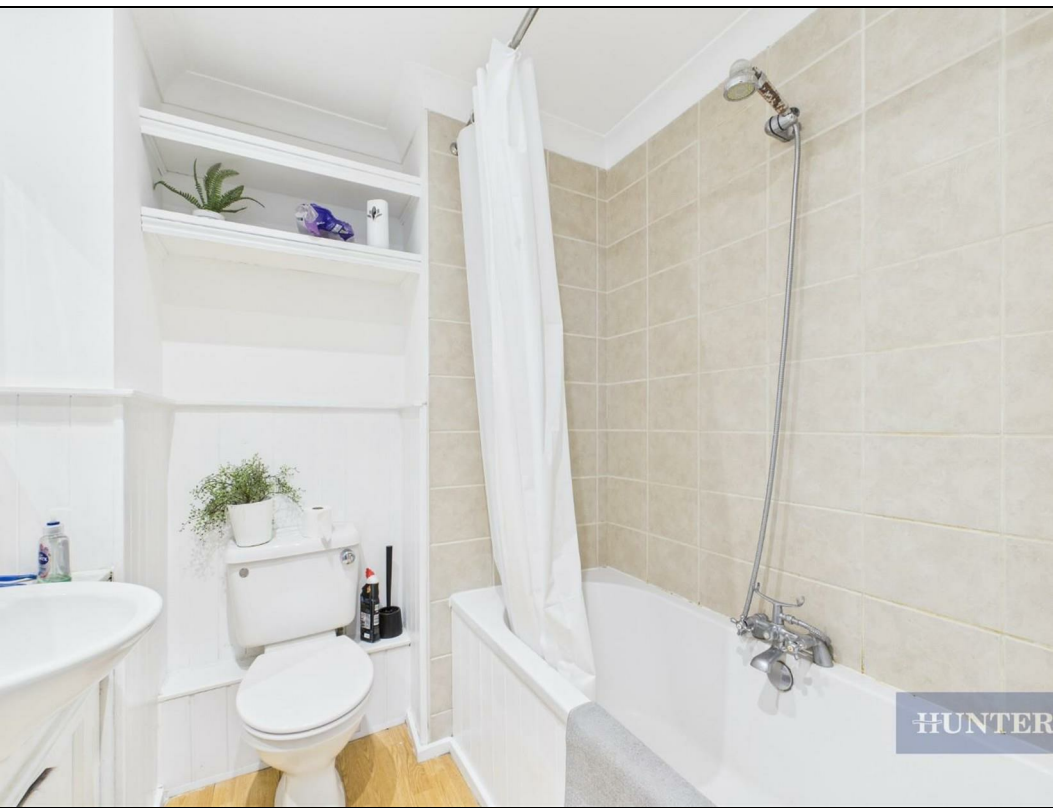


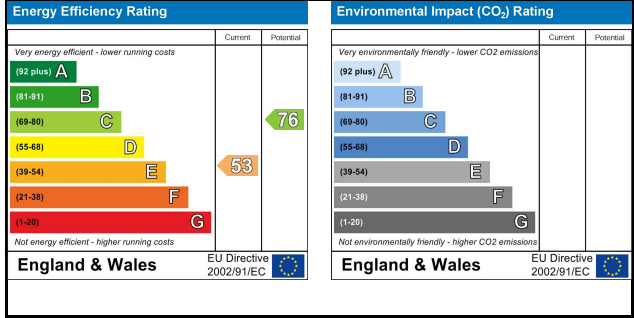
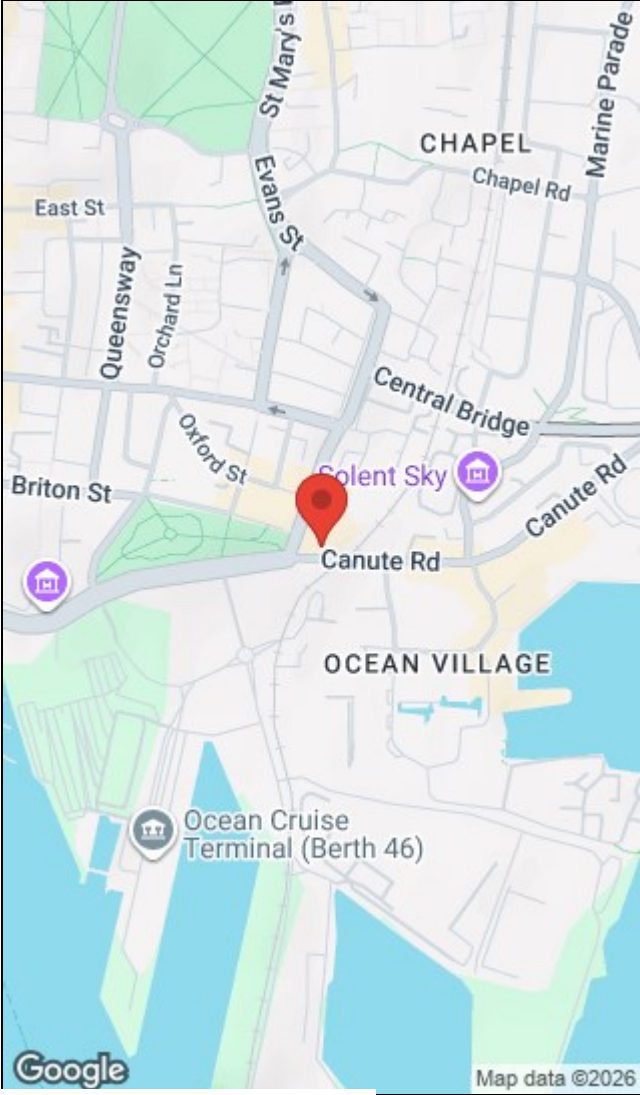
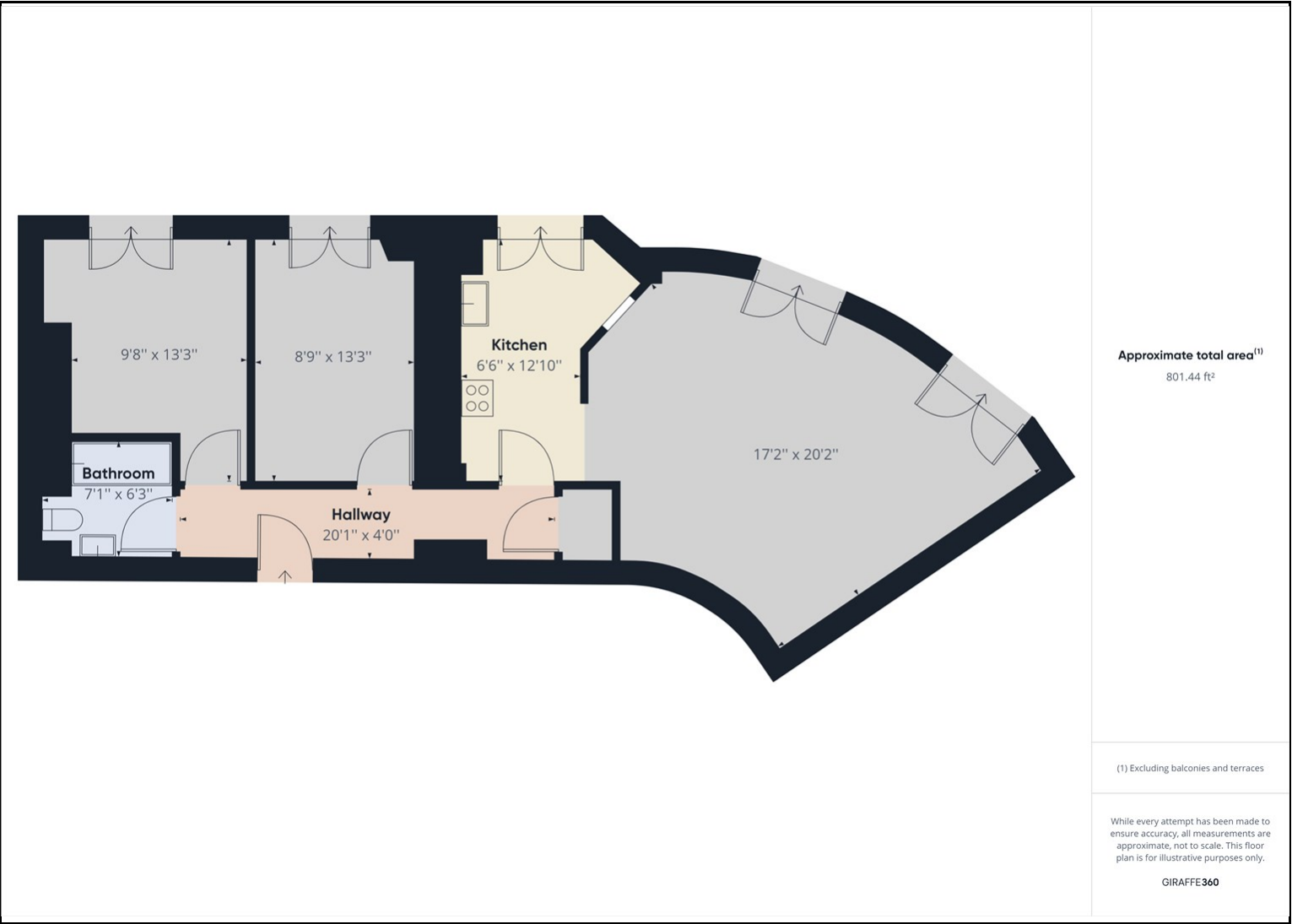
## KEY FEATURES

- Historic Grade II Listed Apartment
- Modern Two Bedroom Apartment
  - Distant Water Views
  - Superb High Ceilings
- Close to Local Amenities
  - Secure Parking
- Ample Storage Space
- Council tax band: E
  - EPC band: E
- Could achieve rental of £1500pcm









38 Bedford Place, Southampton, Hampshire, SO15 2DG | 02380 987 720  
[southampton@hunters.com](mailto:southampton@hunters.com) | [www.hunters.com](http://www.hunters.com)



This Hunters business is independently owned and operated by Clegg Properties Ltd | Registered Address 27 Westfield Road, Lymington, Hampshire, England, SO41 3PZ | Registered Number: 06421594 England and Wales | VAT No: 188 0548 76 with the written consent of Hunters Franchising Limited.