



Guide Price
£275,000

Leasehold

2x  1x  1x 

**Gossops Drive, Gossops
Green, Crawley, West
Sussex, RH11**

OVER 60?

Secure this property
for up to **59% less!**

cubitt & west
Helping you move forwards



Main features

- Purpose built ground floor maisonette
- Private enclosed rear garden
- Updated kitchen with integrated appliances
- Re fitted bathroom
- Short walk to local shops, schools and public transport including Ifield railway station

Accommodation

GROUND FLOOR

Entrance Hall

Lounge/Diner: 16'7 (5.06m) x 11'5 (3.48m) narrowing to 8'5 (2.57m)

Kitchen: 9'4 x 7'4 (2.85m x 2.24m)

Bathroom: 6'6 x 5'4 (1.98m x 1.63m)

Separate Toilet

Bedroom 1: 13'7 x 10'4 (4.14m x 3.15m)

Bedroom 2: 10'11 x 9'9 (3.33m x 2.97m)

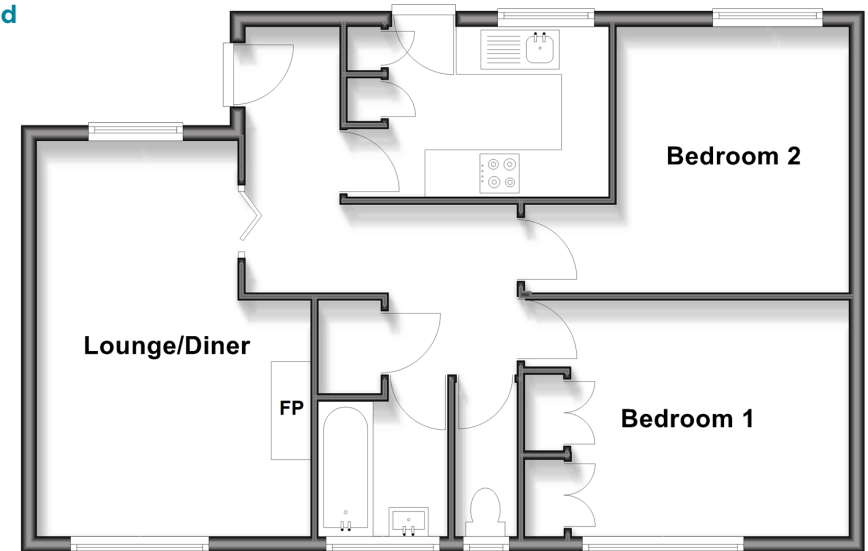
OUTSIDE

Rear Garden

Outhouse : 6'1 x 5'6 (1.86m x 1.68m)

Ground Floor

Approx. 63.6 sq. metres (684.1 sq. feet)



Call Crawley - 01293 522233 ■ cubittandwest.co.uk

- Legal advice should be taken to verify fixtures/fittings, planning, alterations and/or lease details
- Appliances & services are untested, dimensions are approximate and floor plans are not to scale
- Through a Homewise Home For Life Plan people aged 60+ can secure this property for up to 59% less, by purchasing a Lifetime Lease



20420763/20260314/SS/DC