



38, Walton Road, Hoddesdon

EN11 0LL

Offers Over £400,000



stevenoates.com



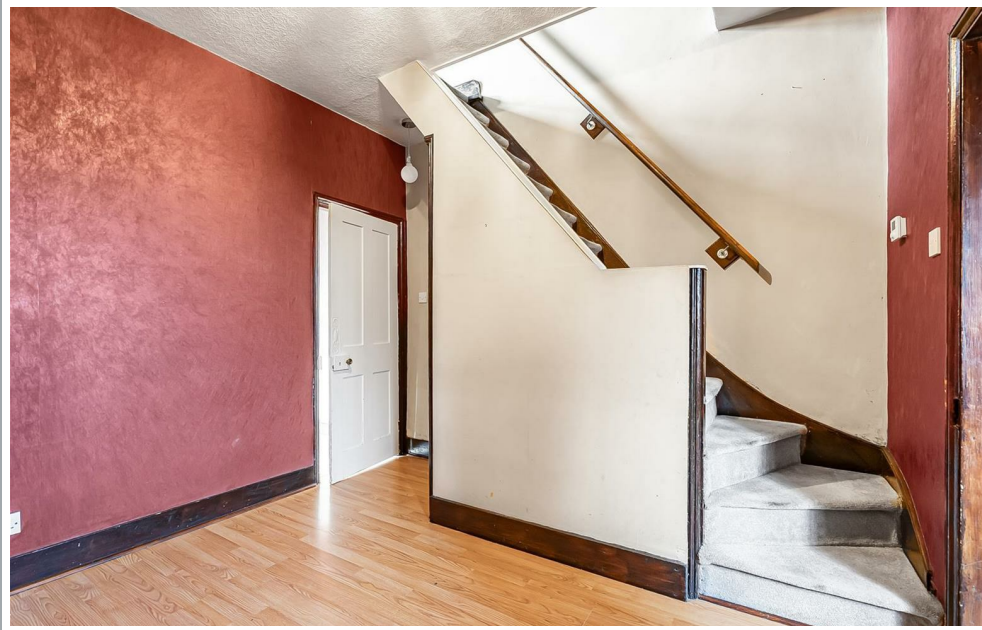
38 Walton Road, Hoddesdon, Hertfordshire, EN11 0LL

CHARACTER HOME WITH GARAGE & DRIVEWAY - An attractive 2 bedroom end of terrace Victorian house located within a popular residential road convenient for Rye House train station. The property requires some modernisation and offers 2 reception rooms and a kitchen on the ground floor, whilst on the first floor, there are 2 bedrooms and a good size bathroom. Externally, there are good size gardens, which the unusual bonus of driveway parking to the rear and also a large detached modern garage. Chain Free - Call today to view.

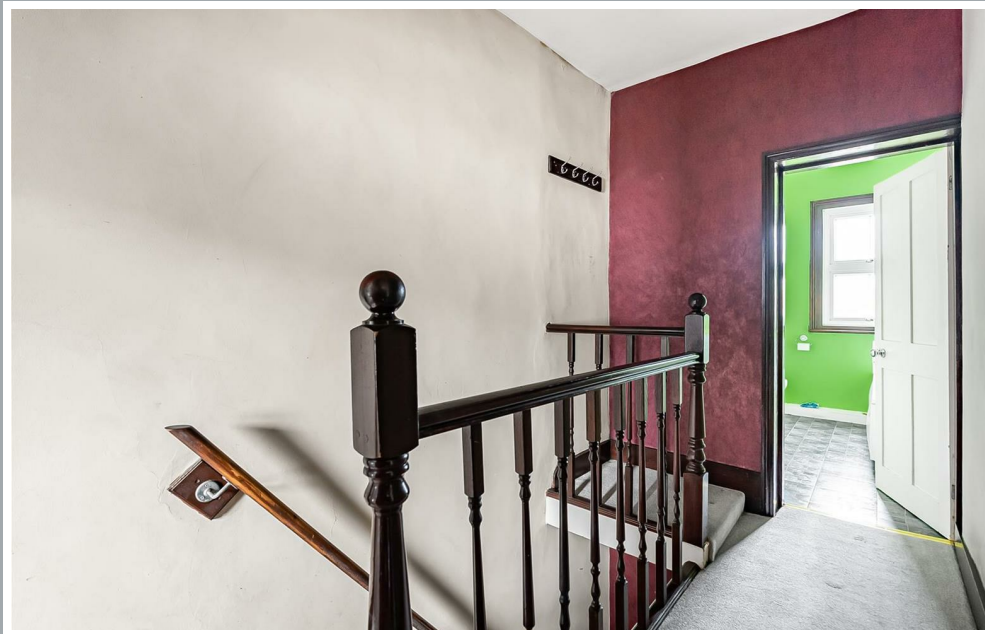
The property is located within a popular residential road offering convenient to John Warner School and Rye House mainline train station which provides fast and regular services to London's Liverpool Street. Hoddesdon Town Centre is within close distance and offers multiple supermarkets, restaurants, coffee shops and parks.



70 Fore Street, Hertford, Hertfordshire, SG14 1BY



70 Fore Street, Hertford, Hertfordshire, SG14 1BY



70 Fore Street, Hertford, Hertfordshire, SG14 1BY





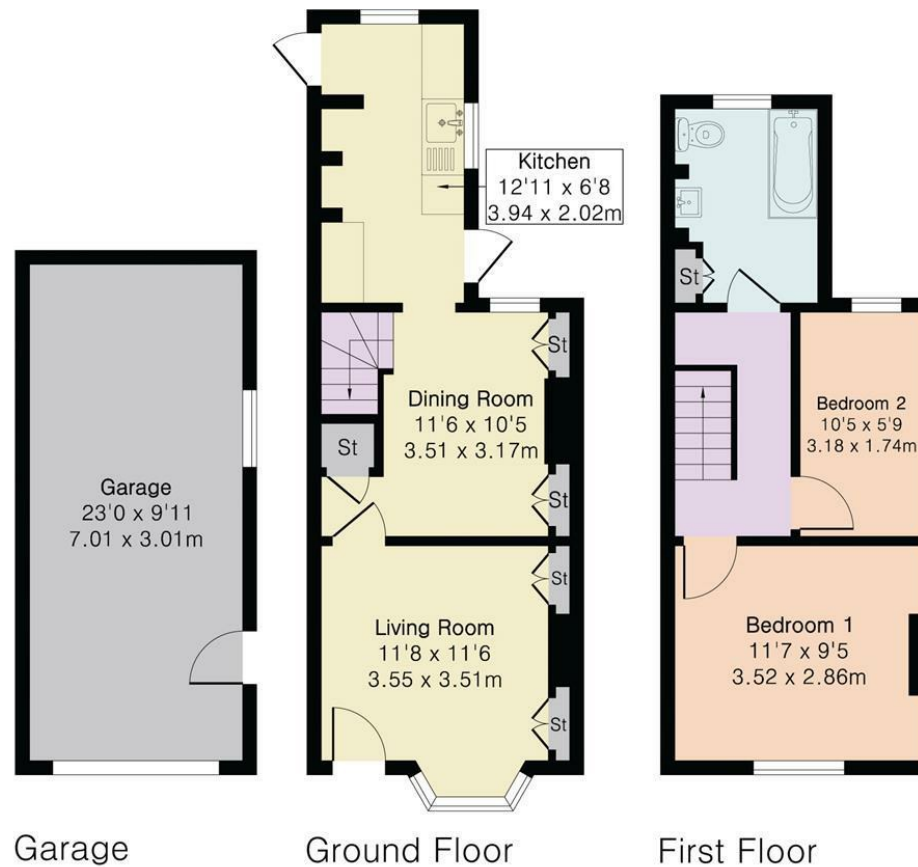
70 Fore Street, Hertford, Hertfordshire, SG14 1BY

**Approximate Gross Internal Area 637 sq ft - 59 sq m
(Excluding Garage)**

Ground Floor Area 335 sq ft – 31 sq m

First Floor Area 302 sq ft – 28 sq m

Garage Area 227 sq ft – 21 sq m



Garage

Ground Floor

First Floor

These particulars, whilst believed to be accurate are set out as a general outline only for guidance and do not constitute any part of an offer or contract. Intending purchasers should not rely on them as statements of representation of fact, but must satisfy themselves by inspection or otherwise as to their accuracy. No person in this firm's employment has the authority to make or give any representation or warranty in respect of the property.



stevenoates.com