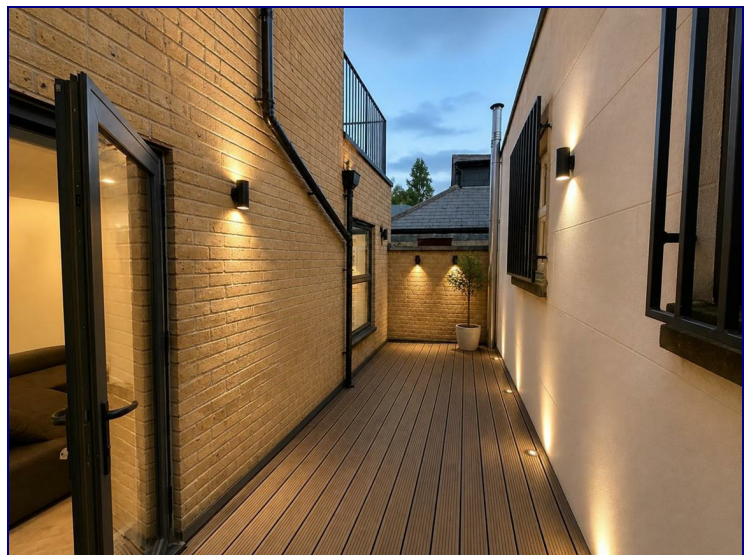
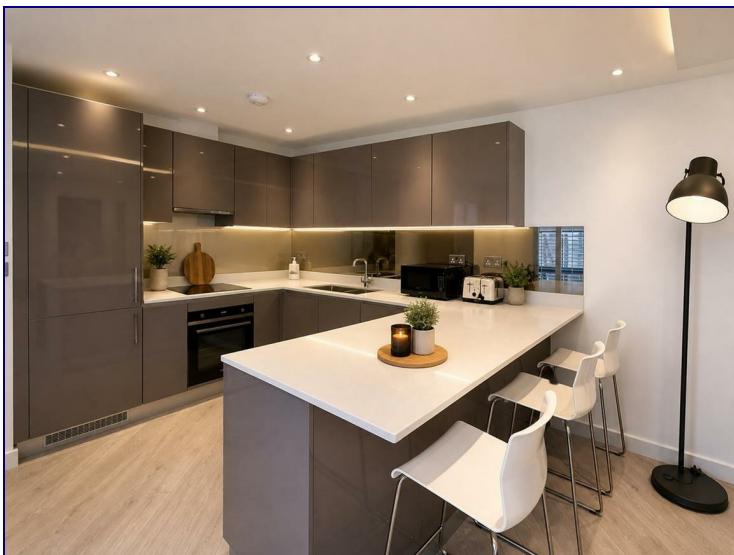




www.kings-group.net

488 Bethnal Green Road
London E2 0EA
Tel: 0207 613 2121

233 Mile End Road, London, E1 4AA



£2,100 Per Month

Arranged on the first floor, this fantastic one-bedroom flat offers generous living space throughout, complemented by stylish modern interiors and an abundance of natural light. The property boasts a well-proportioned reception room, a contemporary fitted kitchen, a spacious double bedroom, and a sleek bathroom, making it ideal for both single professionals or a couple.

Ideally located on Mile End Road, the flat benefits from immediate access to a wide selection of local amenities including vibrant bars, restaurants, cafés, and convenience stores. Excellent transport links are within easy reach, with nearby stations providing swift connections into Central London and beyond.

Residents can also enjoy close proximity to the open green spaces of Stepney Green and Mile End Park, perfect for outdoor activities and leisurely walks.



Energy Efficiency Rating		
	Current	Potential
<i>Very energy efficient - lower running costs</i>		
(92 plus) A		
(81-91) B		
(69-80) C		
(55-68) D		
(39-54) E		
(21-38) F		
(1-20) G		
<i>Not energy efficient - higher running costs</i>		
England & Wales	EU Directive 2002/91/EC	

Environmental Impact (CO ₂) Rating		
	Current	Potential
<i>Very environmentally friendly - lower CO2 emissions</i>		
(92 plus) A		
(81-91) B		
(69-80) C		
(55-68) D		
(39-54) E		
(21-38) F		
(1-20) G		
<i>Not environmentally friendly - higher CO2 emissions</i>		
England & Wales	EU Directive 2002/91/EC	

