

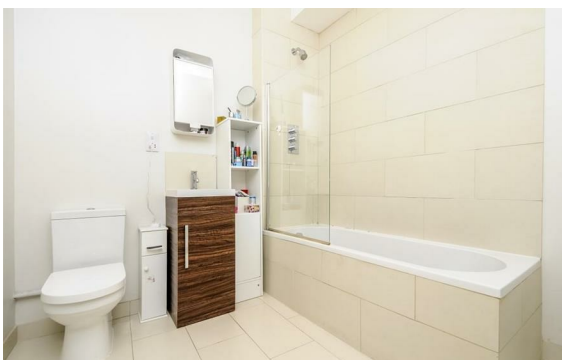
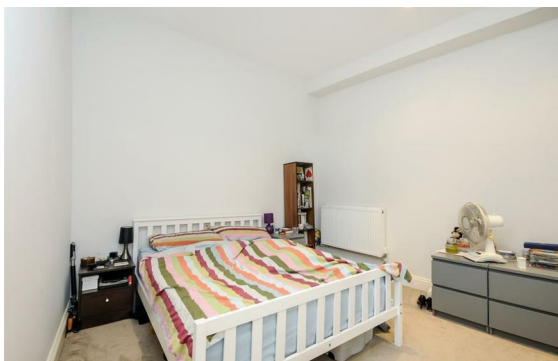


**Brendon Street, Marylebone, London, W1H**

Rent £580 PCM

1 Bed | 1 Bath | 1 Reception

*Please call us on 020 7724 2233 or email us [info@newingtonstates.com](mailto:info@newingtonstates.com) to book a viewing.*



Contemporary apartment with private patio garden. The property features a spacious open-plan reception and kitchen with integrated appliances and dining space, a bright double bedroom with built-in storage, a modern bathroom, and a separate study area. A private patio garden provides valuable outdoor space, while additional built-in storage enhances practicality throughout.

Ideally located close to Marble Arch Station and within easy reach of Marylebone Station, Hyde Park, Baker Street, and Marylebone High Street.

EPC Rating: C

## Energy Efficiency Rating: C

Agents Note: Whilst every care has been taken to prepare these particulars, they are for guidance purposes only. All measurements are approximate and are for general guidance purposes only and whilst every care has been taken to ensure their accuracy, they should not be relied upon and potential buyers/tenants are advised to recheck the measurements.

**NEWINGTON**  
— ESTATES —

60 Upper Montagu Street

London

W1H 1SN

020 7724 2233

[info@newingtonstates.com](mailto:info@newingtonstates.com)

<http://www.newingtonstates.com>