

# JOHN BRAY & SONS



Flat 3 Roebuck House 24-25 High Street  
, Hastings, TN34 3EY

Offers In Excess Of £200,000



## Flat 3 Roebuck House 24-25

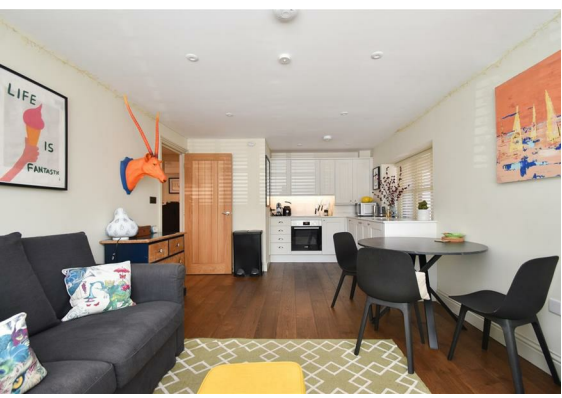
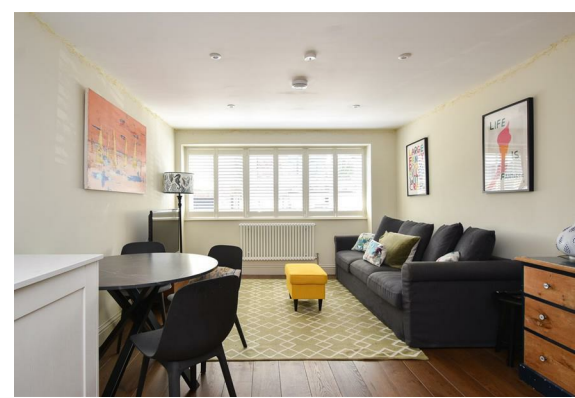
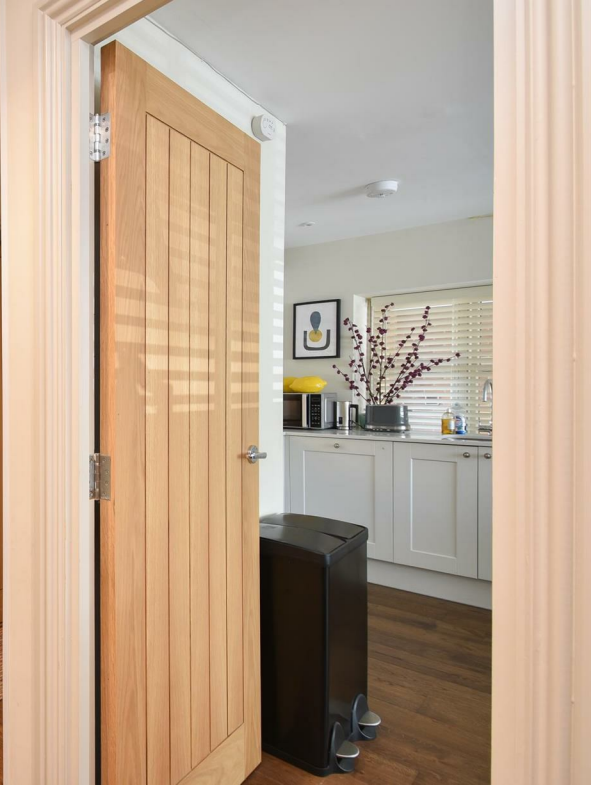
Hastings, TN34 3EY

The property: a stylish one bedroom apartment situated on the ground floor of this attractive building in the heart of Hastings Old Town. It enjoys an open plan living space featuring a luxury kitchen with high end integrated appliances, engineered oak flooring flows throughout and there are bespoke fitted shutters at the front of the property. The double bedroom benefits from a bright Southerly aspect and the bathroom enjoys marble tiling with a shower over the bath. Being sold with a share of freehold, a new lease and no onward chain it would make an ideal seaside retreat.

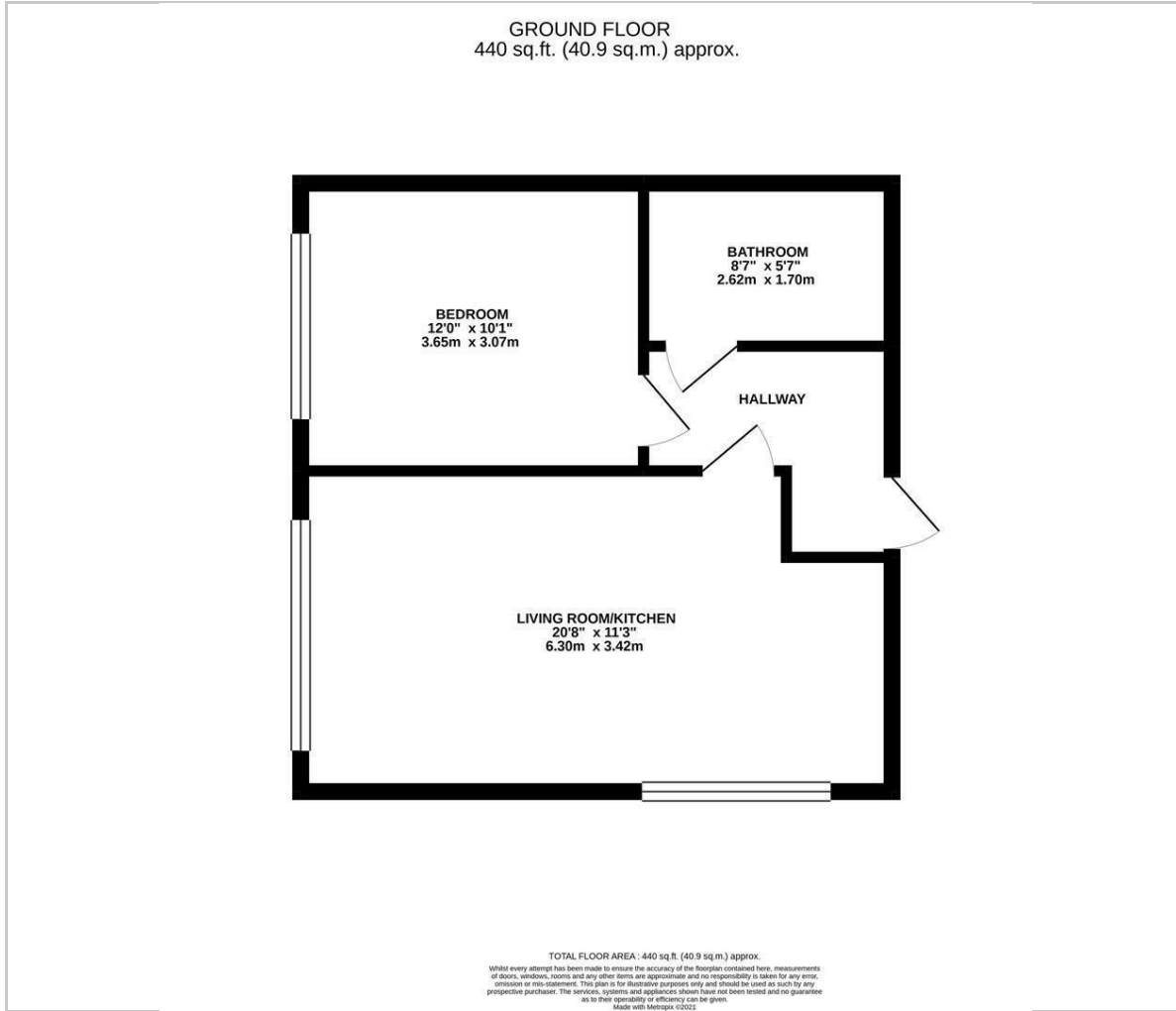
The location: positioned on the corner of the High Street and Roebuck Street with a beautiful outlook along the High Street and the East Hill behind, its perfectly placed to enjoy the thriving artistic community, cafes, eateries, antique stores and is within walking distance of the beach.

- Share of freehold
- Lease length: remainder of a 999 year lease
- Service charge: TBC
- Council Tax Band: B
- Energy Efficiency Rating: C





## Floor Plan



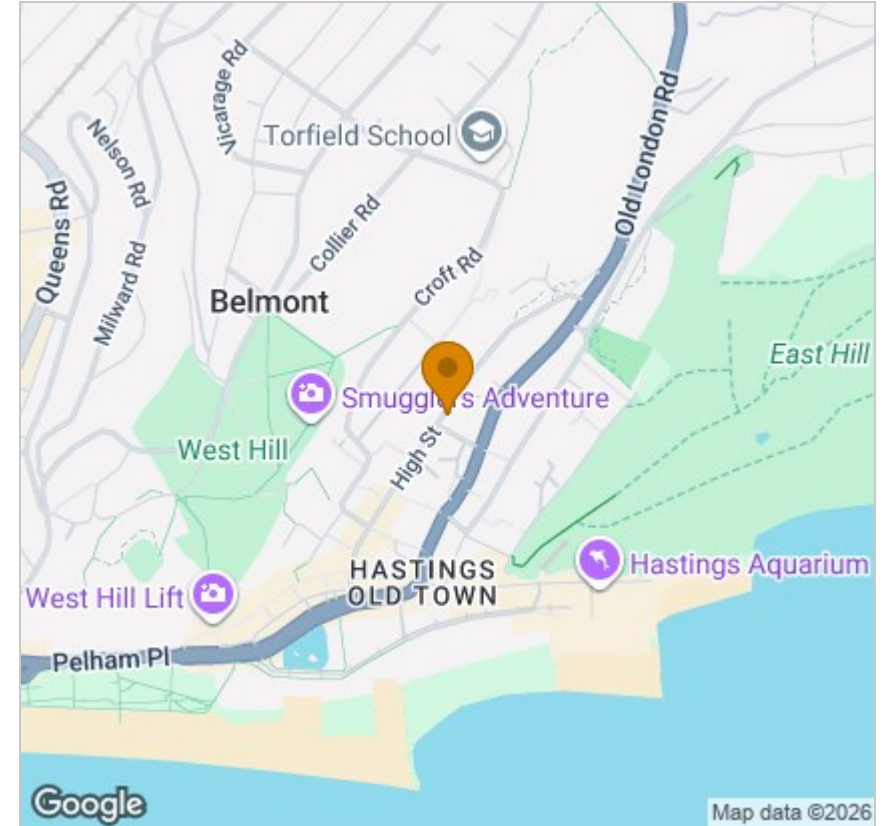
## Viewing

Please contact our John Bray Hastings Lettings Office on 01424 421544 if you wish to arrange a viewing appointment for this property or require further information.

These particulars, whilst believed to be accurate are set out as a general outline only for guidance and do not constitute any part of an offer or contract. Intending purchasers should not rely on them as statements of representation of fact, but must satisfy themselves by inspection or otherwise as to their accuracy. No person in this firm's employment has the authority to make or give any representation or warranty in respect of the property.

72 High Street, Hastings, East Sussex, TN34 3EL  
 Tel: 01424 421544 Email: enquiries@johnbrayandsons.com www.johnbrayandsons.com

## Area Map



## Energy Efficiency Graph

