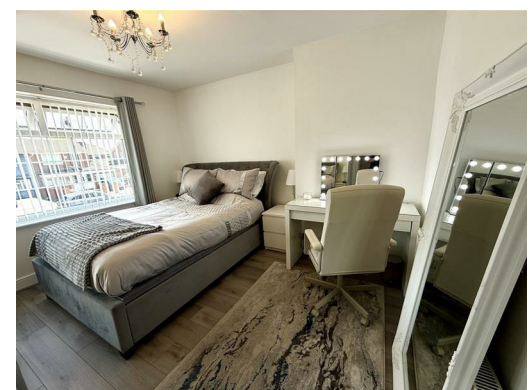
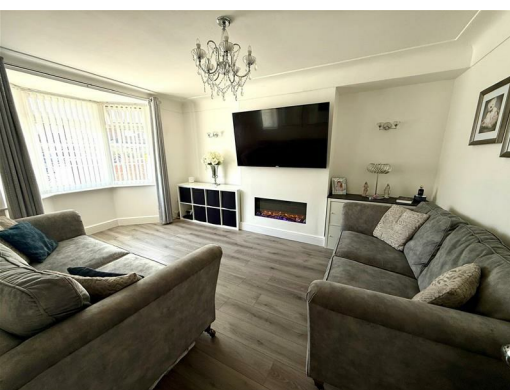




91 Page Moss Lane, Liverpool, L14 0LU

Offers around £179,950

Alpha-move are delighted to offer this super three bed extended mid-townhouse on Page Moss Lane L36, close to schools, major transport links and local amenities. The layout briefly comprises of hallway, front living room, fitted rear kitchen / diner, rear hall and storage on the ground floor, with three double bedrooms and family bathroom on the upper floor. Externally, there is a paved frontage for driveway parking, with a good sized low maintenance landscaped garden and porcelain patio to the rear also that benefits from not being overlooked. This property has been modernised throughout and is in turnkey condition, making it an ideal home for first time buyers and young families. Early viewing essential.



Hallway

14'4" x 5'6" (4.39 x 1.68)

UPVC door to front aspect, radiator.

Living Room

16'6" x 12'1" (5.04 x 3.69)

UPVC bay window to front aspect, radiator, inset fire.

Kitchen / Diner

14'2" x 12'1" (4.32 x 3.69)

UPVC window to rear aspect, radiator, wall and base units, fridge and freezer, washing machine and dishwasher.

Rear Hallway

7'9" x 2'11" (2.38 x 0.89)

UPVC door to rear aspect, two storage cupboards.

Bedroom One

13'3" x 10'4" (4.06 x 3.16)

UPVC window to front aspect, radiator.

Bedroom Two

11'6" x 8'9" (3.53 x 2.69)

UPVC window to rear aspect, radiator.

Bedroom Three

9'0" x 9'6" (2.75 x 2.91)

UPVC window to front aspect, radiator.

Bathroom

7'8" x 5'2" (2.34 x 1.58)

UPVC window to rear aspect, radiator, bath and shower, WC and sink.

Energy Efficiency Rating		
	Current	Potential
Very energy efficient - lower running costs		
(92 plus) A		
(81-91) B		
(69-80) C		
(55-68) D		
(39-54) E		
(21-38) F		
(1-20) G		
Not energy efficient - higher running costs		
England & Wales	EU Directive 2002/91/EC	

Environmental Impact (CO ₂) Rating		
	Current	Potential
Very environmentally friendly - lower CO ₂ emissions		
(92 plus) A		
(81-91) B		
(69-80) C		
(55-68) D		
(39-54) E		
(21-38) F		
(1-20) G		
Not environmentally friendly - higher CO ₂ emissions		
England & Wales	EU Directive 2002/91/EC	

