



Housetype 1760 Breacla,
Lancaster, LA1 4NU

Housetype 1760 Breacla, , Lancaster

The property at a glance

4  2  2 

- Detached Family Home
- Four bedrooms
- Open Plan Living
- Utility Room
- En-suite to master bedroom
- Garden & Parking
- High Specification
- Three Seperate living spaces
- Freehold,
- Council Tax TBC

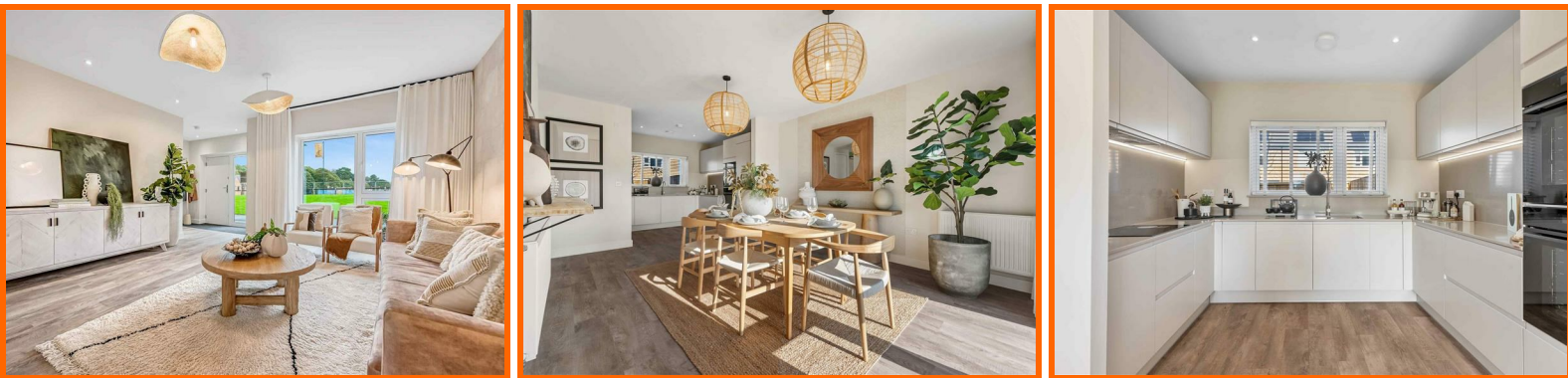


Get in touch today

01524 401402
info@gfproperty.co.uk
gfproperty.co.uk

£590,000

Get to know the property



More than just a four bed...

At 1,760 square feet, this exceptional four-bedroom home is designed to adapt to your lifestyle. Its symmetrical frontage offers timeless curb appeal, while the thoughtfully designed interior provides unparalleled flexibility. With three separate living spaces, including two lounges – one ideal for a playroom – and an additional space perfect for a home office, this home is tailor-made for modern living.

Spread across two storeys, the home features four generous double bedrooms, including a master with a private ensuite, ensuring comfort and privacy for everyone. The versatile layout and spacious design make it an ideal choice for families or those who love to entertain.

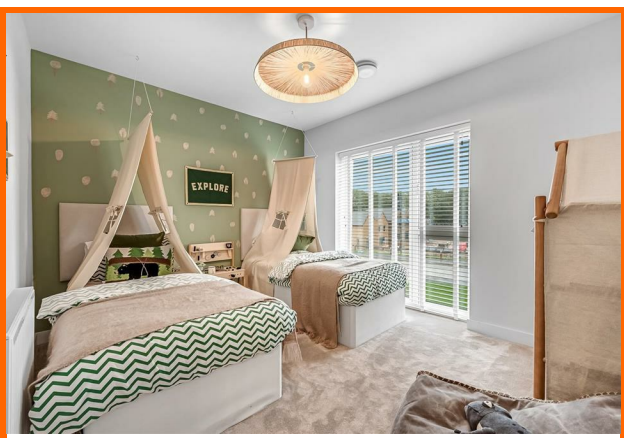
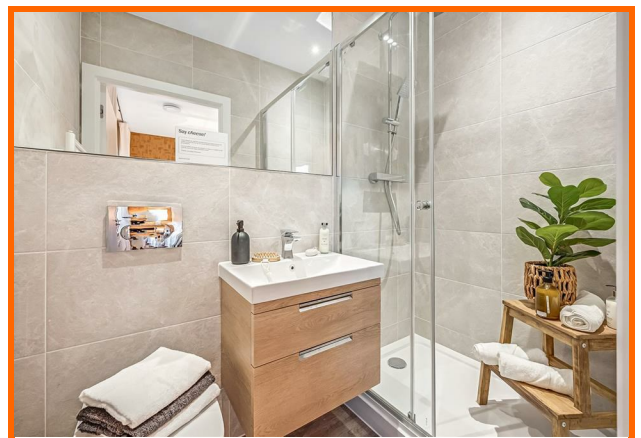
Three living spaces, including a home office and playroom option

Four spacious double bedrooms

A home designed to evolve with your lifestyle



Housetype 1760 Breacra, Lancaster, LA1 4NU



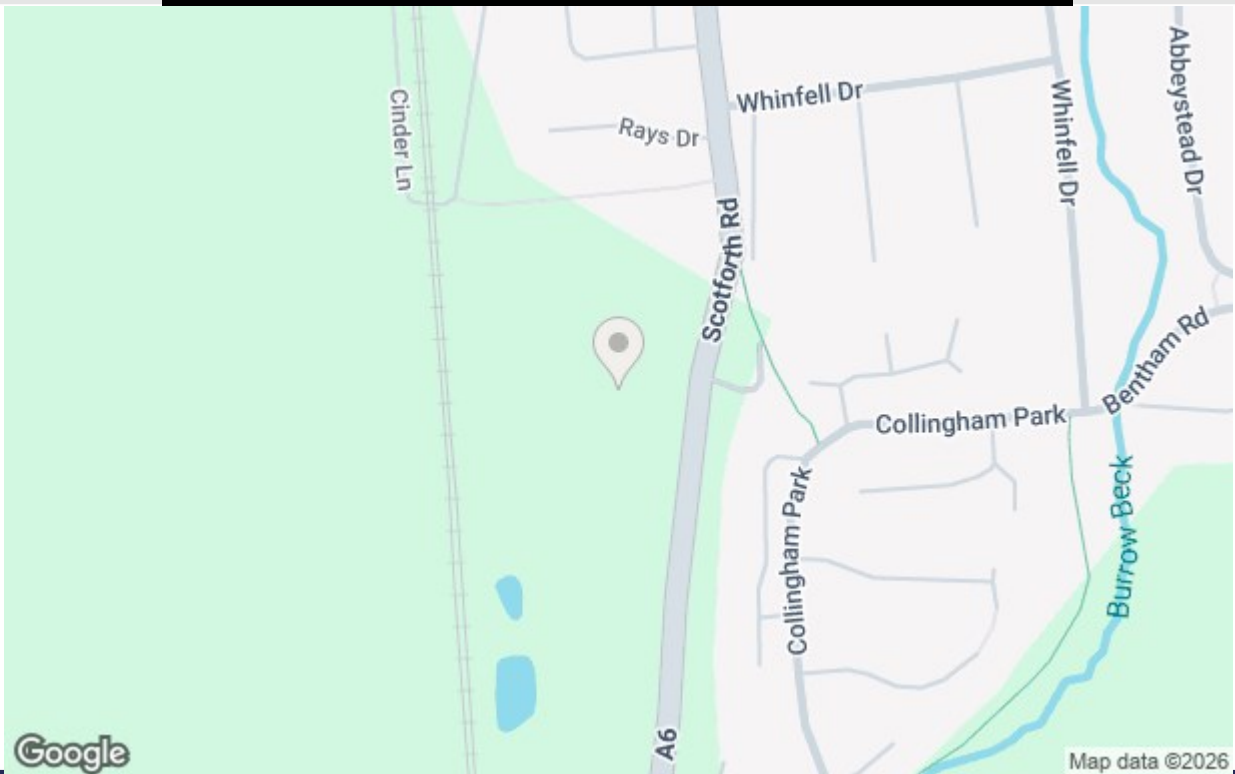
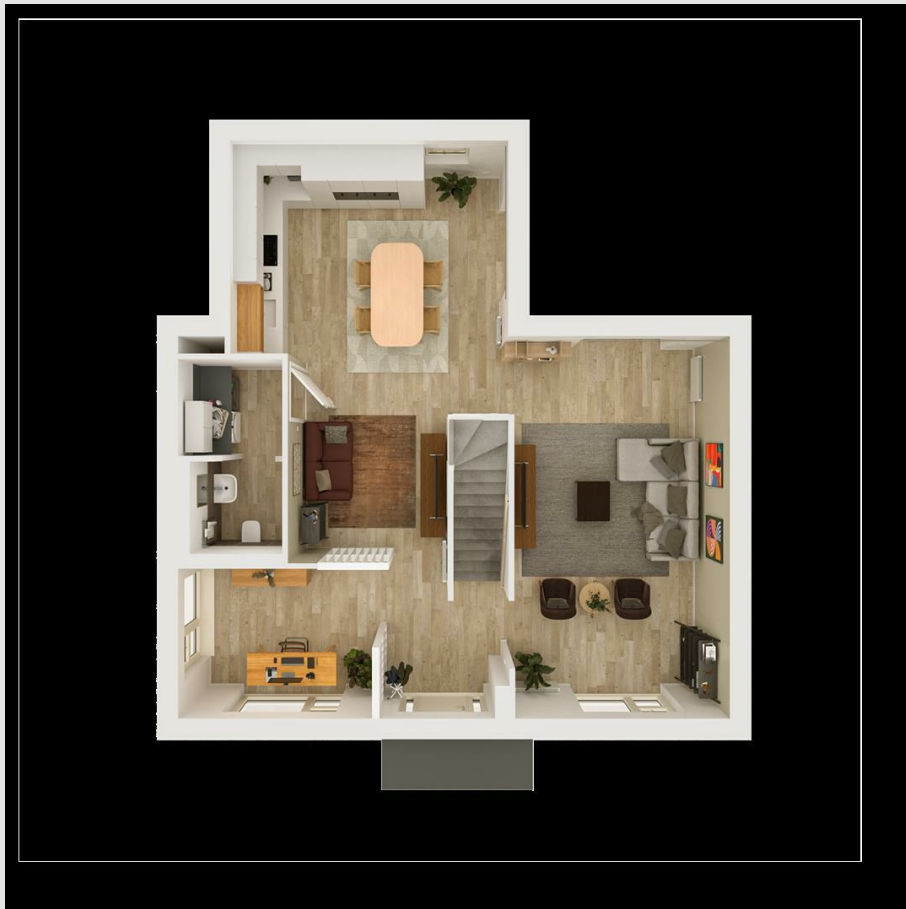
Get in touch today

01524 401402

info@gfproperty.co.uk

gfproperty.co.uk

Take a nosey round



Get in touch today

01524 401402
info@gfproperty.co.uk
gfproperty.co.uk

| Energy Efficiency Rating | | Environmental Impact (CO ₂) Rating | |
|---|-------------------------|--|---|
| | Current | Potential | |
| Very energy efficient - lower running costs | | | Very environmentally friendly - lower CO ₂ emissions |
| (92 plus) A | | | (92 plus) A |
| (81-91) B | | | (81-91) B |
| (69-80) C | | | (69-80) C |
| (55-68) D | | | (55-68) D |
| (39-54) E | | | (39-54) E |
| (21-38) F | | | (21-38) F |
| (1-20) G | | | (1-20) G |
| Not energy efficient - higher running costs | | | Not environmentally friendly - higher CO ₂ emissions |
| England & Wales | EU Directive 2002/93/EC | | England & Wales |
| | | | |