

Wyndham Crescent, N19

£550,000

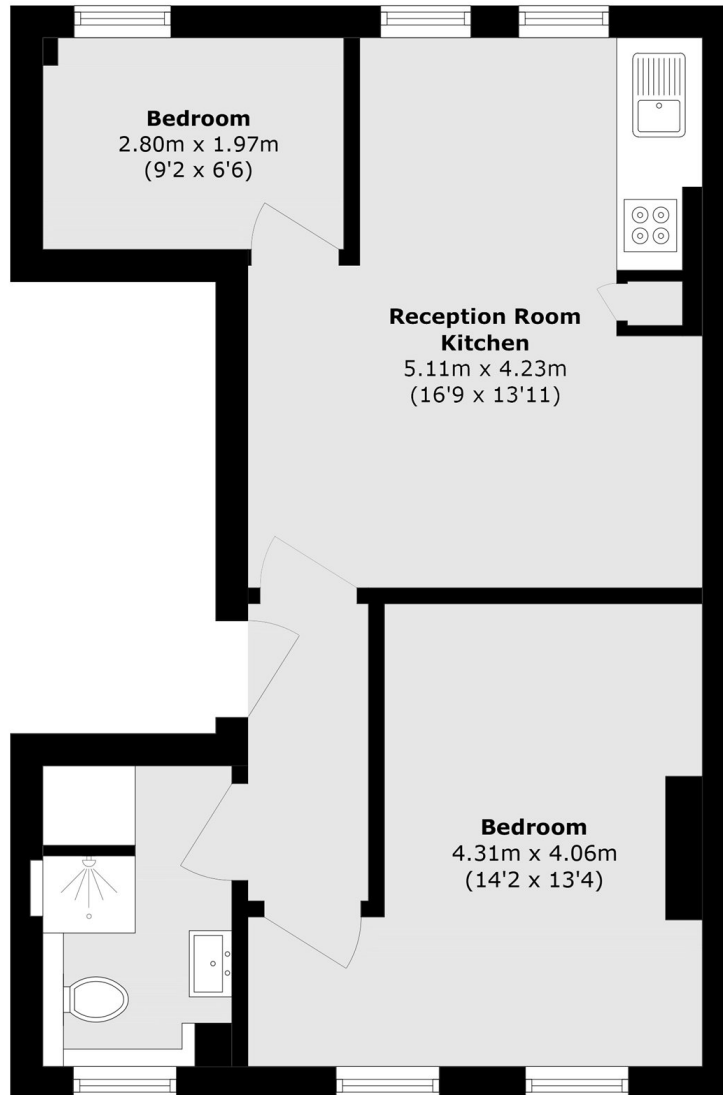
A fully renovated two bedroom apartment set on the entire first floor of a traditional Victorian conversion. The property features a south facing reception/kitchen and will be sold with no onward chain.

Wyndham Crescent offers a peaceful setting while remaining moments from the vibrant amenities of Tufnell Park. The area benefits from excellent transport links with Tufnell Park station (Northern Line) 300m away.

Features

- Two Bedrooms
- High Specification
- Fully Refurbished
- Chain Free
- Victorian Conversion
- Close to the Heath

Wyndham Crescent, London, N19



Total area (approx.): 49.6 sq. m (533.8 sq. ft)