



**Primrose Gardens, Bushey, WD23**

Bushey

**£499,950**

**Bedrooms: 3**

**Bathrooms: 1**

**Receptions: 1**

A bright and spacious THREE BEDROOM END OF TERRACE HOUSE situated on a popular residential road, conveniently located and within walking distance to all local shopping/transport facilities and within a great catchment area for all local schools. The property is being offered in good decorative order and benefits from: Replacement Double Glazed Windows, Gas Fired Heating To Radiators, Fully Boarded Loft With Velux Window, Reception Room, Kitchen, Three Bedrooms, Bathroom, Rear Garden With Gated Side Access.



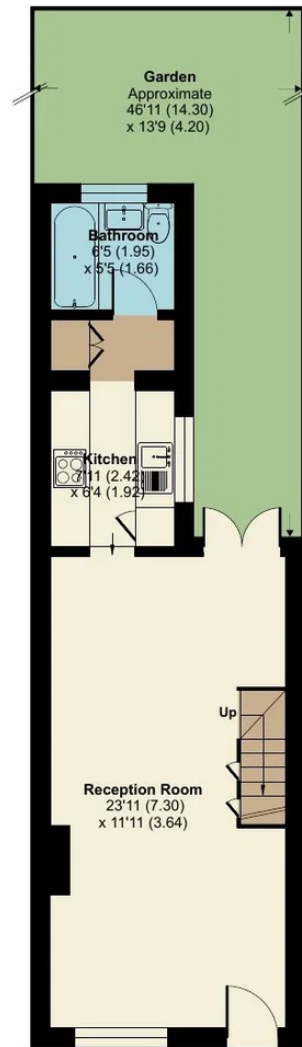




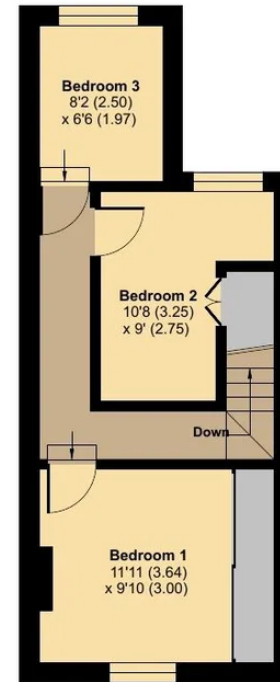
# Primrose Gardens, Bushey, WD23

Approximate Area = 738 sq ft / 68.5 sq m

For identification only - Not to scale



GROUND FLOOR



FIRST FLOOR



Floor plan produced in accordance with RICS Property Measurement 2nd Edition,  
Incorporating International Property Measurement Standards (IPMS2 Residential). © n̄checon 2026.  
Produced for Benjamin Stevens. REF: 1457663