

Methuen Park, N10

£850,000

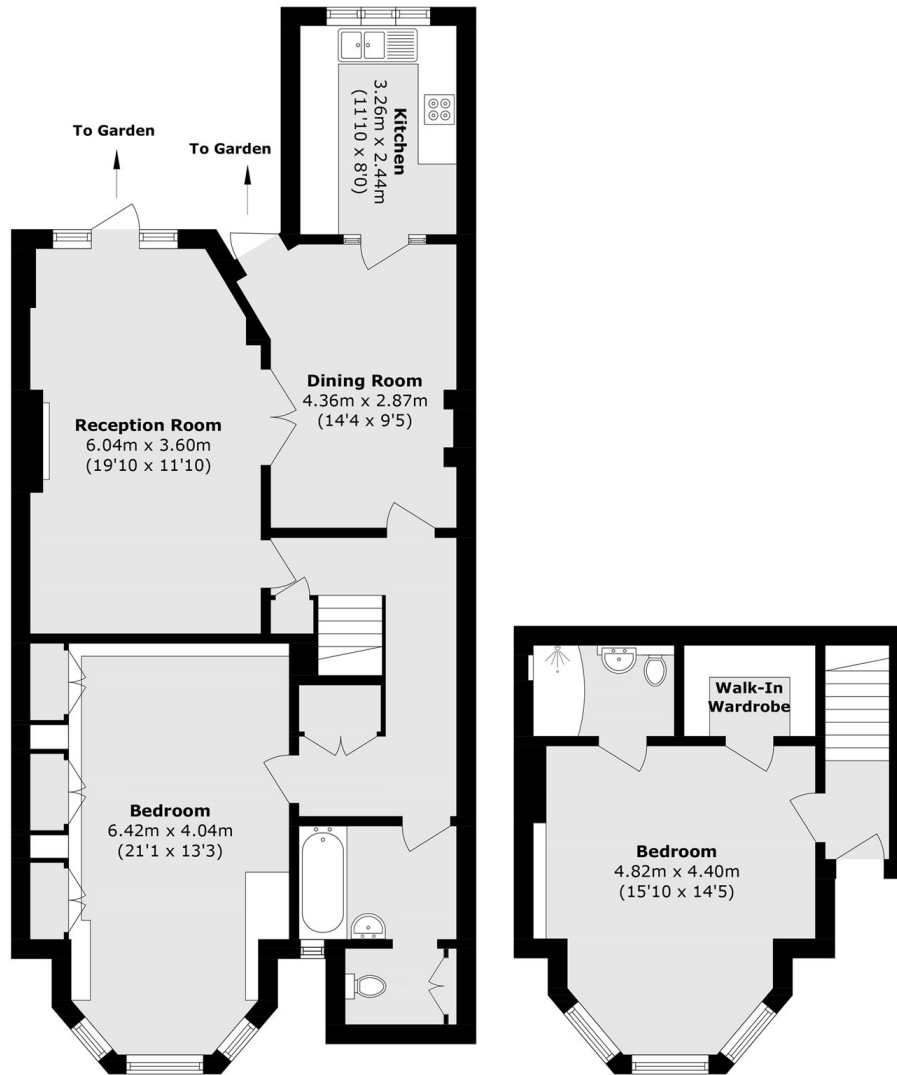
This two double bedroom split level Edwardian conversion with two bathrooms and direct access out onto a private garden come with potential to extend (STPP) and freeholder consent.

Located within a short walk from Muswell Hill Broadway with its vast array of shops and restaurants and bus services to Highgate Tube (Northern Line), also close at hand is Alexandra Park, Palace and its Main Line Station along with some of North London's best public schools.

Features

- Two Bedrooms
- Private Garden
- Edwardian Conversion
- Split Level
- Two Bathrooms
- Period Features

Methuen Park, London, N10



Lower Ground Floor

Ground Floor

Total area (approx.): 115.6 sq. m (1244.3 sq. ft)