



Price
£380,000

Freehold

3x  2x  1x 

**Plot Nassella Gardens,
Grasmere Gardens
(Phase 1), Chestfield,
Whitstable, Kent, CT5**

OVER 60?

Secure this property
for up to **59% less!**

Wards
Helping you move forwards



Main features

- A stunning 3 bedroom semi-detached family house
- Spacious bedrooms
- Beautiful open plan lounge/dining room
- Driveway parking with EV charger
- Rear gardens are fenced and turfed and boast a patio area

Accommodation

GROUND FLOOR

Hallway

Cloakroom

Kitchen: 13'1 x 8'8 (3.99m x 2.64m)

Lounge/Dining: 18'7 x 13'6 (5.67m x 4.12m)

FIRST FLOOR

Landing

Bedroom 1 : 12'1 x 11'0 (3.69m x 3.36m)

En suite Shower Room

Bedroom 2 : 10'1 x 9'5 (3.08m x 2.87m)

Bedroom 3 : 10'5 x 8'3 (3.18m x 2.52m)

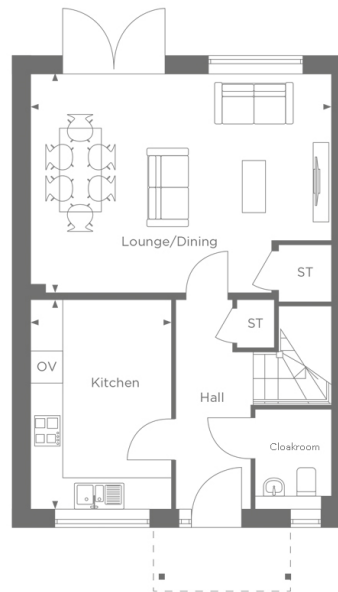
Bathroom

OUTSIDE

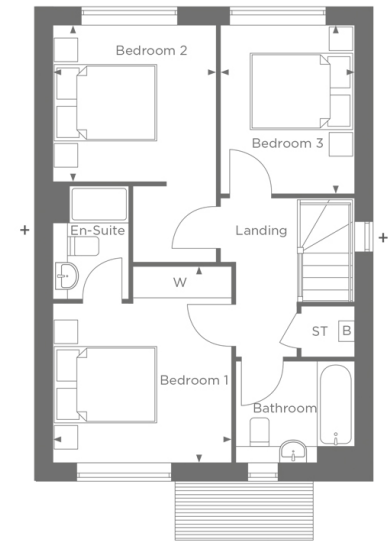
Front Garden

Driveway

Rear Garden



THE DAISY
Ground Floor
House Total Area - 94.7sq.m / 1020sq.ft



THE DAISY
First Floor
House Total Area - 94.7sq.m / 1020sq.ft

Call Whitstable - 01227 772272 ■ wardsokent.co.uk

- If buying to let, the energy rating will need to be improved to at least 'E' rating before you can let the property
- Appliances & services are untested, dimensions are approximate and floor plans are not to scale

- Legal advice should be taken to verify fixtures/fittings, planning, alterations and/or lease details
- Through a Homewise Home For Life Plan people aged 60+ can secure this property for up to 59% less, by purchasing a Lifetime Lease



12033972/20260110/AR/NF