



49 CHAPEL LANE

LAWRENCE WESTON
BS11 0TQ

49 CHAPEL LANE

LAWRENCE WESTON BS11 0TQ

HALLWAY

15'4" x 6'05"

Window to side aspect, under stairs cupboard, stairs rising to first floor.

LIVING ROOM

10'6" x 18'1"

Bay window to front aspect, window to rear aspect, gas fire place, sliding doors leading into dining room.

DINING ROOM

8'1" x 10'11"

Window to rear aspect, door into kitchen

KITCHEN

11'2" x 7'0"

Window to front aspect, door leading to side lobby and wc, fitted with a range of wall and base units with roll top work surfaces. Gas cooker, stainless steel sink with mixer tap over, plumbing for washing machine.

LOBBY

Door to side garden

WC

4'6" x 2'8"

Window to side aspect, low level wc

FIRST FLOOR LANDING

7'7" x 6'4"

Access to loft space

BEDROOM 1

10'11" x 13'9"

Window to front aspect, over stairs cupboard

BEDROOM 2

9'10" x 10'11"

Window to side aspect, cupboard

BATHROOM

7'5" x 8'5"

Window to side aspect, panel bath with shower over, pedestal sink, low level wc, radiator

BEDROOM 3

10'11" x 6'9"

Window to side aspect,

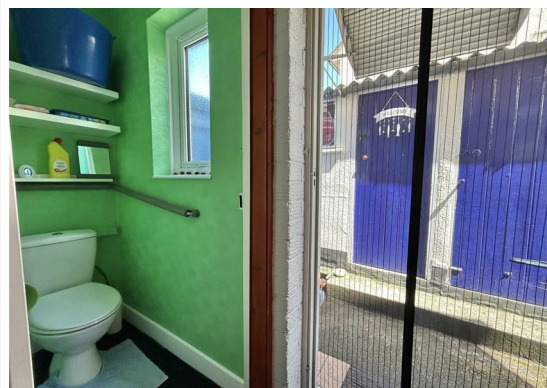
GARDENS

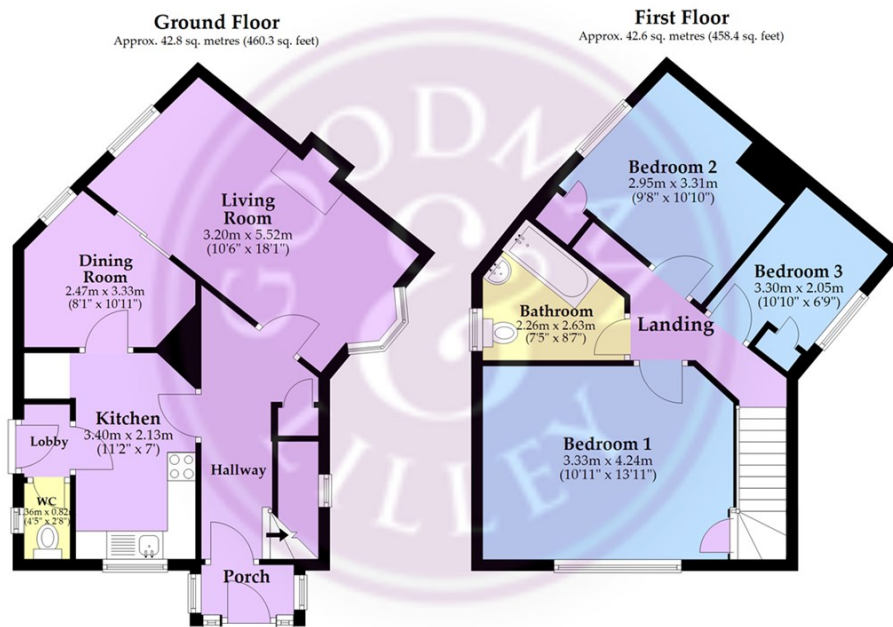
There are gardens to the front and rear. The rear is easy to maintain with steel fence panelling, a decking area and the remainder laid to patio and chipping

PARKING

There is parking to the front for 1 vehicle.







Total area: approx. 85.4 sq. metres (918.7 sq. feet)

Whilst every attempt has been made to ensure accuracy of the floor plan all measurements are approximate and no responsibility is taken for any error, omission or measurement.

**GOODMAN & LILLEY
BRANCH NETWORK**

HENLEAZE

156 Henleaze Road
Henleaze
BS9 4NB
0117 213 0777
henleaze@goodmanlilley.co.uk

SHIREHAMPTON

9 HIGH STREET
SHIREHAMPTON
BS11 0DT
0117 213 0333
SHIRE@GOODMANLILLEY.CO.UK

PORTISHEAD

Rembrandt House
36 High Street
Portishead
BS20 6EN
01275 430440
sales@goodmanlilley.co.uk

LETTINGS

01275 299010
LETTINGS@GOODMANLILLEY.CO.UK

CLEVEDON

28 Hill Road
Clevedon
BS21 7PH
01275 403 660
clevedon@goodmanlilley.co.uk

LAND & NEW HOMES

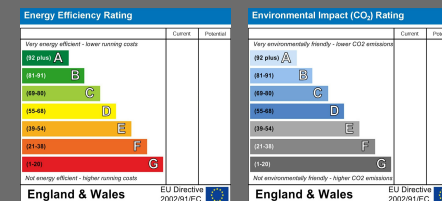
0117 213 0151
LNH@GOODMANLILLEY.CO.UK

3 BEDROOMS
TENURE - FREEHOLD

2 RECEPTION ROOMS
IN ALL SQ.FT

1 BATHROOMS
COUNCIL TAX BAND - B

- Traditional brick-built 3-bedroom semi-detached home
- Two well-proportioned reception rooms offering flexible living space
- Highly regarded schools nearby
- Off-road parking providing convenient space for vehicles
- Three spacious double bedrooms
- Excellent transport links with easy access to local amenities and commuter routes
- Front and rear gardens designed for easy maintenance
- Ideal for families seeking generous accommodation in a well-connected location



Opening hours vary slightly in each office
 Mon to Fri - Usually 9am till 6pm
 Saturday 9.00am-4.00pm