



Meridian Rise, Ipswich, IP4 2GF

welcome to

Meridian Rise, Ipswich

This well-presented Coach House benefits from two large, double bedrooms, an open plan kitchen/diner/lounge, a large, four piece family bathroom, one allocated parking space and a car port.

Entrance Hall

Carpet flooring and a staircase leading to the remainder of the coach house.

Landing

Carpet flooring, loft hatch and one radiator.

Master Bedroom

Double glazed window to the rear, carpet flooring, one radiator and a double built in wardrobe.

Bedroom Two

Double glazed window to the rear, carpet flooring and one radiator.

Bathroom

Large, stunning four piece bathroom with low level WC, pedestal wash hand basin, double shower with glass enclosure, a bath with shower attachment, tiled flooring, part tiled walls, shaver point, extractor, fan, spotlights, a storage cupboard and one radiator.

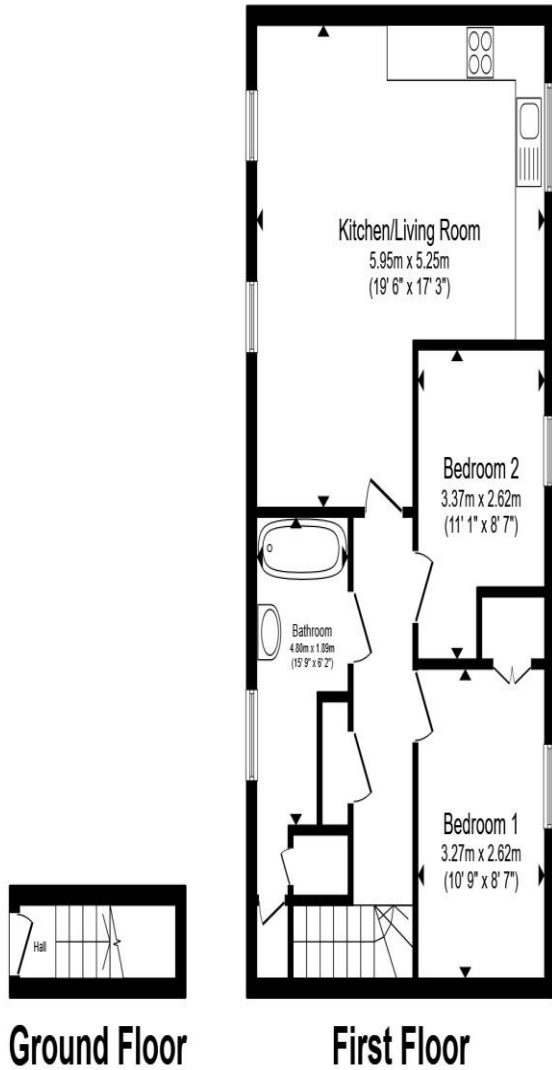
Kitchen/Diner/Lounge

Beautiful, open plan room, flooded with light, via double glazed windows front and rear, hard tiled wood effect flooring throughout, two radiators, TV point, spotlights, ample space for a large sofa and table and chairs. The kitchen itself benefits from eye level units in white, base level units in oak effect with stone effect worktop surfaces, a stainless steel one and a half bowl sink plus drainer and chrome mixer tap, an integrated oven with gas hob and extractor hood, integrated fridge/freezer and washing machine, a boxed in boiler.

Outside:

Parking

One allocated parking space to the front and a car port under the property, with enough space for a large SUV.



Total floor area 64.3 m² (692 sq.ft.) approx

This floor plan is for illustrative purposes only. It is not drawn to scale. Any measurements, floor areas (including any total floor area), openings and orientation are approximate. No details are guaranteed, they cannot be relied upon for any purpose and they do not form part of any agreement. No liability is taken for any error, omission or misstatement. A party must rely upon its own inspection(s). Powered by www.propertybox.io



welcome to
Meridian Rise,
Ipswich

- Freehold Coach House
- Two large, double bedrooms
- Open plan kitchen/diner/lounge
- Large four piece family bathroom
- One allocated parking space & car port

Tenure: Freehold EPC Rating: Awaited
Council Tax Band: B

£185,000



view this property online williamhbrown.co.uk/Property/IPS121416



Property Ref:
IPS121416 - 0002

1. MONEY LAUNDERING REGULATIONS Intending purchasers will be asked to produce identification documentation at a later stage and we would ask for your co-operation in order that there is no delay in agreeing the sale. 2. These particulars do not constitute part or all of an offer or contract. 3. The measurements indicated are supplied for guidance only and as such must be considered incorrect. Potential buyers are advised to recheck measurements before committing to any expense. 4. We have not tested any apparatus, equipment, fixtures or services and it is in the buyers interest to check the working condition of any appliances. 5. Where an EPC, or a Home Report (Scotland only) is held for this property, it is available for inspection at the branch by appointment. If you require a printed version of a Home Report, you will need to pay a reasonable production charge reflecting printing and other costs. 6. We are not able to offer an opinion either written or verbal on the content of these reports and this must be obtained from your legal representative. 7. Whilst we take care in preparing these reports, a buyer should ensure that his/her legal representative confirms as soon as possible all matters relating to title including the extent and boundaries of the property and other important matters before exchange of contracts.

William H Brown is a trading name of Sequence (UK) Limited which is registered in England and Wales under company number 4268443, Registered Office is Cumbria House, 16-20 Hockliffe Street, Leighton Buzzard, Bedfordshire, LU7 1GN. VAT Registration Number is 500 2481 05.



william h brown



01473 226101



ipswich@williamhbrown.co.uk



16-18 Wolsey House, Princes Street, IPSWICH,
Suffolk, IP1 1QT



williamhbrown.co.uk