

Avenue Road, Gosport,  
Hampshire, PO12 1LA

£229,000



End Of Terraced House

Two Reception Rooms

Gas Central Heating

Located Near To Stoke Road & Its Facilities

Three Bedrooms

Kitchen

PVCu Double Glazing

No Forward Chain

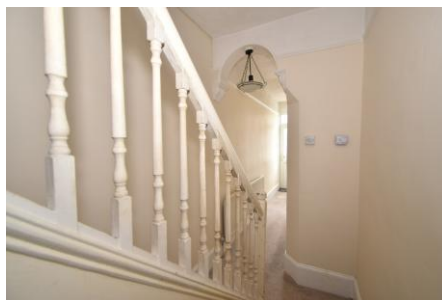
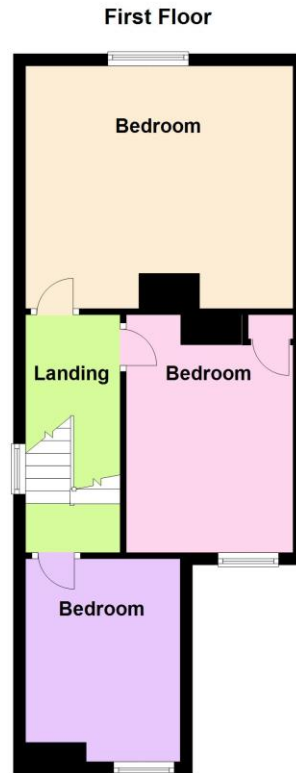
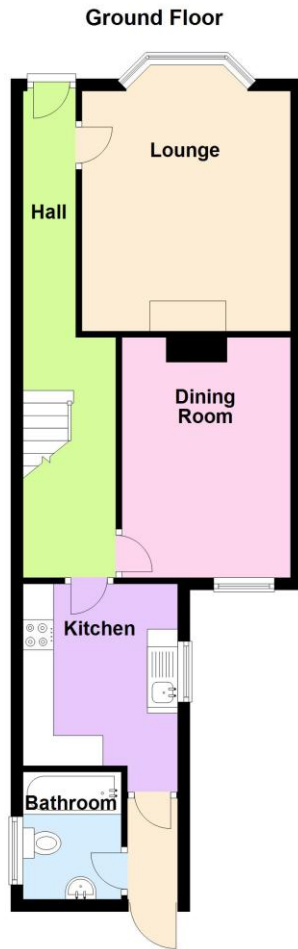
**023 9258 5588**

6 Stokesway, Stoke Road, Gosport, Hants, PO12 1PE

Email: [office@dimon-estate-agents.co.uk](mailto:office@dimon-estate-agents.co.uk)

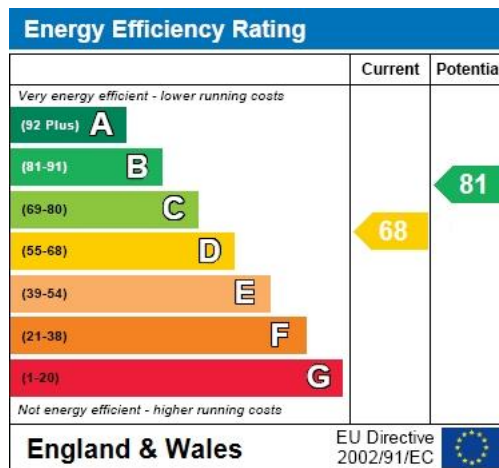
To view all our properties visit:

**[www.GosportProperty.com](http://www.GosportProperty.com)**



**SELLING YOUR OWN PROPERTY IN GOSPORT?**  
**WE ARE A FAMILY RUN BUSINESS SELLING HOMES IN GOSPORT FOR 55 YEARS**  
**AND WOULD WELCOME THE OPPORTUNITY TO BE CHOSEN AS YOUR ESTATE AGENT**

Entrance Hall	PVCu double glazed front door, radiator, ornamental arch, stairs to first floor with spindled balustrade, understairs recess, meter cupboard.
Lounge	15'8" (4.78m) Into Bay x 11'4" (3.45m) PVCu double glazed window, fireplace with cast iron inset and tiled hearth, double radiator, coved ceiling, ceiling rose, picture rail.
Dining Room	12'11" (3.94m) x 9'2" (2.79m) PVCu double glazed window, radiator, built in cupboard, picture rail.
Kitchen	9'9" (2.97m) x 8'4" (2.54m) Single drainer stainless steel sink unit, cream fronted wall and base units with worksurface over, built in oven and 4 ring gas hob with cooker extractor canopy over, PVCu double glazed window, double radiator, coved ceiling, tiled splashbacks, recess for fridge/freezer, wall mounted gas central heating boiler concealed within cupboard.
Rear Lobby	
Bathroom	7'5" (2.26m) Max x 5'3" (1.6m) Bath, pedestal hand basin, low level W.C., tiled splash backs.
ON THE 1ST FLOOR	
Landing	PVCu double glazed window, access to loft space, spindled balustrade, picture rail.
Bedroom 1	14'6" (4.42m) x 13'1" (3.99m) PVCu double glazed window, cast iron fireplace with tiled inset, picture rail.
Bedroom 2	11'8" (3.56m) Plus Recess x 9'0" (2.74m) PVCu double glazed window, double radiator, cast iron fireplace with tiled inset, built in cupboard, picture rail.
Bedroom 3	10'10" (3.3m) x 8'7" (2.62m) PVCu double glazed window, cast iron fireplace with tiled inset, double radiator.
OUTSIDE	
Front Forecourt	With brick wall and iron gate.
Rear Garden	With brick built shed, paved patio
Services	We understand that this property is connected to mains gas, electric, water and sewage.
Tenure	Freehold.
Council Tax	Band B.
Property Information	For information on broadband speed and mobile phone coverage for this property visit: <a href="https://checker.ofcom.org.uk">https://checker.ofcom.org.uk</a> For flood risk information visit: <a href="https://www.gov.uk/check-long-term-flood-risk">https://www.gov.uk/check-long-term-flood-risk</a>



Full Energy Performance Certificate  
available upon request

Appointment		
Date:	Time:	Person Meeting:
Viewing Notes		

These particulars, whilst believed to be accurate, are set out as a general outline for guidance and do not constitute any part of an offer or contract. Please note we have not tested any apparatus, fixtures, fittings, or services. Interested parties must undertake their own investigation into the working order of these items. All measurements are approximate. Floor Plans are obtained from a third party and may contain inaccuracies. Photographs are for guidance only and may change over the course of marketing. Information provided on lease terms, maintenance and ground rent have been provided by the vendor and you should ask your legal representative to confirm this information before exchanging contracts.