





21 Violet Grove

Northwich

Immaculate 3 bedroom semi in Winnington close to local amenities.

Council Tax band: C

Tenure: Freehold

EPC Energy Efficiency Rating: B

EPC Environmental Impact Rating: B

- MUST-SEE PROPERTY
- Three Bedrooms
- Semi-Detached Home
- Immaculate Design Throughout
- Downstairs WC
- Double Driveway
- Close to Local Amenities
- En-Suite to the Master Bedroom
- Set in Popular Winnington
- Video Tour Available

Hallway

Lounge

Kitchen

Downstairs WC

Landing

Master Bedroom

En-Suite

Bedroom Two

Bedroom Three

Bathroom

















Violet Grove Winnington

Approximate Gross Internal Floor Area = 69.4 sq m / 747 sq ft

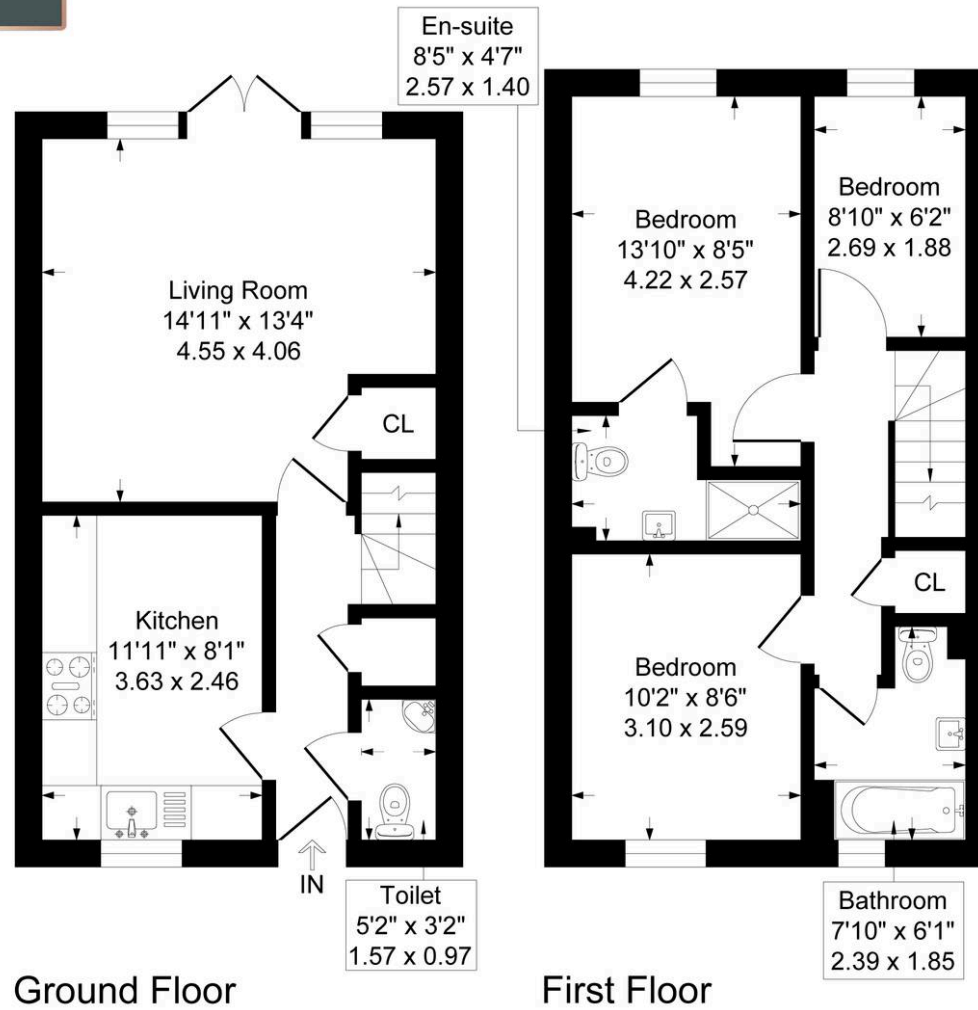


Illustration for identification purposes only, measurements are approximate, not to scale.

Vincent James Estate Agents

87 Witton Street, Northwich - CW9 5DR

01606663939 • hello@vincentjamesestateagents.co.uk • www.vincentjamesestateagents.co.uk/