



11 Primrose Close, Witney



11 Primrose Close

A modern and exceptionally well-presented three-bedroom terraced home located on the popular Madley Park development within walking distance of all local amenities.

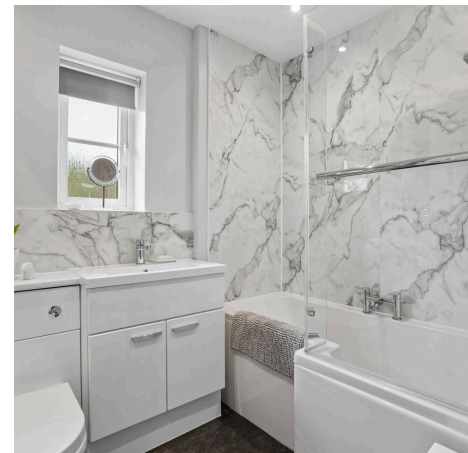
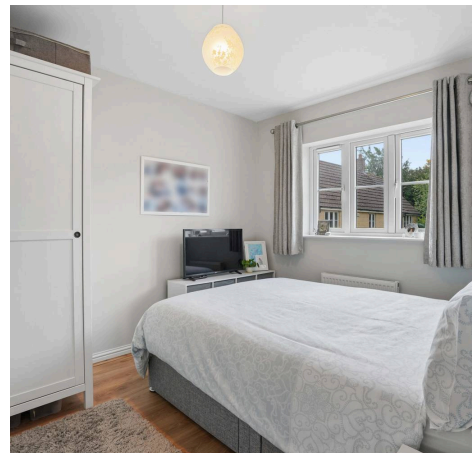
Council Tax band: D

Tenure: Freehold

EPC Energy Efficiency Rating: C

EPC Environmental Impact Rating: C

- Modern three-bedroom terraced home located on the popular Madley Park development within walking distance of all local amenities.
- Open plan kitchen/dining room.
- Garage and off-street parking.
- Stylish bathroom with bath and shower over.
- Three well-proportioned bedrooms, master bedroom with ensuite.
- Beautifully landscaped rear garden with decked area.



Primrose Close - Witney

Approximate Gross Internal Area = 108.8 sq m / 1171 sq ft

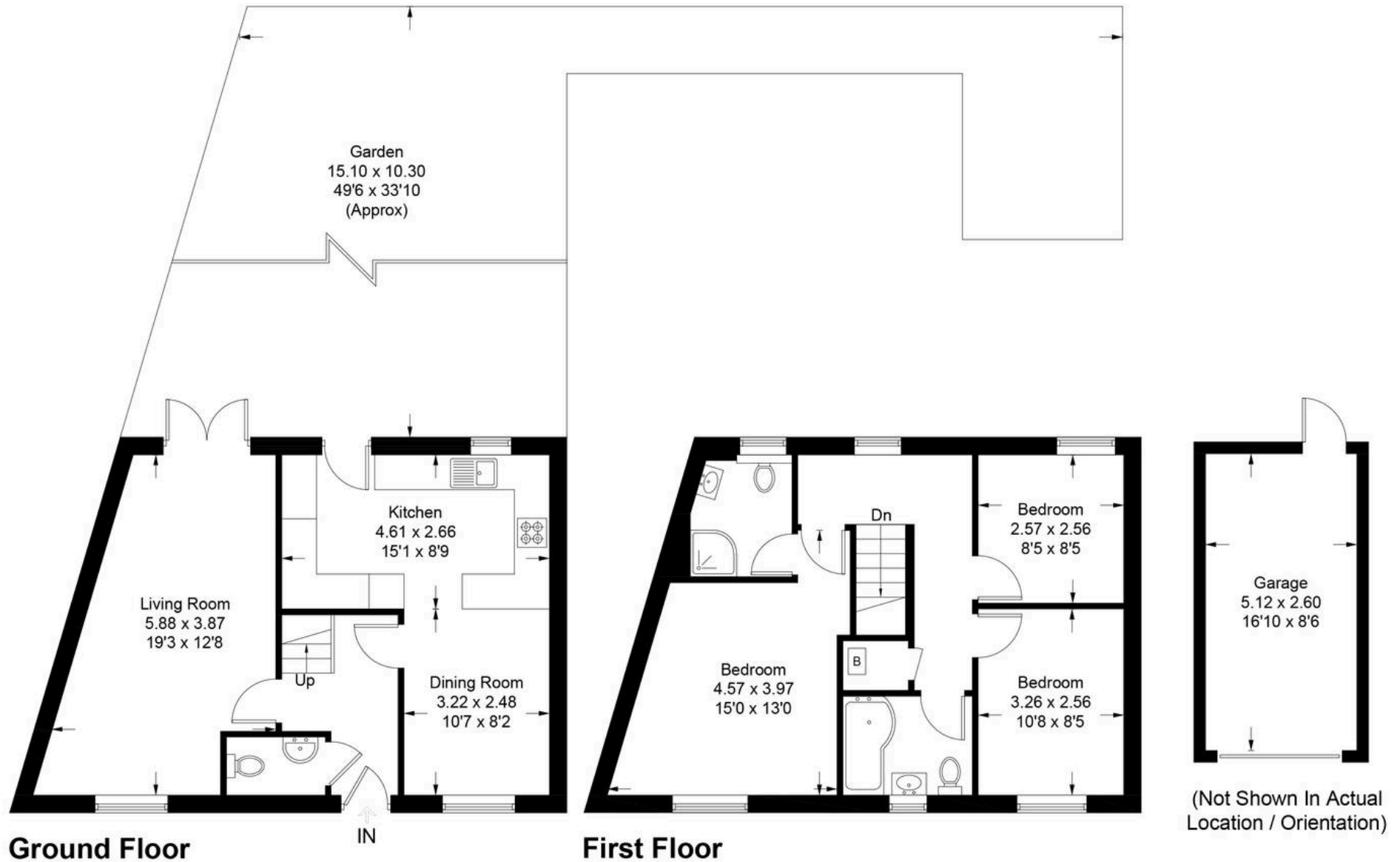


Illustration for identification purposes only, measurements are approximate, not to scale. Fourlabs.co © (ID1311506)



Simpsons Witney Branch

4 Langdale Court Witney, Oxfordshire - OX28 6AD

01993 835030 • witney@simpsonsproperty.com • www.simpsonsproperty.com/