

WE VALUE



YOUR HOME



Datchet Green, Brightwell-Cum-Sotwell  
£285,000



Offered with no onward chain, this end-of-terrace bungalow occupies a corner plot and enjoys a fabulous west-facing garden, perfect for soaking up the afternoon and evening sun.

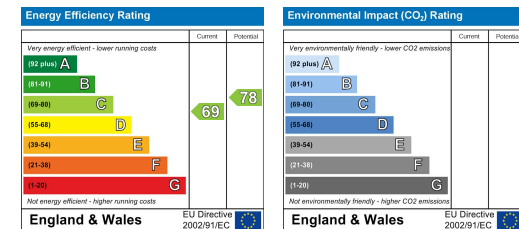
Inside, the accommodation is thoughtfully laid out, featuring a comfortable lounge with sliding doors that open directly onto a decked outdoor seating area, seamlessly blending indoor and outdoor living. The property also includes a kitchen, a bedroom with built-in storage, a practical wet room, and a spacious hallway storage cupboard providing excellent additional space.

Tucked away in a private close, the bungalow is ideally positioned within easy walking distance of the village shop and amenities in Brightwell-Cum-Sotwell.



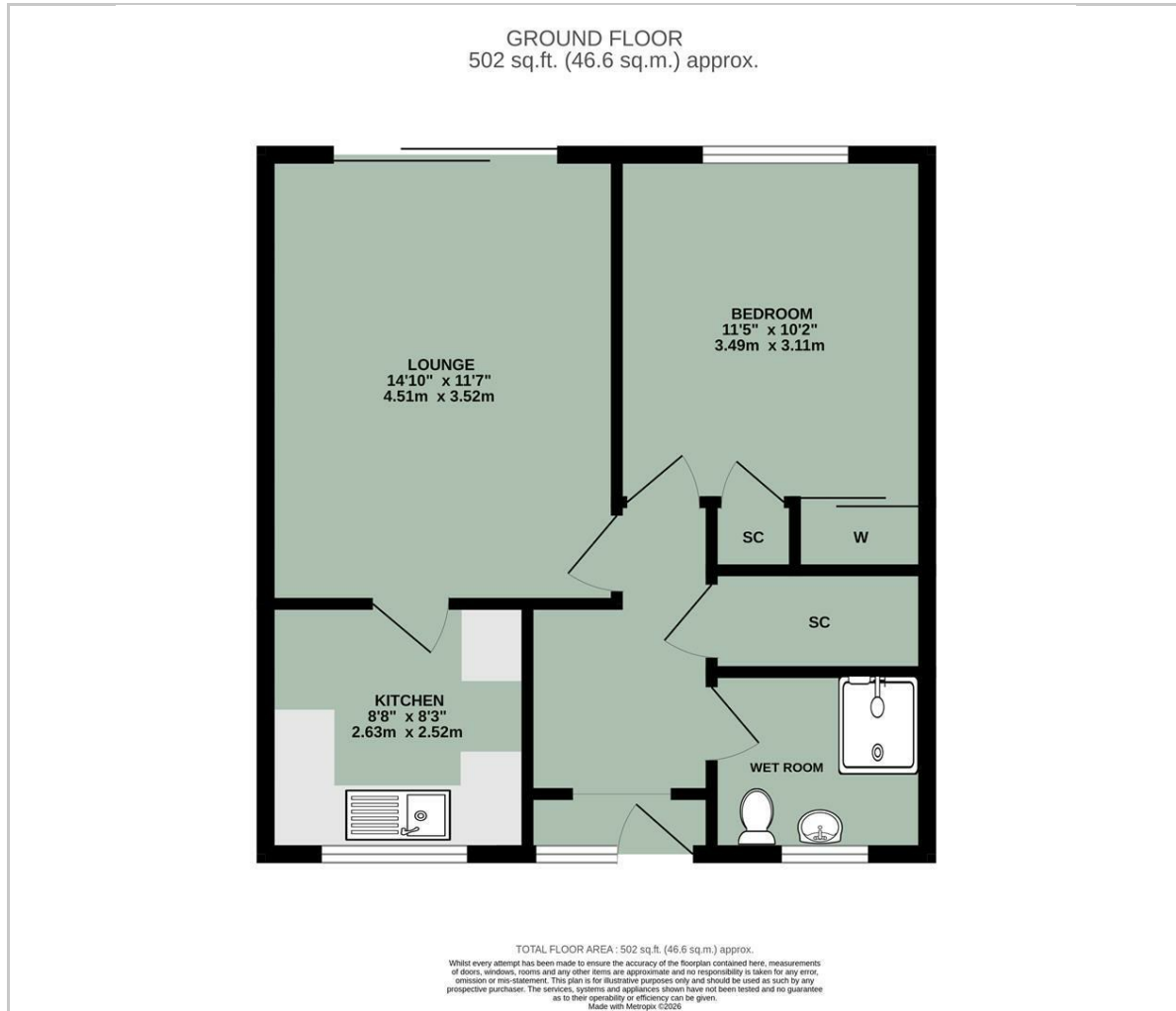


- OFFERED WITH NO ONWARD CHAIN
- BUNGALOW - END TERRACE
- WEST FACING GARDEN
- GREAT LOCATION WITHIN A PRIVATE CLOSE
- ALLOCATED PARKING FOR ONE VEHICLE
- SHORT DISTANCE TO VILLAGE SHOP

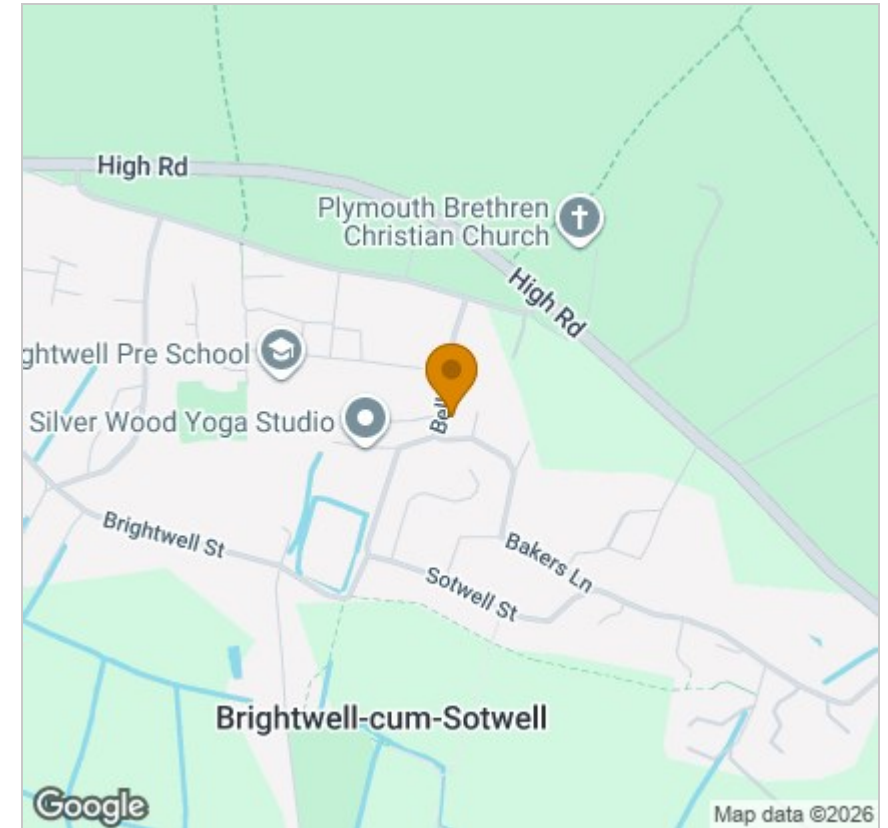


Energy Efficiency Graph

## Floor Plan



## Area Map



## Viewing

Please contact our In House Sales & Lettings Office on 01491 839999 opt.1 if you wish to arrange a viewing appointment for this property or require further information.

These particulars, whilst believed to be accurate are set out as a general outline only for guidance and do not constitute any part of an offer or contract. Intending purchasers should not rely on them as statements of representation of fact, but must satisfy themselves by inspection or otherwise as to their accuracy. No person in this firm's employment has the authority to make or give any representation or warranty in respect of the property.

28 St Martins Street, Wallingford, Oxfordshire, OX10 0AL  
Tel: 01491 839999 opt.1 Email: [sales@inhouseestateagents.co.uk](mailto:sales@inhouseestateagents.co.uk) [www.inhouseestateagents.co.uk](http://www.inhouseestateagents.co.uk)