



BRITISH  
PROPERTY  
AWARDS

2025

★★★★★

GOLD WINNER

ESTATE AGENT  
IN DEREHAM



**homeworks**  
estate agent



54 Swaffham Road  
Dereham, NR19 2DL

☎ (01362) 65 44 44  
✉ sales@homeworks-uk.com  
🌐 www.homeworks-uk.com

# Yeats Way, Dereham, NR19 2GX

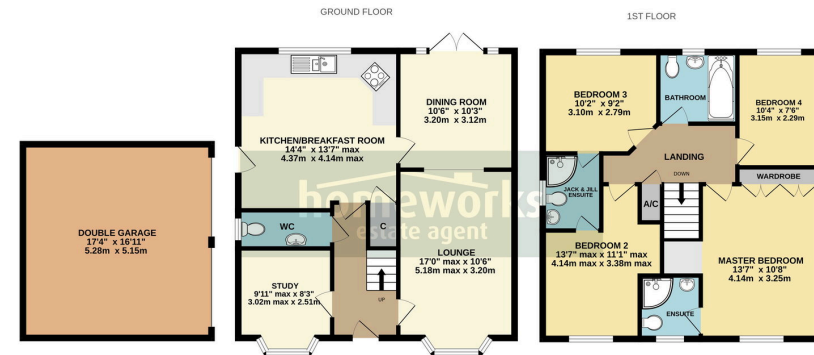
£350,000

🛏 4 🚿 2 🚗 3



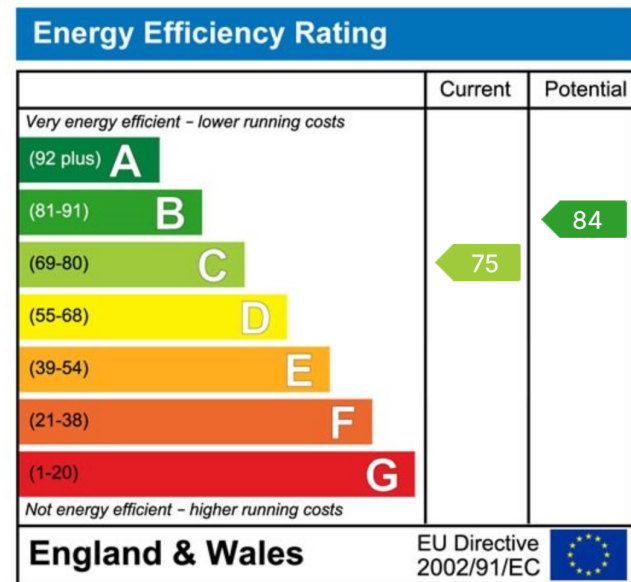
- **\*\* WELL PRESENTED WITH NO ONWARD CHAIN \*\***
- **LOUNGE, DINING ROOM & STUDY**
- **DOWNSTAIRS WC**
- **FAMILY BATHROOM**
- **DETACHED DOUBLE GARAGE**
- **FOUR DOUBLE BEDROOM DETACHED FAMILY HOME**
- **14'4 X 13'7 KITCHEN / BREAKFAST ROOM**
- **MASTER WITH EN-SUITE PLUS FURTHER JACK & JILL EN-SUITE TO BEDROOMS 2 & 3**
- **PRIVATE REAR GARDEN**
- **LOVELY SETTING ON EDGE OF DEVELOPMENT**





Whilst every attempt has been made to ensure the accuracy of the floorplan contained here, measurements of doors, windows, rooms and any other items are approximate and no responsibility is taken for any error, omission or mis-statement. This plan is for illustrative purposes only and should be used as such by any prospective purchaser. The services, systems and appliances shown have not been tested and no guarantee as to their operability or efficiency can be given. Made with Merge3D ©2020

**\*\* WELL PRESENTED WITH NO ONWARD CHAIN \*\* FOUR DOUBLE BEDROOM DETACHED FAMILY HOME | LOUNGE | DINING ROOM | STUDY | 14'4 X 13'7 KITCHEN / BREAKFAST ROOM | WC | MASTER WITH EN-SUITE | JACK & JILL EN-SUITE TO BEDROOMS 2 & 3, FAMILY BATHROOM | PRIVATE REAR GARDEN & DETACHED DOUBLE GARAGE | LOVELY SETTING ON EDGE OF DEVELOPMENT! CALL US TODAY.**



C AMOS MNAEA Managing Director  
VAT no. 185 328 683

