

**Bryant Road, Rochester, ME2 3EP**

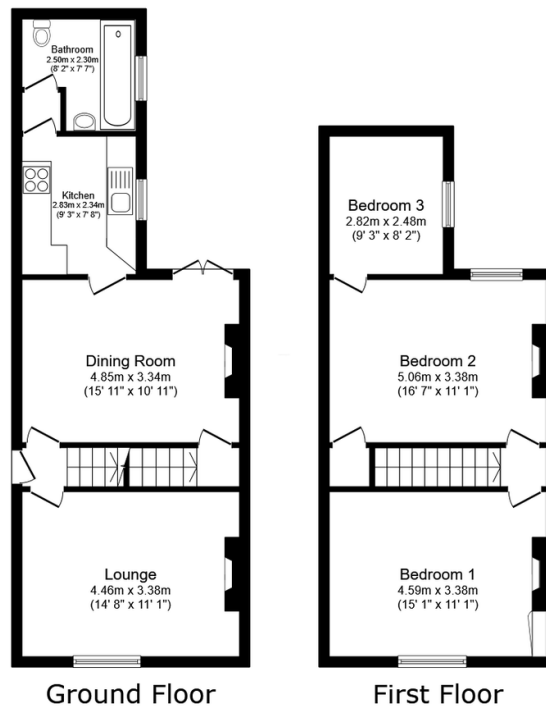
Guide Price £280,000 - £300,000



**CALL TO BOOK YOUR VIEWING** Guide £280,000 - £300,000. If you are looking for your first home this three bedroom Victorian end of terrace home located within walking distance to the Strood town centre and train station could certainly tick the boxes. Offering bundles of character features, spacious rooms and a beautiful rear garden we cant imagine it will be available for long. QUOTE REF AP0490

## Key Features

- Three Bedroom End Of Terrace Victorian Home Seperate Lounge And Dining Room
- Character Features Throughout
- Downstairs Bathroom
- Walking Distance To The Town Centre and Train Station
- Easy Access To The A2/M2
- Generous Rear Garden
- Ideal First Time Buy
- Tenure Freehold/Council Tax Band B
- QUOTE REF AP0490



Total floor area: 88.2 sq.m. (949 sq.ft.)

This floor plan is for illustrative purposes only. It is not drawn to scale. Any measurements, floor areas (including any total floor area), openings and orientations are approximate. No details are guaranteed, they cannot be relied upon for any purpose and do not form any part of any agreement. No liability is taken for any error, omission or misstatement. A party must rely upon its own inspection(s). Powered by [www.Propertybox.io](http://www.Propertybox.io)