



Ronver Road, SE12  
£419,000



## Ronver Road, SE12

Situated on a quiet residential street, this three bedroom mid-terrace house offers excellent potential for buyers looking to modernise and make a home their own. The property features a spacious through lounge and dining area, a separate kitchen, and a ground floor bathroom. Upstairs, there are three well-proportioned bedrooms. To the rear, there is a private, enclosed garden offering a quiet outdoor space. Offered with no onward chain, this is an ideal opportunity for buyers or investors looking for a project in a well-connected location.

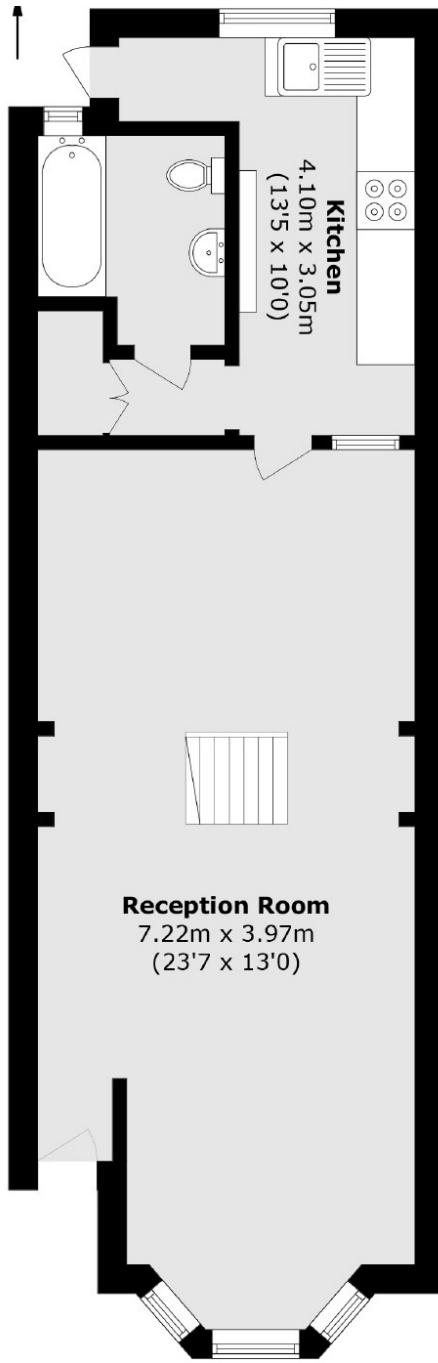
Ronver road is 0.6 miles away from Lee station, Offering direct links into London Bridge, Waterloo East, Cannon Street & Charing Cross. Changes are possible at Lewisham for the DLR and New Cross for the East London line. Within the immediate area there is a variety of local shops. You are also within walking distance to Northbrook Park. Further into Lee there are some locally renowned restaurants and pubs, as well as the wonderful Manor House Gardens.

### Features

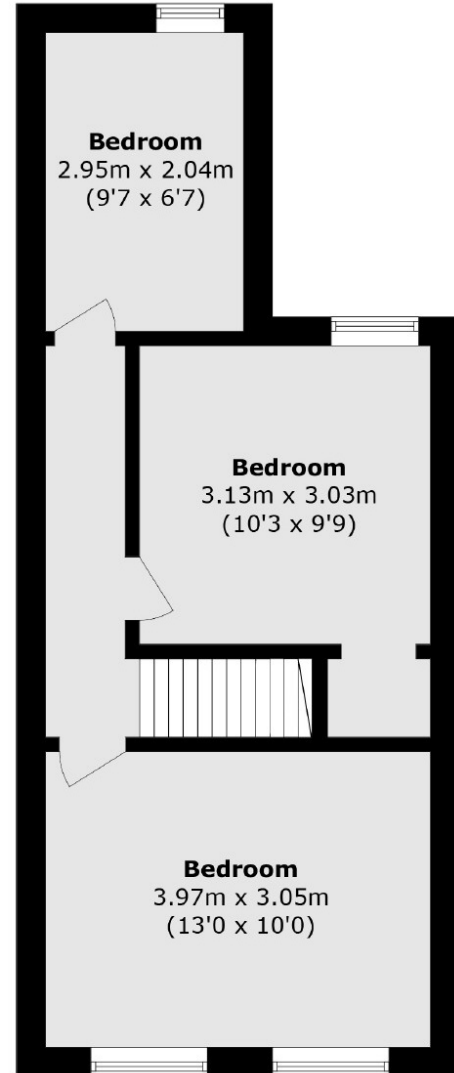
- No Upward Chain
- Mid-Terraced
- Three Bedrooms
- Through Lounge/Diner
- Enclosed Garden
- In Need Of Modernisation



Ronver Road,  
London, SE12



**Ground Floor**



**First Floor**