



# Cotleigh Road

West Hampstead, NW6

£2,300 per month  
(£530.77 per week)

\*VIDEO TOUR AVAILABLE\*. A delightful top (3rd) floor apartment with its entrance on the 2nd floor boasting wood floors and direct access to a private terrace in this excellent location in West Hampstead. Sole Agent.

**CHESTERTONS**



# Cotleigh Road

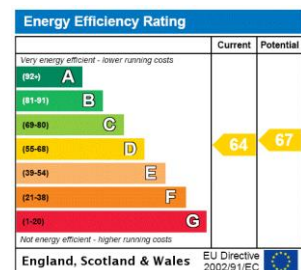
## West Hampstead, NW6

- A Delightful Top (3rd) Floor Apartment in Period Building
- 1 Bedroom, 1 Bathroom, Reception, Open Plan Kitchen
- Private Terrace, Wood Floors
- Situated in Excellent Location in West Hampstead, Walking Distance to the Shops and Restaurants



\*VIDEO TOUR AVAILABLE\*. A delightful top (3rd) floor apartment with its entrance on the 2nd floor boasting wood floors and direct access to a private terrace. The property is situated in this excellent location in West Hampstead within walking distance to the shops and restaurants. Accommodation comprises reception room, open plan kitchen, double bedroom with wardrobes and direct access to the terrace, bathroom. Sole Agent.

**Minimum Term:** 12 months  
**Deposit Required:** £2,653.85  
**Local Authority:** London Borough Of Camden  
**Council Tax Band:** C  
**EPC Rating:** D  
**Unfurnished**



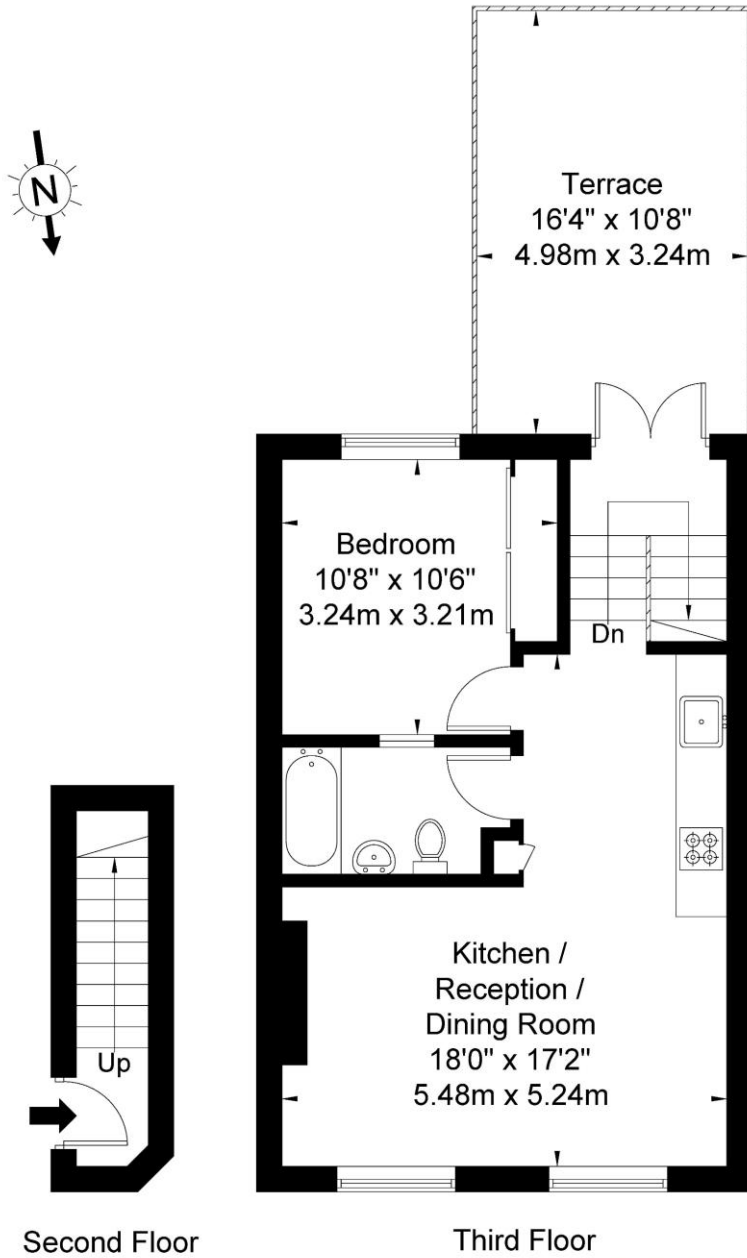
### Chestertons Hampstead Lettings

55-56 Hampstead High Street  
 Hampstead  
 London  
 NW3 1QH  
 hampsteadlettingsusers@chestertons.co.uk  
 02077941125  
 chestertons.co.uk

Additional tenant charges apply (fees apply to non-AST tenancies only)  
 Tenancy Agreement Fee: £300  
 References per Tenant/Guarantor: £60  
 Inventory check (approx. £100 – £250 inc. VAT)  
 chestertons.co.uk/property-to-rent/applicable-fees

# Cotleigh Road NW6 2NL

Approx Gross Internal Area = 47.3 sq m / 509 sq ft



Ref

Copyright **BLEU  
PLAN**

The Floor plan is not to scale and measurements and areas shown are approximate and therefore should be used for illustrative purposes only. The plan has been prepared in accordance with the RICS code of Measuring Practice and whilst we have confidence in the information produced it must not be relied on. If there is any aspect of particular importance, you should carry out or commission your own inspection of the property.

Copyright @ BLEUPLAN

