

An aerial photograph of a stone house with a grey roof and a chimney, situated in a lush green valley. The house is surrounded by a dense line of trees, some of which are bare, suggesting a late autumn or winter setting. The valley is filled with vibrant green grass, and a fence line runs across the foreground. In the background, rolling hills and a clear blue sky are visible. The overall scene is peaceful and scenic.

Symonds  
& Sampson

# Toller Fratrum

Dorchester, Dorset

# Trunks Cottage

Toller Fratrum, Dorchester,  
Dorset, DT2 0EW

An enchanting three bedroom detached cottage tucked away at the end of a peaceful lane, offering charming character, beautiful gardens, and far-reaching countryside views.



- Charming detached cottage in a peaceful setting
  - Three well-proportioned bedrooms
  - Two reception rooms
- Wrap-around garden with far-reaching rural views
  - Gated driveway parking
- Tucked away at the end of a no-through lane
  - Surrounded by countryside
  - No forward chain

Guide Price **£500,000**

Freehold

Dorchester Sales  
01305 261008

[dorchester@symondsandsampson.co.uk](mailto:dorchester@symondsandsampson.co.uk)



## THE PROPERTY

Tucked away at the end of a peaceful no-through lane in the idyllic hamlet of Toller Fratrum, Trunks Cottage is a truly enchanting home, nestled privately amongst mature trees and surrounded by unspoilt countryside. Having remained in the same ownership for over 40 years, this much-loved cottage presents a rare and special opportunity to acquire a home of such charm, character, and seclusion.

From the moment you arrive, there is an undeniable sense of tranquillity. The cottage itself is beautifully adorned with cascading wisteria, enhancing its quintessential English country appeal and setting the tone for what lies beyond.

The ground floor offers a wonderfully sociable and free-flowing layout. A delightful dual-aspect sitting room, complete with a wood-burning stove, provides a warm and inviting heart to the home, with natural light pouring in from both sides. This space opens seamlessly into a dual-aspect dining room.

Terracotta tiled flooring runs throughout these principal rooms, continuing into the charming kitchen/breakfast room, which enjoys a lovely outlook over the garden. Double doors lead directly outside, effortlessly blending indoor and outdoor living and making the most of the peaceful surroundings. Complementing the ground floor accommodation is a practical utility room and a shower room.

Upstairs, the first floor has three well-proportioned bedrooms and a family bathroom. Each room enjoys its own unique outlook, whether across the quiet village lane, over the beautifully tended gardens, or out towards the rolling countryside beyond, ensuring that every window captures a different and equally captivating view.



## OUTSIDE

The gardens are a particular highlight of Trunks Cottage. Mainly laid to lawn, they gently wrap around the property, offering both privacy and space, while a terrace sits perfectly positioned adjoining the kitchen, ideal for al fresco dining and summer evenings. The grounds are framed by mature trees and boast far-reaching views across the surrounding countryside, creating a truly picturesque setting.

Further benefits include a gated driveway providing off-road parking, along with a useful outbuilding.

Trunks Cottage is a rare gem, an utterly charming and characterful home in a peaceful setting, offering a lifestyle defined by countryside beauty, privacy, and timeless appeal.





## SITUATION

Toller Fratrum is a charming and unspoilt hamlet nestled in the rolling Dorset countryside, offering a peaceful rural lifestyle while remaining within easy reach of nearby towns and the Jurassic Coast. Surrounded by open fields, scenic walking routes, and picturesque farmland, it is ideal for those seeking tranquillity and natural beauty. The immediate locality lies within a designated Area of Outstanding Natural Beauty, with a network of footpaths and bridleways providing excellent opportunities for walking and riding.

The nearby village of Maiden Newton, approximately 1.5 miles away, offers a range of everyday amenities including local shops, a primary school, doctor's surgery, petrol station/store, public house, and a railway station on the Dorchester-Bristol line.

The picturesque town of Beaminster, known for its historic square and selection of independent shops and boutiques, lies around 10 miles to the west. Both the county town of Dorchester and the vibrant market town of Bridport are within approximately 12 miles. Dorchester provides a wider range of facilities, including mainline rail services to London Waterloo and the Dorset County Hospital.

## DIRECTIONS

what3words:///blurr.balloned.tickling

## SERVICES

Mains electricity. Private spring. Private drainage. Night storage heating and wood burner.

Broadband - Standard speed available

Mobile - There is mobile coverage in the area, please refer to Ofcom's website for more details. (<https://www.ofcom.org.uk>)

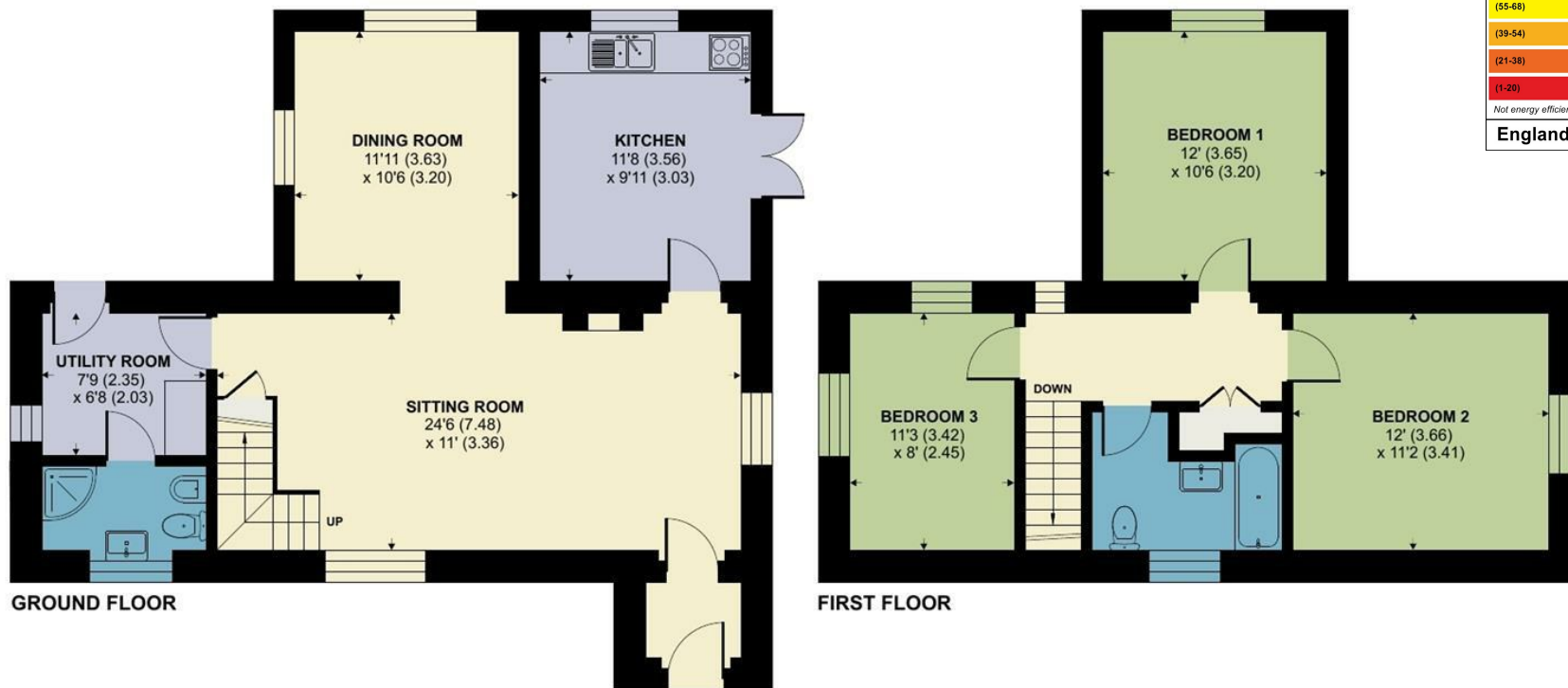
Council Tax Band: E (Dorset Council - 01305 251010)



# Toller Fratrum, Dorchester

Approximate Area = 1167 sq ft / 108.4 sq m

For identification only - Not to scale



Energy Efficiency Rating		Current	Potential
Very energy efficient - lower running costs			
(92 plus) <b>A</b>			<b>86</b>
(81-91) <b>B</b>			
(69-80) <b>C</b>			
(55-68) <b>D</b>			
(39-54) <b>E</b>			
(21-38) <b>F</b>		<b>24</b>	
(1-20) <b>G</b>			
Not energy efficient - higher running costs			
<b>England &amp; Wales</b>		EU Directive 2002/91/EC	



Floor plan produced in accordance with RICS Property Measurement 2nd Edition, Incorporating International Property Measurement Standards (IPMS2 Residential). © nitchecom 2026. Produced for Symonds & Sampson. REF: 1425278



Dorchester/ATR/16.04.2026



01305 261008

dorchester@symondsandsampson.co.uk  
Symonds & Sampson LLP  
9 Weymouth Avenue, Brewery Square,  
Dorchester, Dorset DT1 1QR



Important Notice: Symonds & Sampson LLP and their Clients give notice that: 1. They have no authority to make or give any representations or warranties in relation to the property. These particulars do not form part of any offer or contract and must not be relied upon as statements or representations of fact. 2. Any areas, measurements or distances are approximate. The text, photographs and plans are for guidance only and are not necessarily comprehensive. It should not be assumed that the properties have all necessary planning, building regulation or other consents and Symonds and Sampson LLP have not tested any services, equipment of facilities. 3. We have not made any investigation into the existence or otherwise of any issues concerning pollution of the land, air or water contamination and the purchaser is responsible for making his/her own enquiries in this regard. 4. The property is sold subject to and with the benefit of all existing wayleaves, easements and rights of way whether public or private, specifically mentioned or not. The vendors shall not be required to define any such rights, privileges or advantages.

**SALES | LETTINGS | AUCTIONS | FARMS & LAND | COMMERCIAL | NEW HOMES | PLANNING & DEVELOPMENT**

Symonds  
& Sampson

