



## St. George Wharf, SW8

£2,800 Per calendar month

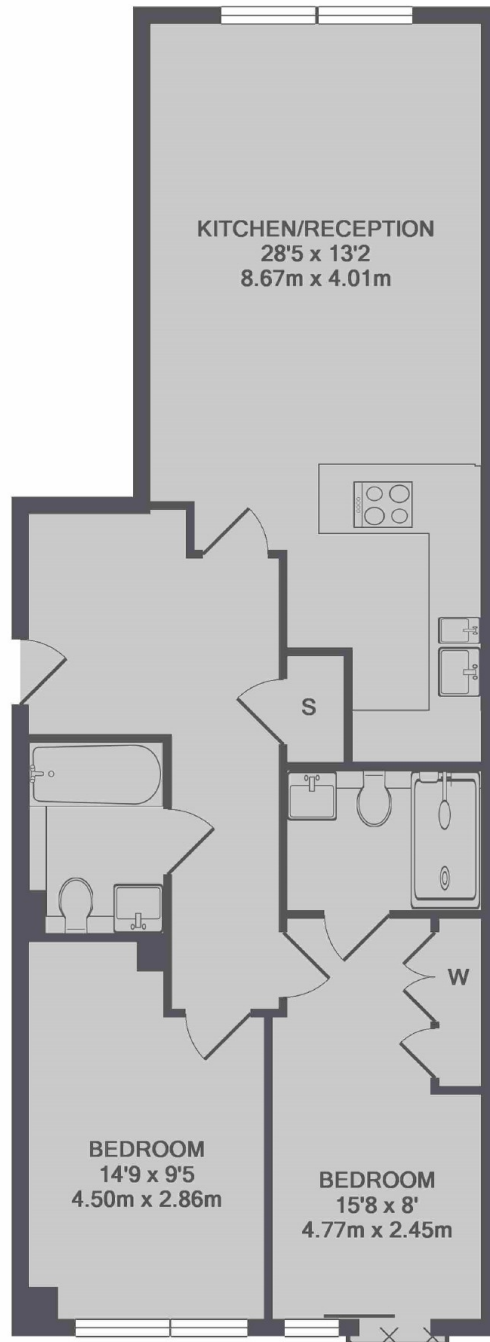
A two double bedroom two bathroom apartment in the popular St George Wharf development. The property comprises of a spacious open plan kitchen, master bedroom with en suite, further double bedroom and family bathroom.

Situated on the River Thames with a variety of bars, restaurants and coffee shops. Ideal for transport links from Vauxhall and just a short walk across Vauxhall Bridge into Pimlico.

### Features

- 24Hr Concierge Service
- Open Plan Kitchen
- Large Reception Area
- Ensuite Bathroom
- Neutrally Decorated
- Two Double Bedrooms

# St. George Wharf, London, SW8



TOTAL APPROX. FLOOR AREA 797 SQ.FT. (74.0 SQ.M.)