



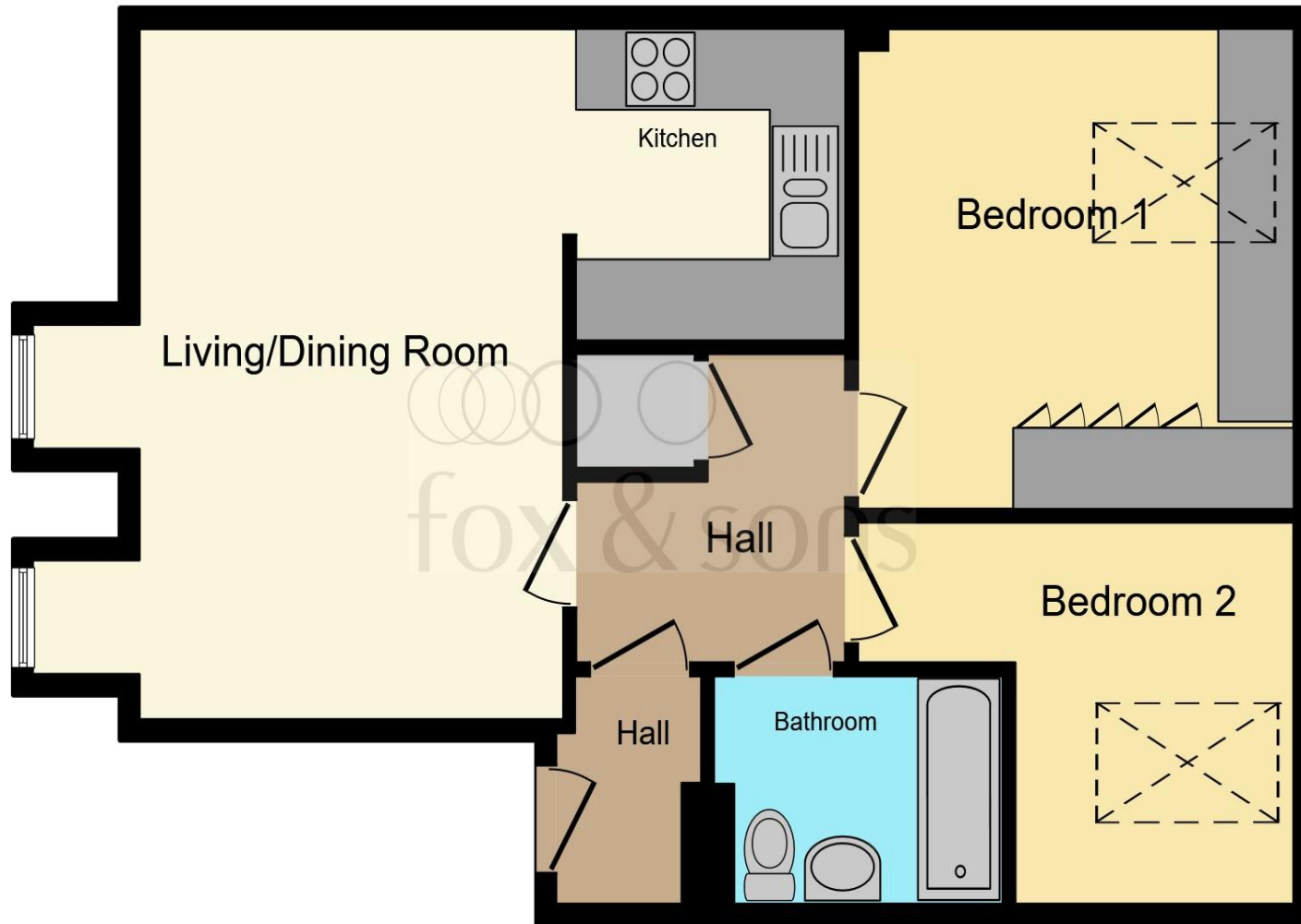
Bay View Mews West Cliff Road, Bournemouth BH2 5JA

welcome to

Bay View Mews West Cliff Road, Bournemouth

A modern top-floor two-bedroom apartment featuring a bright open-plan living space, fitted storage, loft access and allocated parking. Residents benefit from access to well-maintained communal gardens with private gated access to the clifftop and coastal path.





Kitchen

7' 1" x 7' 5" (2.16m x 2.26m)

Lounge Diner

17' x 10' 9" (5.18m x 3.28m)

Bedroom 1

11' 6" x 11' 3" (3.51m x 3.43m)

Bedroom 2

9' 2" x 7' 2" (2.79m x 2.18m)

Bathroom

This floor plan is for illustrative purposes only. It is not drawn to scale. Any measurements, floor areas (including any total floor area), openings and orientation are approximate. No details are guaranteed, they cannot be relied upon for any purpose and they do not form part of any agreement. No liability is taken for any error, omission or misstatement. A party must rely upon its own inspection(s). Powered by www.focalagent.com

welcome to

Bay View Mews West Cliff Road, Bournemouth

- Modern top-floor apartment
- Bright open-plan kitchen/living space with integrated appliances
- Two bedrooms: main double with extensive fitted storage and versatile single bedroom
- Access to communal cliff-top gardens with private gated access
- Allocated off-road parking space

Tenure: Leasehold EPC Rating: C

Council Tax Band: D Service Charge: 1850.00

Ground Rent: 120.00

This is a Leasehold property with details as follows; Term of Lease 125 years from 01 Jan 2003. Should you require further information please contact the branch. Please Note additional fees could be incurred for items such as Leasehold packs.

£220,000



Please note the marker reflects the postcode not the actual property

view this property online fox-and-sons.co.uk/Property/WTN111031



Property Ref:
WTN111031 - 0002

1. MONEY LAUNDERING REGULATIONS Intending purchasers will be asked to produce identification documentation at a later stage and we would ask for your co-operation in order that there is no delay in agreeing the sale. 2. These particulars do not constitute part or all of an offer or contract. 3. The measurements indicated are supplied for guidance only and as such must be considered incorrect. Potential buyers are advised to recheck measurements before committing to any expense. 4. We have not tested any apparatus, equipment, fixtures or services and it is in the buyers interest to check the working condition of any appliances. 5. Where an EPC, or a Home Report (Scotland only) is held for this property, it is available for inspection at the branch by appointment. If you require a printed version of a Home Report, you will need to pay a reasonable production charge reflecting printing and other costs. 6. We are not able to offer an opinion either written or verbal on the content of these reports and this must be obtained from your legal representative. 7. Whilst we take care in preparing these reports, a buyer should ensure that his/her legal representative confirms as soon as possible all matters relating to title including the extent and boundaries of the property and other important matters before exchange of contracts.


fox & sons



01202 512606



Winton@fox-and-sons.co.uk



367 Wimborne Road, BOURNEMOUTH, Dorset,
BH9 2AQ



fox-and-sons.co.uk