



Falcon

01752 600444

12 Warleigh Avenue

Keyham, Plymouth, PL2 1NW

Guide Price £210,000 - £220,000





In Brief

Mid terraced Chain free property

Reception Rooms	3 Bedrooms	Parking	On street Parking
Bedrooms	Living room & Dining room	Council Tax	B
Heating	Gas central Heating		
Area	1513 Sq Ft		
Tenure	Freehold		

Description

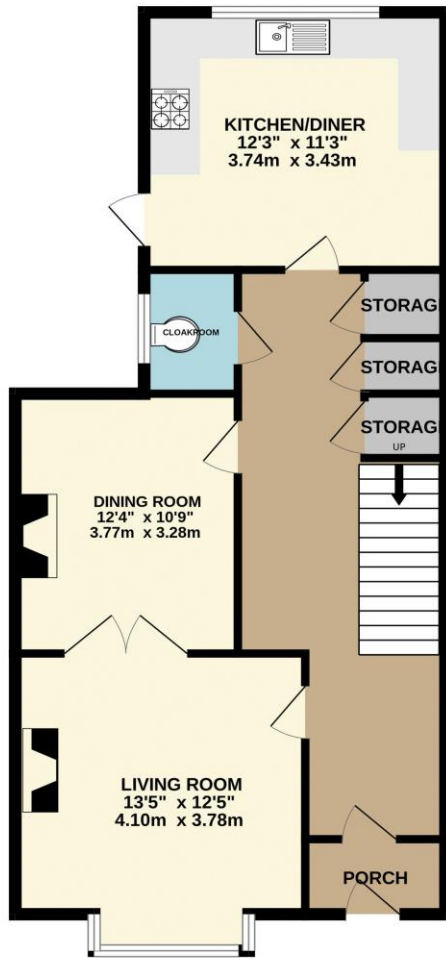
This beautifully presented three-bedroom mid-terrace property is offered to the market chain-free and would make an ideal family home or investment opportunity. The accommodation briefly comprises a spacious and inviting living room, complete with a charming feature fireplace, creating a cosy focal point. Double doors lead through to the dining area, which in turn provides access to the enclosed courtyard garden—perfect for entertaining or relaxing outdoors. The ground floor further benefits from a convenient downstairs WC and a well-proportioned kitchen/dining room. To the first floor, the property boasts an impressive main bedroom, generously sized and flooded with natural light from two front-facing windows. There is a further double bedroom, a family bathroom fitted with a shower, WC, and wash hand basin, and an additional well-sized bedroom currently utilised as a home office. Situated at the end of the street, the property enjoys excellent access to on-street parking. It is ideally located close to local schools, Plymouth Dockyard and Naval Base, and offers fantastic transport links to Plymouth City Centre.

Need A Mortgage?

Don't pay more than you need to for your mortgage advice:
ours is only £195 paid when you move!

Floor Plans

GROUND FLOOR
749 sq.ft. (69.5 sq.m.) approx.



1ST FLOOR
765 sq.ft. (71.0 sq.m.) approx.



TOTAL FLOOR AREA : 1513 sq.ft. (140.6 sq.m.) approx.
Made with Metroplan ©2026



Fixed Price Conveyancing

A complete solution from just £600 with No sale – No Fee



We have not tested any apparatus, equipment, fixtures and fittings or services and so cannot verify that they are connected, in working order or fit for the purpose. Neither have we had sight of the legal documents to verify the Freehold or Leasehold status of any property; or sight of any consents, including Planning Permissions, building Regulations and Breaches of Covenants that may be required for alterations to the property. A buyer is advised to obtain verification from their Solicitor and/or Surveyor. Items shown in photographs are NOT included unless specifically mentioned within the Sales Particulars. Any floor plans on these details are not drawn to scale and are intended for guidance only

Falcon Property is an Introducer to Bradleys Financial Management Ltd. They are appointed representatives of Sesame Ltd who are authorised and regulated by the Financial Services Authority. Bradleys do not charge for mortgage advice, however a fee paying option is available. Typical fee is £195. Bradleys Financial Management: 16 Mannamead Road, Mutley, Plymouth, PL4 7AA

Your home may be repossessed if you do not keep up repayments on your mortgage.

