



ROLAND WAY, SW7

£3,250,000

Freehold
Three bedrooms
Four bathrooms
Roof terrace
Fabulous condition
Energy rating d

@marshandparsons
marshandparsons.co.uk

MARSH &
PARSONS



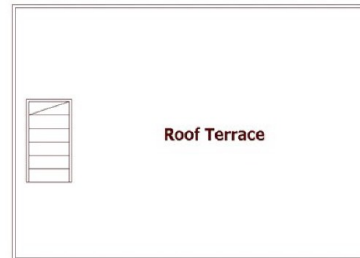
ABOUT THE PROPERTY

An exceptional mews house in the heart of South Kensington. This house has been designed and finished to an exceptional standard. This mews house has a bright and spacious ground floor reception and a separate kitchen with a fantastic cooking space and its own self-contained TV area. The master bedroom with en suite shower room and separate dressing room occupies the top floor of the house benefitting from access to a decked roof terrace. Accompanied by two further double bedrooms with a bathroom and shower room.

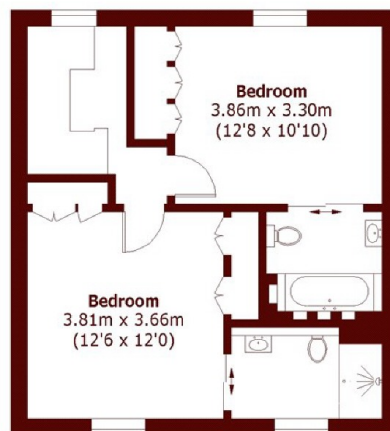
Situated in this desirable private mews, the property also comes with a parking space. Roland Way offers convenient access to excellent shops and eateries.



STEP INSIDE ROLAND WAY



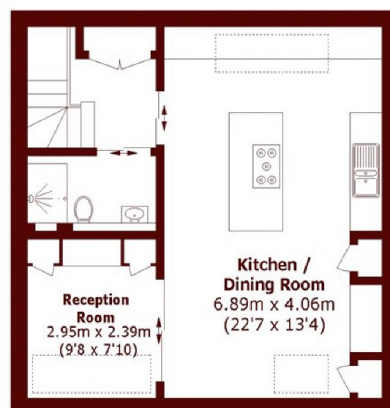
Third Floor



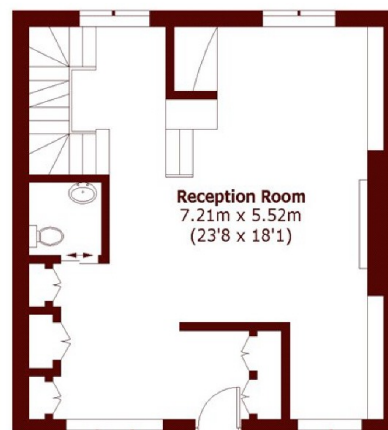
First Floor



Second Floor



Basement



Ground Floor

Total area (approx.): 186.8 sq. m (2,010.8 sq. ft)
(Including Basement)
Roof Terrace: 30.5 sq. m (328.3 sq. ft)

South Kensington
020 7590 0800

Energy Rating: D We aim to make our particulars both accurate and reliable. However, they are not guaranteed; nor do they form part of an offer or contract. If you require clarification on any points then please contact us, especially if you're traveling some distance to view. Please note that appliances and heating systems have not been tested and therefore no warranties can be given as to their good working order

MARSH &
PARSONS