



Towngate, Thurlstone, Sheffield, S36 9RH

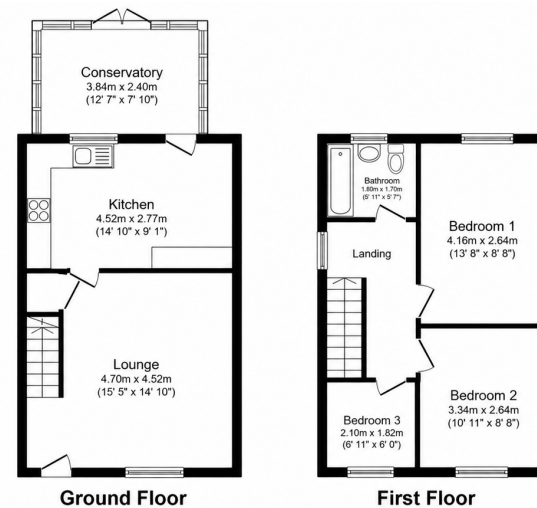
£200,000

🛏️ 3 🚿 1 🚗 2



- No Upwards Chain
- Southwest Facing Rear Garden
- Off Road Parking
- 3 Bedrooms
- Lounge & Breakfast / Dining Kitchen
- Sought After Pennine Village
- Open Countryside on the Doorstep
- Highly Regarded Schools
- Local Amenities & Access to Penistone
- M1 Within a 15 Minute Drive





Thurstone

Total floor area 78.9 sq.m. (849 sq.ft.) approx

This floor plan is for illustrative purposes only. It is not drawn to scale. Any measurements, floor areas (including any total floor area), openings and orientation are approximate. No details are guaranteed, they cannot be relied upon for any purpose and they do not form part of any agreement. No liability is taken for any error, omission or misstatement. A party must rely upon its own inspection(s).
Plan produced for Sold.co.uk. Powered by www.localagent.com

Offered with NO UPWARDS CHAIN, a three bedroom semi-detached home which occupies a delightful village position, glorious open countryside on the doorstep, local services in abundance and only a short drive from the popular Pennine market town of Penistone.

Score	Energy rating	Current	Potential
92+	A		108 A
81-91	B		
69-80	C		
55-68	D	59 D	
39-54	E		
21-38	F		
1-20	G		



Lancasters Property Services
 Property Professionals For Over 230 Years
 Independent Estate Agents, Surveyors & Property Management
 Email: mail@lancasters-property.co.uk
 In association with Lancasters Property Management Ltd.

Lancaster House, 20 Market St.
 Penistone S36 6BZ
 Tel: (01226) 763307