



London Road, SW16

£1,600 Per calendar month

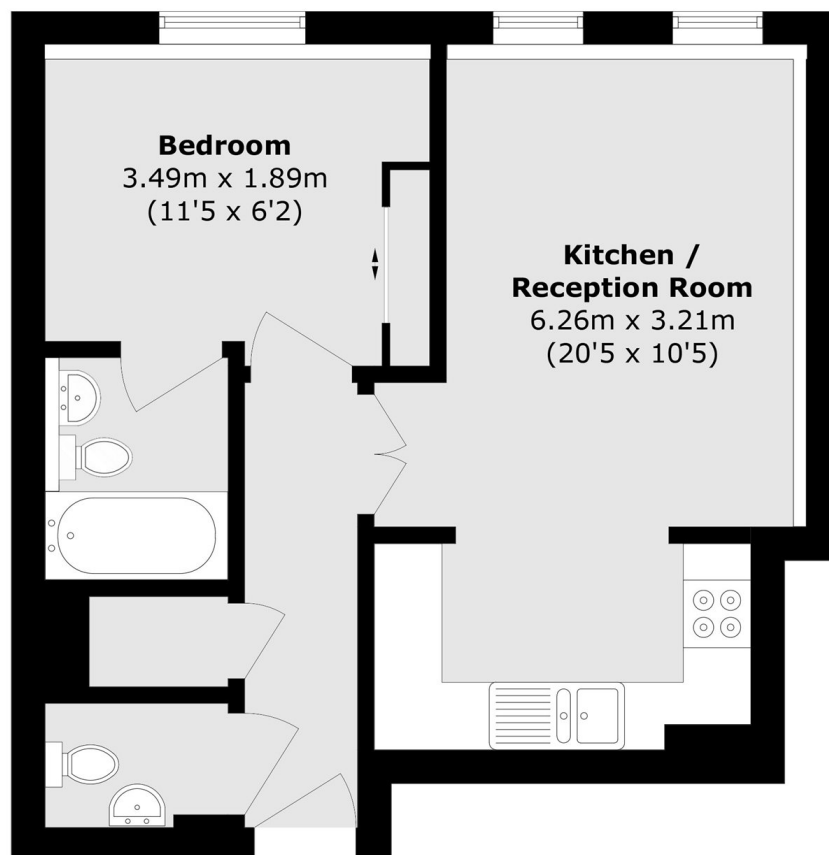
A well presented, one bedroom apartment with on site gym and concierge, located just 0.6 miles to Norbury Station. Benefits include a concierge service, a well-maintained communal garden, and access to a roof terrace.

Solent Court is set just off Norbury town centre. The nearest mainline station, Norbury, is only 0.6 Miles away, offering regular rail services to London Bridge and London Victoria. The area is well served by highly regarded schools, with Norbury Park and Streatham Common also nearby, providing excellent recreational facilities.

Features

- One bed apartment
- Gym & concierge
- 0.6 miles to station
- Communal gardens & terrace
- Modern finish

London Road,
London, SW16



Total area (approx.): 43.2 sq. m (465.0 sq. ft)