



CAMPDEN GROVE, W8

£950,000

Two Bedrooms
One Bathroom
High Ceilings
Wooden Floors
First Floor
Leasehold

@marshandparsons
marshandparsons.co.uk

MARSH &
PARSONS



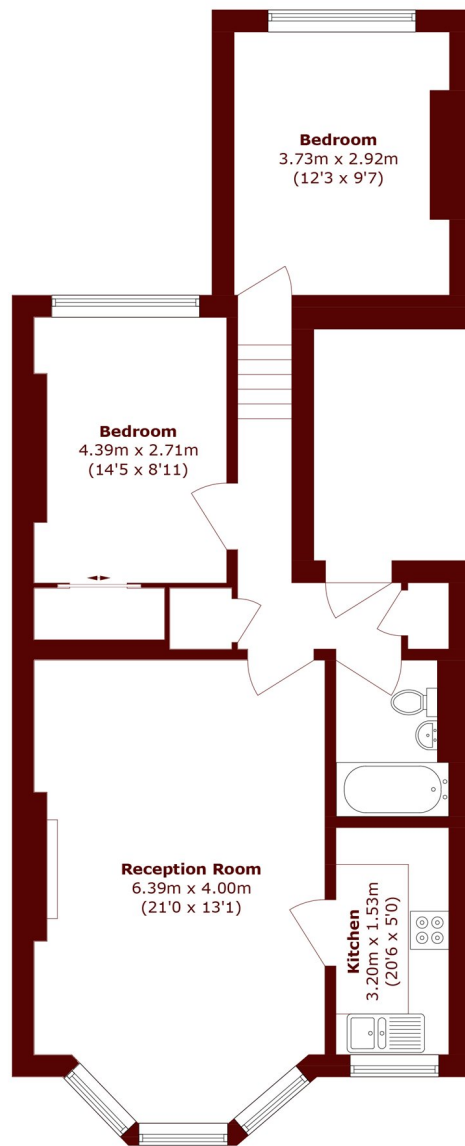
ABOUT THE PROPERTY

Set on the first floor of an elegant Victorian conversion, this apartment provides two generous double bedrooms. The main living space is light and well-proportioned, featuring high ceilings, wooden flooring and expansive windows, with comfortable space for both seating and dining. A separate fitted kitchen and a recently refurbished bathroom complete the layout, making this a strong option for anyone seeking period character in a highly desirable location.

Campden Grove is a lovely quiet residential street close to the boutique cafes and antique shops of Kensington Church Street as well as the amenities of either Notting Hill Gate (Central, Circle and District tube lines) or



STEP INSIDE CAMPDEN GROVE



First Floor

Total area (approx.): 61.6 sq. m (663.0 sq. ft)

Kensington
020 7368 4450

Energy Rating: E We aim to make our particulars both accurate and reliable. However, they are not guaranteed; nor do they form part of an offer or contract. If you require clarification on any points then please contact us, especially if you're traveling some distance to view. Please note that appliances and heating systems have not been tested and therefore no warranties can be given as to their good working order

**MARSH &
PARSONS**