



Gascony Avenue, NW6

£650,000

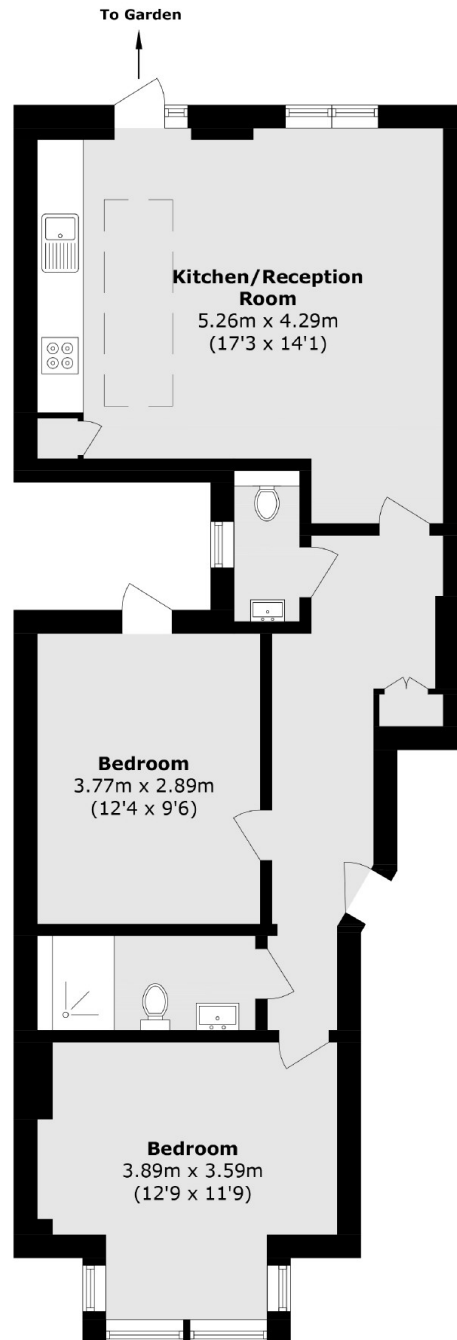
A well-proportioned two bedroom apartment situated within a charming Victorian residence. This property benefits from an open plan kitchen and reception area, direct access to a private garden, and has been comprehensively renovated throughout.

Gascony Avenue is located within easy reach of West Hampstead and Kilburn, with a wide range of restaurants, bars and shops for all occasions. Transport links are provided by the Jubilee and Bakerloo Line underground, Thameslink and Overground stations.

Features

- Two Bedrooms
- Excellent Condition
- Private Garden
- Two Bathrooms
- South Facing Garden
- Open Plan Kitchen/Reception

Gascony Avenue, London, NW6



Total area (approx.): 64 sq. m (688.8 sq. ft)