



Welwyn Drive

Salford



£350,000

# Welwyn Drive

Salford

STOP! Located on a POPULAR ESTATE with BREATHTAKING VIEWS over Swinton Golf Course is this STUNNING, EXTENDED THREE BEDROOM DETACHED FAMILY HOME! This beautifully presented property benefits from a 20FT KITCHEN DINER, contemporary three-piece family bathroom and an ensuite. Council Tax band: D

Tenure: Freehold

- Offered with NO VENDOR CHAIN
- Stunning, Extended Three Bedroom Detached Family Home
- Located on a Generous Plot on a Popular Estate, with Views over Swinton Golf Course to the Rear
- Tastefully Decorated Throughout, the Property is a Credit to its Current Owners
- Bay-Fronted Lounge and an Additional Reception Room to the Rear
- Modern 20FT Kitchen Diner and a Contemporary Three-Piece Family Bathroom
- Master Bedroom Complete with an Ensuite Bathroom
- Three Spacious Double Bedrooms
- Driveway and a Garage for Off-Road Parking
- Within Easy Access of Excellent Transport Links to Salford Quays/Media City and the City Centre



HILLS



**Porch**

**Entrance Hallway**

**Reception Room One**

11' 6" x 12' 2" (3.50m x 3.70m)

**Reception Room Two**

14' 9" x 11' 6" (4.50m x 3.50m)

**Kitchen**

20' 4" x 6' 3" (6.20m x 1.90m)

**Landing**

**Bedroom One**

11' 6" x 11' 2" (3.50m x 3.40m)

**Bedroom Two**

11' 6" x 11' 2" (3.50m x 3.40m)

**Bedroom Three**

19' 0" x 7' 3" (5.80m x 2.20m)

**En-suite**

7' 3" x 3' 3" (2.20m x 1.00m)

**Bathroom**

7' 3" x 4' 7" (2.20m x 1.40m)



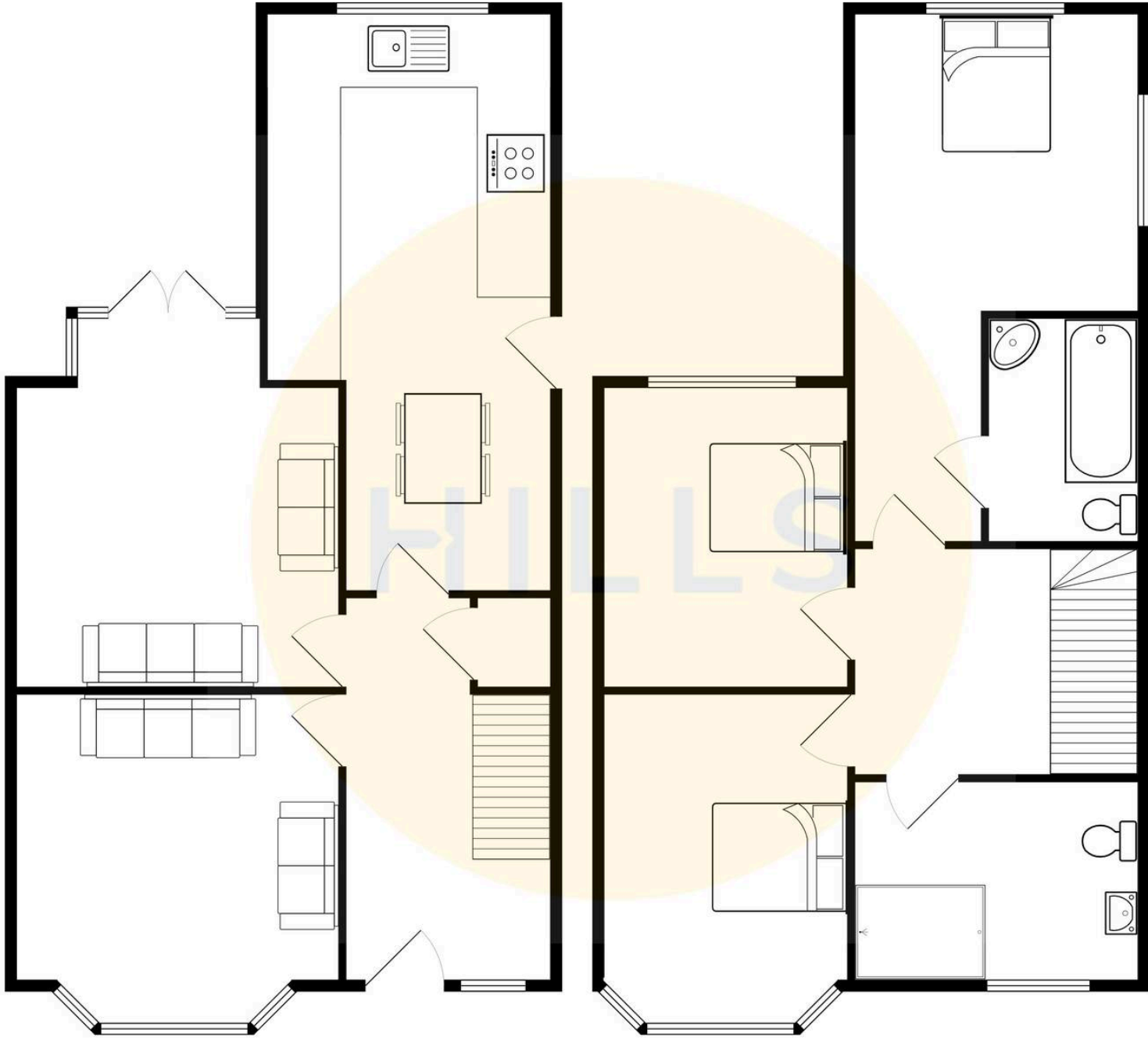
HILLS





HILLS







## Hills | Salfords Estate Agent

Hills Residential, Sentinel House Albert Street – M30 0SS

0161 707 4900

[sales@hills.agency](mailto:sales@hills.agency)

[www.hills.agency/](http://www.hills.agency/)



By law, we are required to conduct anti-money laundering checks on all potential buyers and sellers. In line with HMRC guidelines, our trusted partner, Coadjute, will securely manage these checks on our behalf. A non-refundable fee of £45 + VAT per person will apply, and Coadjute will handle the payment. Once an offer is accepted, Coadjute will send a secure link for you to complete the biometric checks. These checks must be completed before we can send the memorandum of sale to all parties. PLEASE NOTE: The Agent has not tested any equipment, fixtures, fittings or services so cannot verify that they are in working order or fit for the purpose. References to the properties tenure are based on information supplied by the seller. You are advised to check the availability of this property before travelling any distance to view. Every effort has been made to ensure these particulars are correct and not misleading but their accuracy is not guaranteed nor do they form part of any contract.