



East Sea View, Newbiggin By The Sea, NE64 6DJ

Offers in the Region of **£195,000**

Bedrooms: 3 | Bathrooms: 1 | Receptions: 2

This exceptional three-bedroom end-terrace home enjoys an enviable position overlooking the golf course, with breath taking sea views beyond, offering a truly impressive coastal lifestyle.

The home welcomes you through an entrance porch into a front-facing lounge, where a bay window floods the space with natural light and perfectly frames the outstanding panoramic outlook. To the rear, a spacious reception/dining area provides an ideal setting for both entertaining and everyday living, seamlessly complemented by a recently upgraded contemporary kitchen.

The first floor hosts three well proportioned bedrooms, including one with fitted storage, alongside a well-appointed spacious modern three-piece family bathroom.

Externally, the property continues to impress with a neatly maintained front garden, while the rear offers a private yard with additional storage, a garage, and driveway parking—a rare and valuable feature in this location.

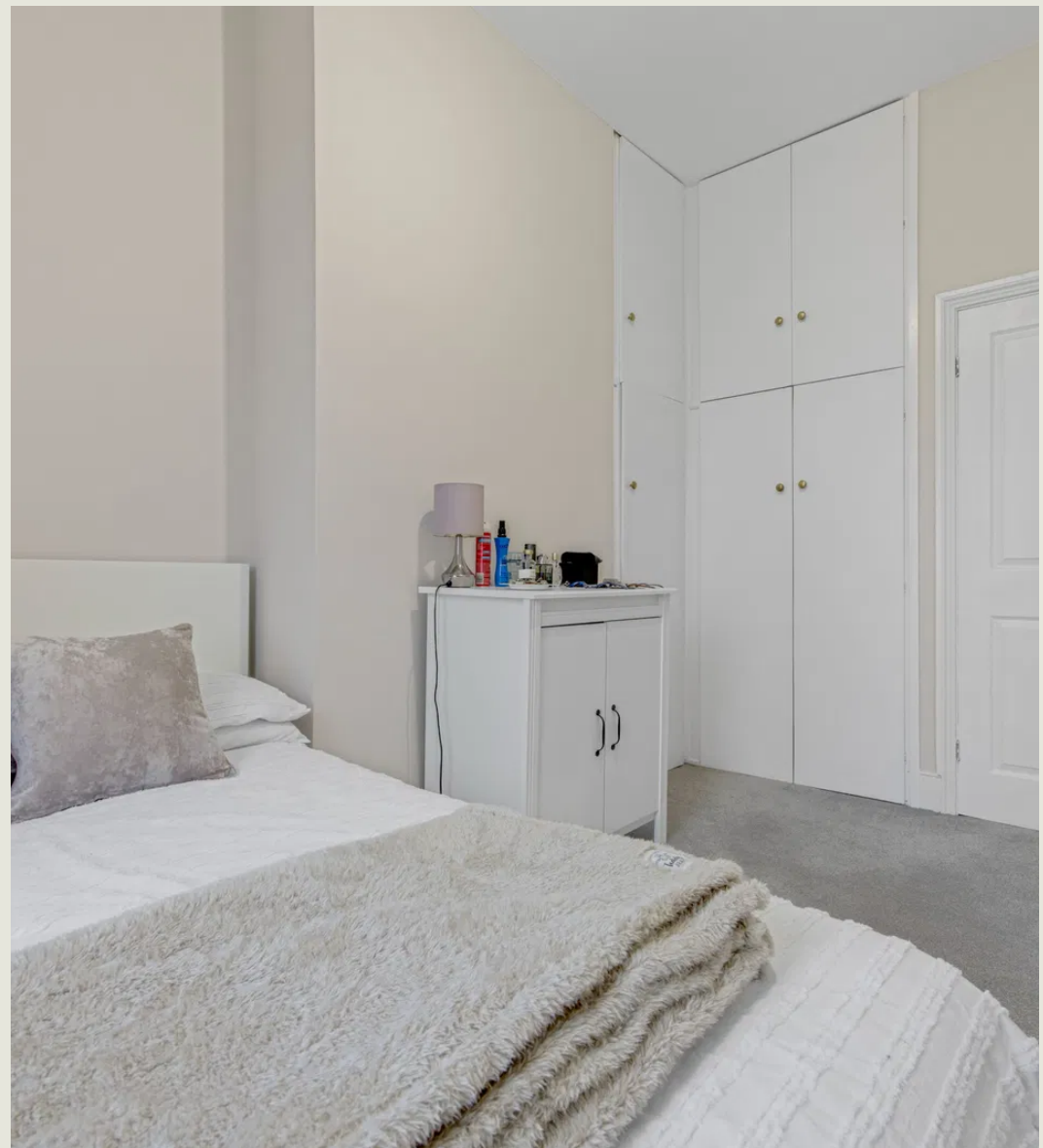
Further enhancing the appeal, the property has been fully rewired, benefits from a newly installed combi boiler, and is offered with no upper chain, ensuring a seamless and stress-free purchase.

A well presented home in a truly outstanding setting, within walking distance to local amenities, transport links and the beach.

- Three Bedroom End Terrace.
- Stunning Coastal Views.
- Front Aspect Lounge.
- Large Reception/Dining Room.
- Modern Kitchen.
- Three Well Proportioned Bedrooms.
- Large Three Piece Family Bathroom.
- Yard With Storage Buildings.
- Garage And Driveway.
- No Upper Chain.







Harpers Property People - Dawn Barrett

07939 875 466

dawn@harpersproperty.com

<https://harpersproperty.com>

Harpers | POWERED BY **exp**™ UK
property people