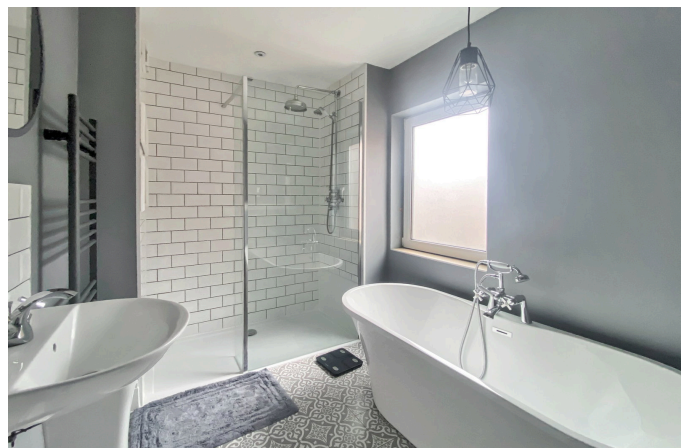


## Harlaxton Road, Grantham, Lincolnshire, NG31 7AJ

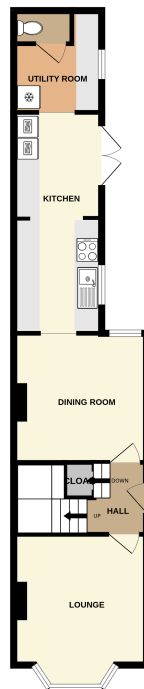
Offers Over £190,000

2 1 2



- (Please Quote RS0119)
- Welcoming Entrance Lobby With Under Stair Cloak Room/Storage Area
- Lounge & Separate Dining Room With Wood Burning Stove
- Utility Room & Downstairs Cloakrooms
- Enclosed Private Low Maintenance Rear Garden
- A Stunning Period Residence Easy Distance To Town Center & Train Station
- Extended Modern Fitted Galley Kitchen
- 2 Double Bedrooms & First Floor 4 Piece Contemporary Bathroom
- Gas Radiator Central Heating & Double Glazing
- High Decorative Finish & Specification Throughout

GROUND FLOOR



(Please Quote RS0119) This stunning period residence enjoys beautifully presented accommodation and a high specification throughout. Internally there is a welcoming entrance lobby with useful under stairs cloakroom, lounge, dining room, extended modern fitted kitchen, utility room, handy cloakroom with W.C. and wash hand basin.

The first floor offers a generous landing area with period style fireplace and internal doors lead to 2 double bedrooms and impressive bathroom which has a four piece suite including a feature roll top free standing bath.

The outdoor spaces further enhance this home with thoughtfully maintained front and rear gardens with gates providing access to a shared pathway which leads to the front entrance door. The enclosed rear garden offers a private retreat. Internal Viewing is essential in order to fully appreciate the specification and high decorative finish on offer.