



Jordan fishwick

Flat 204S X1 The Plaza, 1 Every Street, M4
£1,075 Per Calendar Month



The Property

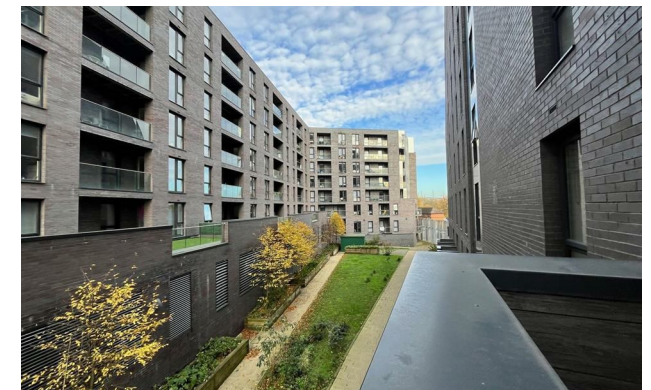
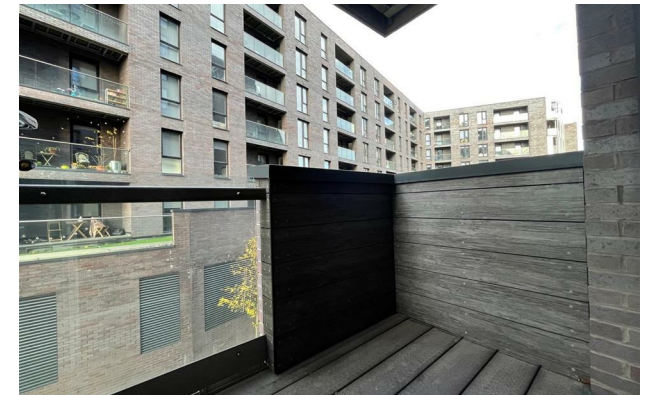
Available Start of April. Located within the luxury X1 The Plaza development this fully furnished, modern one bedroom apartment is on the second floor. The property comprises of entrance hallway, double bedroom, open plan kitchen & Living room with access to the balcony. On-site gym available for tenant use.

The property has easy access to the City Centre and to Piccadilly Train Station. EPC Rating B. Tax Band B. No Parking & No Pets.

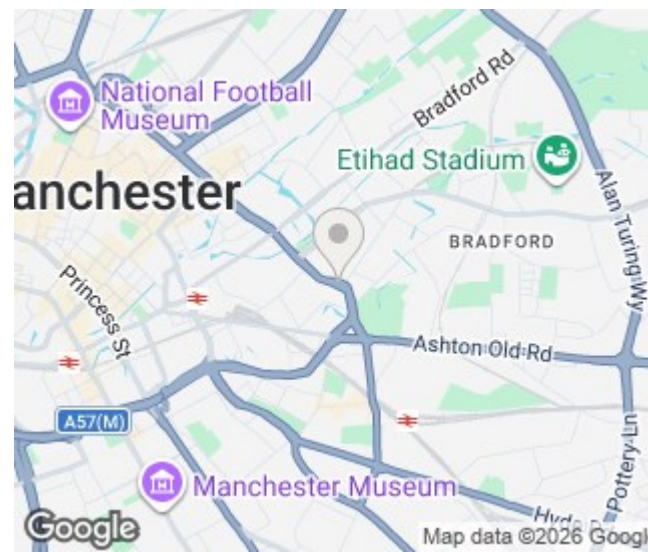
VIDEO/ PHOTO VIEWINGS ARE NOT ACCEPTED - PLEASE CALL TO BOOK A VIEWING

X1 The Plaza Manchester M4 7LT

£1,075 Per Calendar Month



- Available Start of April
- 2nd Floor - One Bed Apartment
- On site Gym
- Ancoats Location
- Tax Band B
- EPC Rating B
- Close to Transport Links
- Balcony
- No parking



Energy Efficiency Rating		
	Current	Potential
Very energy efficient - lower running costs		
(92 plus) A		
(81-91) B	84	84
(69-80) C		
(55-68) D		
(39-54) E		
(21-38) F		
(1-20) G		
Not energy efficient - higher running costs		
England & Wales	EU Directive 2002/91/EC	





These particulars are believed to be accurate but they are not guaranteed and do not form a contract. Neither Jordan Fishwick nor the vendor or lessor accept any responsibility in respect of these particulars, which are not intended to be statements or representations of fact and any intending purchaser or lessee must satisfy himself by inspection or otherwise as to the correctness of each of the statements contained in these particulars. Any floorplans on this brochure are for illustrative purposes only and are not necessarily to scale.

Offices at: Offices at Chorlton, Didsbury, Disley, Hale, Glossop, Macclesfield, Manchester Deansgate, Manchester Whitworth Street, New Mills, Sale, Wilmslow and Withington